

# MICRO SWITCH

FREEPORT ILLINOIS, U.S.A.  
A DIVISION OF HONEYWELL INC.  
FED. MFG. CODE 91929

# SWITCH - BASIC

CATALOG LISTING

V3-3057

CK-X3557

REPLACES X83370-V3

RELEASE NO. PR-14328

V3-3057

M

DRAWING NUMBER

X 2

ISSUE

CHECK

REVISIONS

A CO 74212  
D H D  
20 JAN 93

CHECK

14 NOV 85

CHECK

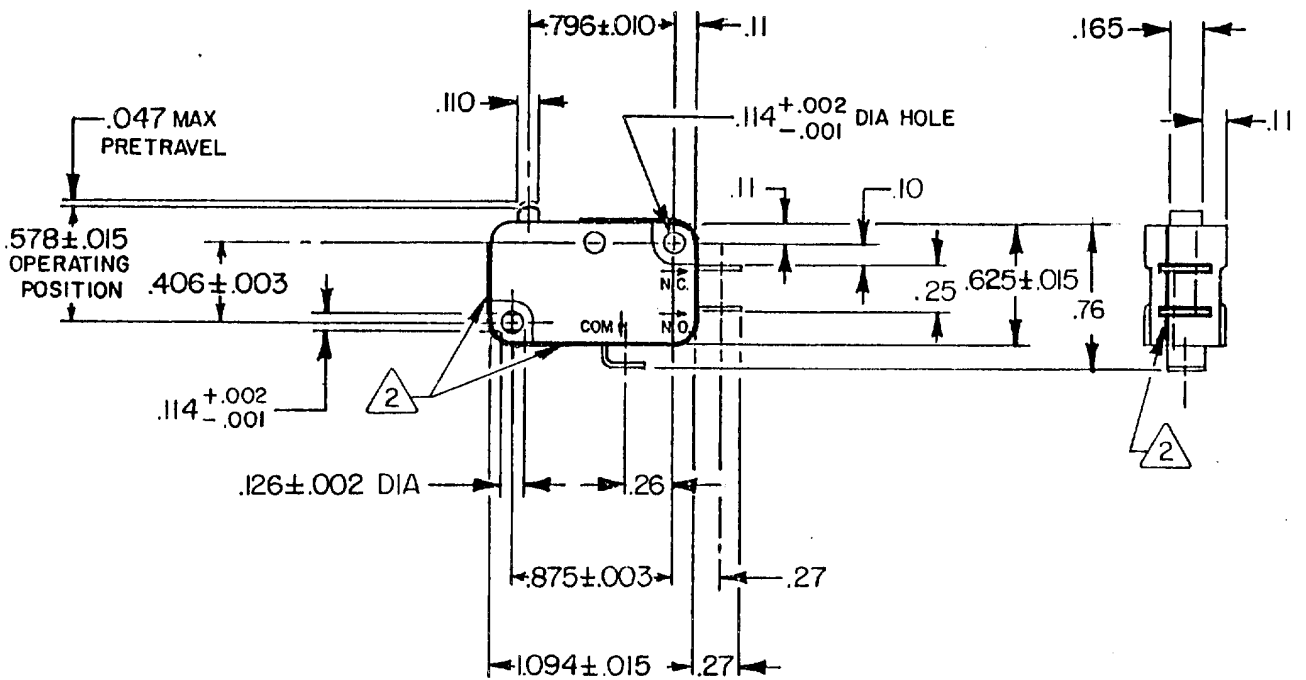
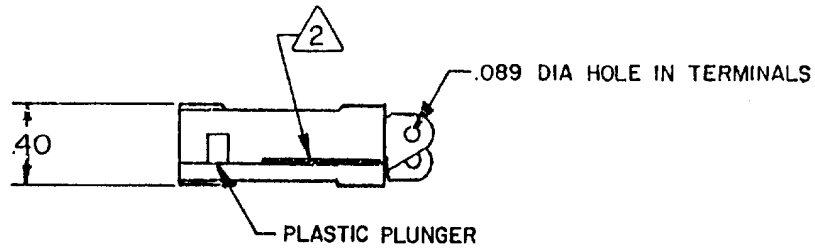
14 NOV 85

CHECK

14 NOV 85

CHECK

14 NOV 85

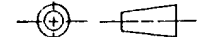


**NOTES**

- 1 - TERMINALS ARE PLATED FOR SOLDERING
- 2 - EPOXY APPLIED AROUND TERMINAL AREA AND JOINT BETWEEN CASE AND COVER. EPOXY ON TOP OF THE SWITCH TO BE WIPED OFF FLUSH WITH CASE & COVER

THIS DRAWING COVERS A PROPRIETARY ITEM AND IS THE PROPERTY OF MICRO SWITCH, A DIVISION OF HONEYWELL. THIS DRAWING IS NOT TO BE COPIED OR USED WITHOUT THE APPROVAL OF MICRO SWITCH.

THIRD ANGLE PROJECTION



CHARACTERISTICS	ELECTRICAL DATA	SCALE FULL	DO NOT SCALE PRINT
OPERATING FORCE — — — 150 GRAM MAX	CONTACT ARRANGEMENT S P D T	UNLESS OTHERWISE SPECIFIED TOLERANCES ARE	
RELEASE FORCE — — — — 15 GRAM MIN	L112	ONE PLACE (.0) ± .030	
DIFFERENTIAL TRAVEL — — — .002 — .010	10A 1/3 HP 125 OR 250 VAC	TWO PLACE (.00) ± .015	
OVERTRAVEL — — — — — 0.50 MIN	1/2A 125 VDC, 1/4A 250 VDC	THREE PLACE (.000) ± .005	
FREE POSITION — — — — — .625 MAX	4A 125 VAC "L"	ANGLES ±	
RELEASE TRAVEL — — — — — .010 MIN	RU Ⓢ	RAW MATERIAL — COMMERCIAL STANDARD	
		DIMENSIONS ARE IN INCHES AND ARE TO BE MET BEFORE PROTECTIVE COATINGS ARE APPLIED	
		MICRO SWITCH STANDARDS APPLY	
		WEIGHT .016 LB	

FO-52848-B  
DRAWN