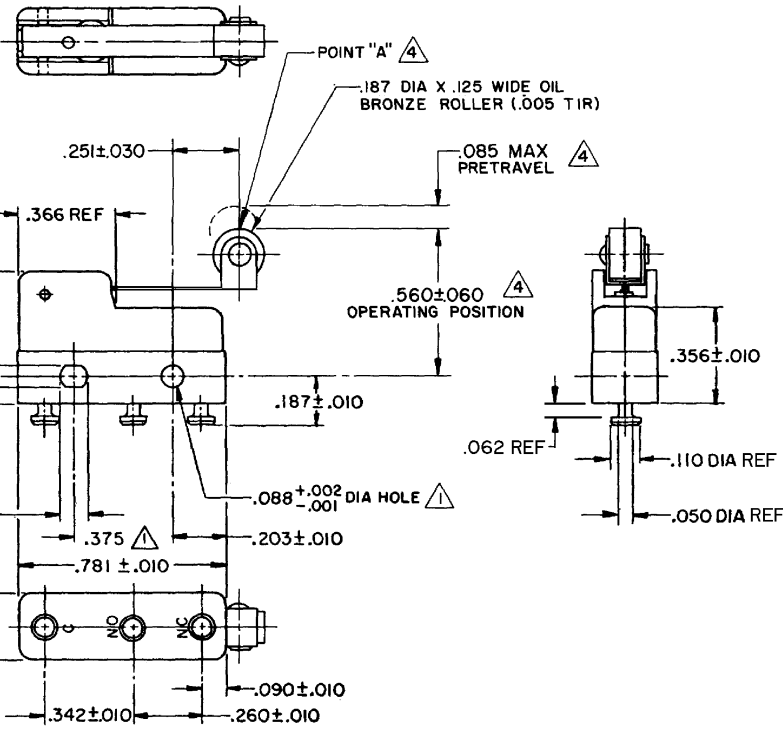


FO-55111-A

HONEYWELL
PART NUMBER
311SM6-T
PRODUCT CODE
TZA1350

REV	DOCUMENT	CHANGED BY	CHECK
7	0055407	KNR 19AUG09	CMH



NOTE -
 1 MOUNTING HOLES WILL ACCEPT PINS OR SCREWS OF .087 MAX DIA ON .375±.002 CENTERS
 2 SWITCH WILL WITHSTAND TEMPERATURE OF 250°F
 3 TERMINALS ARE PLATED FOR SOLDERING
 4 CHARACTERISTICS TAKEN AT POINT "A"

RELEASE NO. SR-11750
 REPLACES -

CHARACTERISTICS	4
OPERATING FORCE	40 GRAM MAX
RELEASE FORCE	7 GRAM MIN
DIFFERENTIAL TRAVEL	.019 MAX
OVERTRAVEL	.018 MIN

ELECTRICAL DATA	
CONTACT ARRANGEMENT S P D T	
30 VOLTS DC RATING	
INDUCTIVE	SEA LEVEL 50,000 FT
RESISTIVE	3 AMP 2.5 AMP 5 AMP 5 AMP
MAXIMUM INRUSH 24 AMP	
APPROVALS	KEMA CE 5A, 250V - TBS 1E4 UL CSA 5A, 250 VAC - UL 4A, 24VAC RES

DESIGN UNITS: INCH	
TOLERANCES UNLESS NOTED:	
NO PLACE	X ±
ONE PLACE	.X ±
TWO PLACE	.XX ±
THREE PLACE	.XXX ±
FOUR PLACE	.XXXX ±
ANGLES	±
THIRD ANGLE PROJECTION	

DRAWN	VK	20FEB 08
CHECK	RJ	20FEB 08
THIS DRAWING COVERS A PROPRIETARY ITEM AND IS THE PROPERTY OF HONEYWELL. THIS DRAWING IS NOT TO BE COPIED OR USED WITHOUT THE PERMISSION OF HONEYWELL.		
INTERPRET PER ANSI Y14.5M-1982 OTHER HONEYWELL ENGINEERING STANDARDS MAY APPLY		
RASTER		

Honeywell			
TITLE SWITCH - BASIC			
SIZE	TYPE	DRAWING NAME	REV
B	I	311SM6-T	7
SCALE	NONE	WEIGHT .006 LB MAX	SHEET 1 OF 1