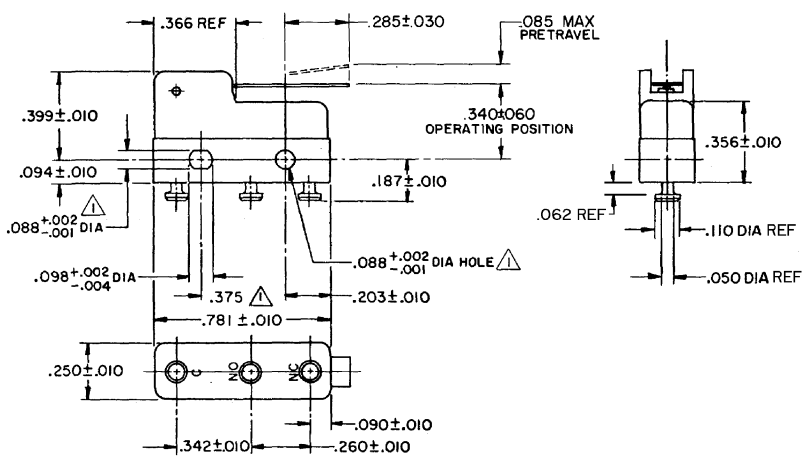
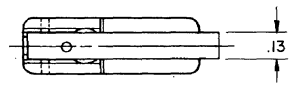


FO-55111-A

HONEYWELL
PART NUMBER
311SM1-T
PRODUCT CODE
TZA1100

REV	DOCUMENT	CHANGED BY	CHECK
5	0038113	PRS 12JUN08	BLR



NOTE -
 ▲ MOUNTING HOLES WILL ACCEPT PINS OR SCREWS OF .087 MAX DIA ON .375±.002 CENTERS
 2- SWITCH WILL WITHSTAND TEMPERATURE OF 250°F
 3- TERMINALS ARE PLATED FOR SOLDERING

RELEASE NO.
SR11750
REPLACES

CHARACTERISTICS	ELECTRICAL DATA	DESIGN UNITS: INCH TOLERANCES UNLESS NOTED:	DRAWN	VK	31 OCT 07	Honeywell
			CHECK	RJ	31 OCT 07	
OPERATING FORCE -- 40 GRAM MAX	CONTACT ARRANGEMENT S P D T	NO PLACE .X ± 0.030	THIS DRAWING COVERS A PROPRIETARY ITEM AND IS THE PROPERTY OF HONEYWELL. THIS DRAWING IS NOT TO BE COPIED OR USED WITHOUT THE PERMISSION OF HONEYWELL.			TITLE
RELEASE FORCE -- 7 GRAM MIN	30 VOLTS DC RATING	ONE PLACE .X ± 0.015				SWITCH - BASIC
DIFFERENTIAL TRAVEL -- .019 MAX	SEA LEVEL 50,000 FT	TWO PLACE .XX ± 0.005	INTERPRET PER ANSI Y14.5M-1982 OTHER HONEYWELL ENGINEERING STANDARDS MAY APPLY			SIZE
OVERTRAVEL -- .020 MIN	INDUCTIVE 3 AMP 2.5 AMP	THREE PLACE .XXX ±				B
	RESISTIVE 5 AMP 5 AMP	FOUR PLACE .XXXX ±	I			DRAWING NAME
	MAXIMUM INRUSH 24 AMP	ANGLES ±	RASTER			311SM1-T
APPROVALS	KEMA CE 5A, 250V ~ T85 1E4	THIRD ANGLE PROJECTION	SCALE			REV
	UL CSA 5A, 250 VAC ~		WEIGHT .006 LB MAX			5
			SHEET			1 OF 1