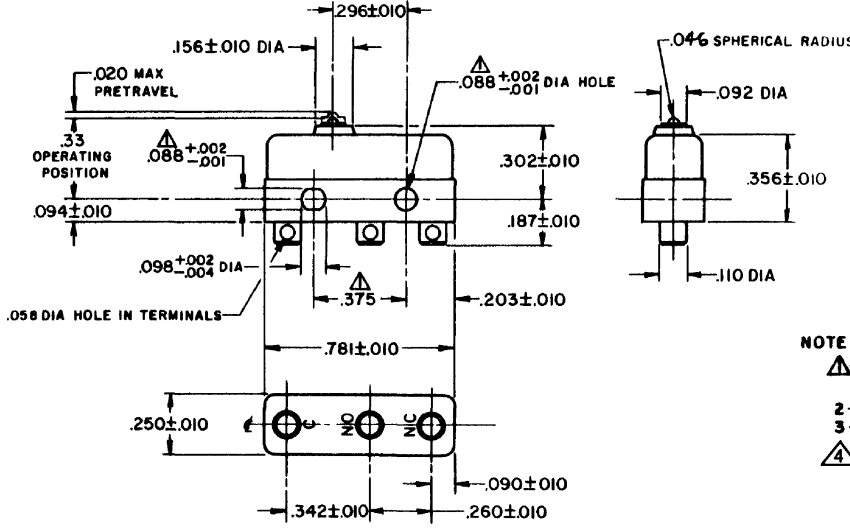
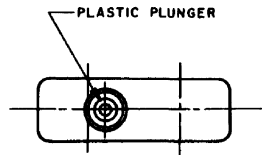


FO-55111-A

|                          |
|--------------------------|
| HONEYWELL<br>PART NUMBER |
| 11SM244                  |
| PRODUCT CODE<br>TWW4400  |
| JG-80518                 |
| FAA-PMA                  |

| REV | DOCUMENT | CHANGED BY  | CHECK |
|-----|----------|-------------|-------|
| 8   | 0038223  | SSK 17APR08 | BLR   |



**NOTE -**  
 MOUNTING HOLES WILL ACCEPT PINS OR SCREWS OF .087 MAX DIA ON .375 ± .002 CENTERS  
 2-TERMINALS ARE PLATED FOR SOLDERING  
 3-SWITCH WILL WITHSTAND TEMPERATURE OF 400° F  
 FOR MANUFACTURING DETAIL SEE ASSEMBLY DRAWING 11SM244 FOR FAA-PMA

RELEASE NO. SR - 9842  
 REPLACES -

| CHARACTERISTICS                    |
|------------------------------------|
| OPERATING FORCE - - - - 3 - 5 OZ   |
| RELEASE FORCE - - - - - 1 OZ MIN   |
| DIFFERENTIAL TRAVEL - - - .004 MAX |
| OVERTRAVEL - - - - - .005 MIN      |

| ELECTRICAL DATA                 |
|---------------------------------|
| KEMA CE 5A, 250V ~ T85 1E4      |
| UL CSA 5A, 250 VAC 0.3A 125 VDC |
| AVIATION FAA - PMA              |

| DESIGN UNITS: INCH       |
|--------------------------|
| TOLERANCES UNLESS NOTED: |
| NO PLACE .X ± 0.030      |
| ONE PLACE .XX ± 0.015    |
| TWO PLACE .XXX ± 0.005   |
| THREE PLACE .XXXX ±      |
| FOUR PLACE .XXXX ±       |
| ANGLES ±                 |
| THIRD ANGLE PROJECTION   |

|  |  |
|--|--|
| DRAWN VK 27 NOV 07   |  |
| CHECK RJ 27 NOV 07   |  |
| THIS DRAWING COVERS A PROPRIETARY ITEM AND IS THE PROPERTY OF HONEYWELL. THIS DRAWING IS NOT TO BE COPIED OR USED WITHOUT THE PERMISSION OF HONEYWELL. |  |
| INTERPRET PER ANSI Y14.5M-1982 OTHER HONEYWELL ENGINEERING STANDARDS MAY APPLY   |  |
| RASTER   |  |

|                      |                    |                      |       |
|----------------------|--------------------|----------------------|-------|
| <b>Honeywell</b>     |                    |                      |       |
| TITLE SWITCH - BASIC |                    |                      |       |
| SIZE B               | TYPE I             | DRAWING NAME 11SM244 | REV 8 |
| SCALE -              | WEIGHT .006 LB MAX | SHEET 1 OF 1         |       |

4

3

2

1