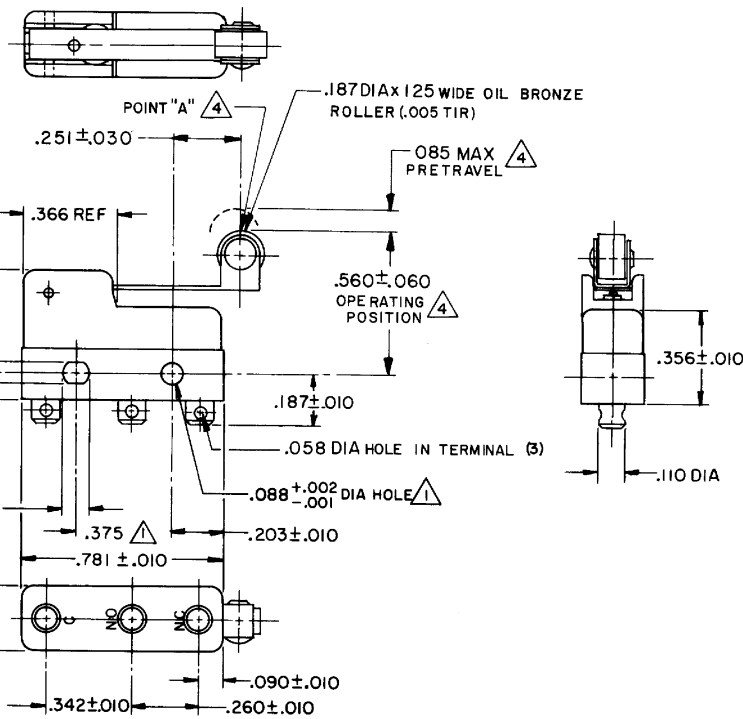


FO-55111-A

HONEYWELL
PART NUMBER
311SM6
PRODUCT CODE
TZA1308

REV	DOCUMENT	CHANGED BY	CHECK
5	0038113	PRS 12JUN08	BLR



NOTE -

- 1 MOUNTING HOLES WILL ACCEPT PINS OR SCREWS OF .087 MAX DIA ON .375 ± .002 CENTERS
- 2 SWITCH WILL WITHSTAND TEMPERATURE OF 250°F
- 3 TERMINALS ARE PLATED FOR SOLDERING
- 4 CHARACTERISTICS TAKEN AT POINT "A"

RELEASE NO. PR - 5606
REPLACES -

CHARACTERISTICS 4	OPERATING FORCE - - 40 GRAM MAX
	RELEASE FORCE - - - 7 GRAM MIN
	DIFFERENTIAL TRAVEL - - .019 MAX
	OVERTRAVEL - - - - .018 MIN

ELECTRICAL DATA	
CONTACT ARRANGEMENT S P D T	
30 VOLTS DC RATING	
SEA LEVEL	50,000 FT
INDUCTIVE	3 AMP 2.5 AMP
RESISTIVE	5 AMP 5 AMP
MAXIMUM INRUSH 24 AMP	
KEMA CE	5A, 250V ~ T85 1E4
UL CSA	5A, 250 VAC ~

DESIGN UNITS: INCH	TOLERANCES UNLESS NOTED:
NO PLACE	X ± 0.030
ONE PLACE	.X ± 0.015
TWO PLACE	.XX ± 0.005
THREE PLACE	.XXX ±
FOUR PLACE	.XXXX ±
ANGLES	±
THIRD ANGLE PROJECTION	

DRAWN	VK	05 NOV 07
CHECK	RJ	05 NOV 07
THIS DRAWING COVERS A PROPRIETARY ITEM AND IS THE PROPERTY OF HONEYWELL. THIS DRAWING IS NOT TO BE COPIED OR USED WITHOUT THE PERMISSION OF HONEYWELL.		
INTERPRET PER ANSI Y14.5M-1982 OTHER HONEYWELL ENGINEERING STANDARDS MAY APPLY		
RASTER		

Honeywell				
TITLE SWITCH - BASIC				
SIZE	TYPE	DRAWING NAME	311SM6	REV
B	I			5
SCALE	-	WEIGHT .006 LB MAX	SHEET 1 OF 1	

4

3

2

1