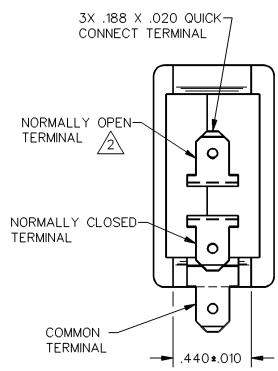
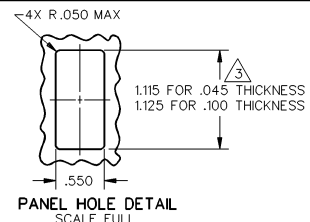
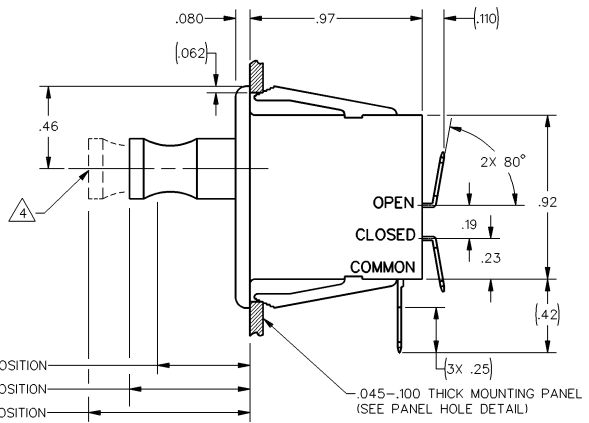
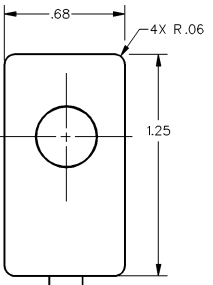
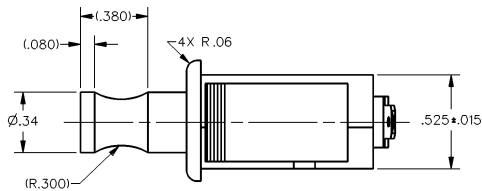


MICRO SWITCH
a Honeywell Division
FED. MFG. CODE 91929

SWITCH - BASIC

CATALOG LISTING
1DM401

CATALOG LISTING
1DM401
 ISSUE 5
 REVISIONS
 A 12/28/82
 B 03/22/83
 C 04/22/83
 D 05/22/83
 E 06/22/83
 F 07/22/83
 G 08/22/83
 H 09/22/83
 I 10/22/83
 J 11/22/83
 K 12/22/83
 L 01/22/84
 M 02/22/84
 N 03/22/84
 O 04/22/84
 P 05/22/84
 Q 06/22/84
 R 07/22/84
 S 08/22/84
 T 09/22/84
 U 10/22/84
 V 11/22/84
 W 12/22/84
 X 01/22/85
 Y 02/22/85
 Z 03/22/85
 DDN/CAD DRAWN
 DHD 20 JUL 92 CHECKED



.520 MAX FULL OVERTRAVEL POSITION
.700 ± .030 FREE POSITION
.930 MAX EXTENDED POSITION

-.045-.100 THICK MOUNTING PANEL
(SEE PANEL HOLE DETAIL)

THIS DRAWING COVERS A PROPRIETARY ITEM AND IS THE PROPERTY OF MICRO SWITCH, A DIVISION OF HONEYWELL. THIS DRAWING IS NOT TO BE COPIED OR USED WITHOUT THE APPROVAL OF MICRO SWITCH.

THIRD ANGLE PROJECTION
SCALE 2 TO 1
DO NOT SCALE PRINT

CHARACTERISTICS	ELECTRICAL DATA	UNLESS OTHERWISE SPECIFIED TOLERANCES ARE
OPERATING FORCE - - - - - 15 OZ MAX	CONTACT ARRANGEMENT S P D T	ONE PLACE (1.0) ± .030
	L181	TWO PLACE (.00) ± .015
	10A 1/2HP 125, 250 OR 277 VAC	THREE PLACE (.000) ± .005
	RUL	ANGLES ± 5°
	WEIGHT	

- NOTES
 1 - WHITE PLASTIC CASE AND PLUNGER
 2 - FLAG STYLE QUICK CONNECT RECEPTACLE REQUIRED FOR NORMALLY OPEN TERMINAL IF SWITCH IS WIRED BEFORE MOUNTING
 3 - NOMINAL CUTOUT DIMENSION FOR PANELS BETWEEN .045 AND .100 SHOULD BE INTERPOLATED BETWEEN 1.115 AND 1.125
 4 - PUSH TO OPERATE - MOMENTARY, PULL TO OPERATE - MAINTAINED

ANSI Y14.5M-1982 APPLIES