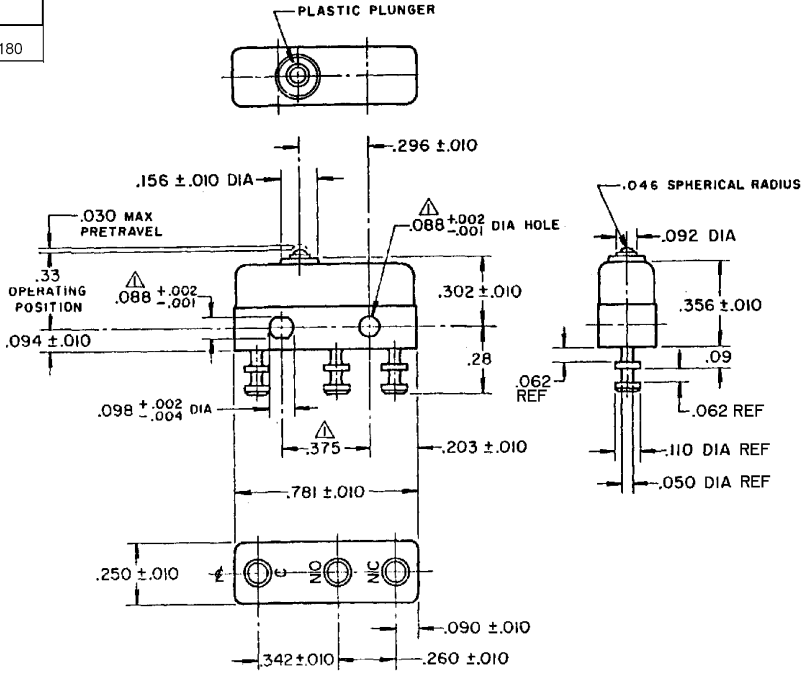


FO-55111-A

HONEYWELL
PART NUMBER
41SM1-T2
PRODUCT CODE
TYC0180

REV	DOCUMENT	CHANGED BY	CHECK
9	0038112	KVS 04JUN08	ASD



NOTES
 1- MOUNTING HOLES WILL ACCEPT PINS OR SCREWS OF .087 MAX DIA ON .375 ±.002 CENTERS
 2- TERMINALS ARE PLATED FOR SOLDERING
 3- SWITCH WILL WITHSTAND TEMPERATURE OF 250° F

RELEASE NO. SR - 11340
 REPLACES -

CHARACTERISTICS OPERATING FORCE - - - - 3-5 OZ RELEASE FORCE - - - - 1 OZ MIN DIFFERENTIAL TRAVEL - - - .004 MAX OVERTRAVEL - - - - - .005 MIN	ELECTRICAL DATA CONTACT ARRANGEMENT SPDT APPROVALS KEMA CE UL CSA 11A 250V ~ T85 1E4 5A 30 Vdc T85 1E4 11A 1/4 HP 125 250 VAC 5A 30 VDC 1/2 A 125 VDC BRAND L212	DESIGN UNITS: INCH TOLERANCES UNLESS NOTED: NO PLACE .X ± 0.030 ONE PLACE .XX ± 0.015 TWO PLACE .XXX ± 0.005 THREE PLACE .XXXX ± ANGLES ± THIRD ANGLE PROJECTION	DRAWN VK 24 OCT 07		TITLE	
			CHECK RJ 24 OCT 07		SWITCH - BASIC	
THIS DRAWING COVERS A PROPRIETARY ITEM AND IS THE PROPERTY OF HONEYWELL. THIS DRAWING IS NOT TO BE COPIED OR USED WITHOUT THE PERMISSION OF HONEYWELL. INTERPRET PER ANSI Y14.5M-1982 OTHER HONEYWELL ENGINEERING STANDARDS MAY APPLY			SIZE B	TYPE I	DRAWING NAME 41SM1-T2	REV 9
RASTER			SCALE -	WEIGHT .006 LB MAX	SHEET 1 OF 1	