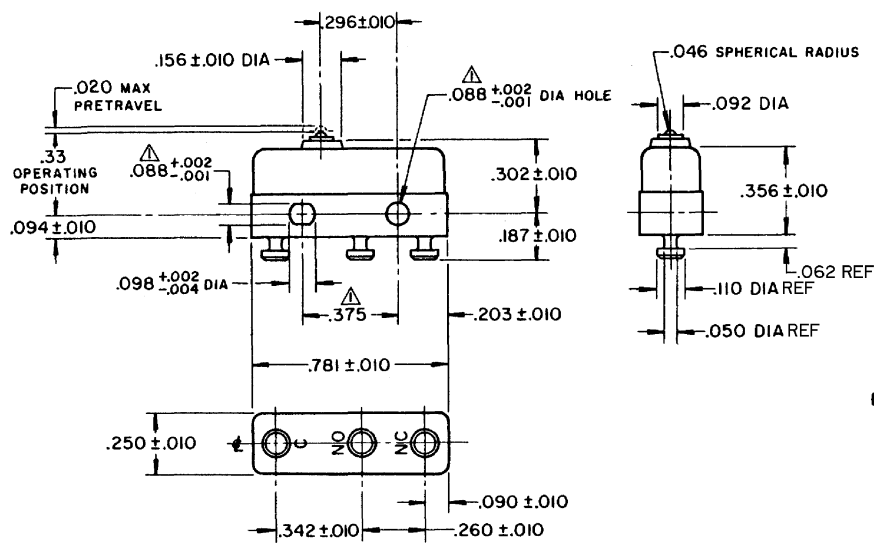
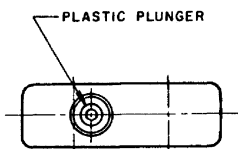


FO-55111-A

HONEYWELL
PART NUMBER
11SM1-T
PRODUCT CODE
TWT0160
JG-80180 (J)

REV	DOCUMENT	CHANGED BY	CHECK
12	0038090	VS 28APR08	BLR



NOTE -
 ▲-MOUNTING HOLES WILL ACCEPT PINS OR SCREWS OF .087 MAX DIA ON .375 ±.002 CENTERS
 2-TERMINALS ARE PLATED FOR SOLDERING

RELEASE NO.	-
REPLACES	-

CHARACTERISTICS OPERATING FORCE - - - - 3 - 5 OZ RELEASE FORCE - - - - 1 OZ MIN DIFFERENTIAL TRAVEL - - .004 MAX OVERTRAVEL - - - - .005 MIN	ELECTRICAL DATA CONTACT ARRANGEMENT S P D T 30 VOLTS DC RATING SEA LEVEL 50,000 FT INDUCTIVE 3 AMP 2.5 AMP RESISTIVE 5 AMP 5 AMP MAXIMUM INRUSH 24 AMP APPROVALS: KEMA CE 5A, 250V ~ T85 1E4 CE 5A, 250 VAC ~	DESIGN UNITS: INCH TOLERANCES UNLESS NOTED: NO PLACE .X ± ONE PLACE .XX ± TWO PLACE .XXX ± THREE PLACE .XXXX ± ANGLES ± THIRD ANGLE PROJECTION	DRAWN VK 29 NOV 07 CHECK RJ 29 NOV 07	Honeywell TITLE SWITCH - BASIC SIZE B TYPE I DRAWING NAME 11SM1-T REV 12 SCALE - WEIGHT .006 LB MAX SHEET 1 OF 1
			THIS DRAWING COVERS A PROPRIETARY ITEM AND IS THE PROPERTY OF HONEYWELL. THIS DRAWING IS NOT TO BE COPIED OR USED WITHOUT THE PERMISSION OF HONEYWELL. INTERPRET PER ANSI Y14.5M-1982 OTHER HONEYWELL ENGINEERING STANDARDS MAY APPLY RASTER	