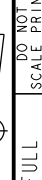


NOTES
1 - NO HOLES IN TERMINALS
2 - TERMINALS ARE PLATED
3 - SWITCH MATERIALS WILL WITHSTAND TEMPERATURE OF 300° F

ANSI Y14.5M-1982 APPLIES

THIS DRAWING COVERS A PROPRIETARY ITEM AND IS THE PROPERTY OF MICRO SWITCH, A DIVISION OF HONEYWELL. THIS DRAWING IS NOT TO BE COPIED OR USED WITHOUT THE APPROVAL OF MICRO SWITCH.

THIRD ANGLE PROJECTION



CHARACTERISTICS			
OPERATING FORCE-----	6-14 OZ		
RELEASE FORCE-----	4 OZ MIN		
DIFFERENTIAL TRAVEL-----	.006-.016		
OVERTRAVEL-----	.040 MIN		
FREE POSITION-----	.625 MAX		
RELEASE TRAVEL-----	.007 MIN		

ELECTRICAL DATA	
CONTACT ARRANGEMENT S P D T	
L83 15-1A 1/2HP 125, $\frac{250}{50}$ VAC 1/2A 125 VDC, 1/4A 250 VDC 5A 125 VAC "L"	

SCALE FULL

SCALE PRINT

UNLESS OTHERWISE SPECIFIED TOLERANCES ARE

ONE PLACE (.0)	± .030
TWO PLACE (.00)	± .015
THREE PLACE (.000)	± .005
ANGLES	+
WEIGHT	.015 LB

TSM	17 JUN 99	CHECK	SCALE PRINT	DO NOT SCALE PRINT
JAF	17 JUN 99	CHECK	SCALE FULL	SCALE PRINT
JAF	17 JUN 99	CHECK	SCALE FULL	SCALE PRINT
JAF	17 JUN 99	CHECK	SCALE FULL	SCALE PRINT
JAF	17 JUN 99	CHECK	SCALE FULL	SCALE PRINT
JAF	17 JUN 99	CHECK	SCALE FULL	SCALE PRINT
JAF	17 JUN 99	CHECK	SCALE FULL	SCALE PRINT
JAF	17 JUN 99	CHECK	SCALE FULL	SCALE PRINT
JAF	17 JUN 99	CHECK	SCALE FULL	SCALE PRINT
JAF	17 JUN 99	CHECK	SCALE FULL	SCALE PRINT
JAF	17 JUN 99	CHECK	SCALE FULL	SCALE PRINT
JAF	17 JUN 99	CHECK	SCALE FULL	SCALE PRINT
JAF	17 JUN 99	CHECK	SCALE FULL	SCALE PRINT
JAF	17 JUN 99	CHECK	SCALE FULL	SCALE PRINT
JAF	17 JUN 99	CHECK	SCALE FULL	SCALE PRINT

REPLACES	X99284-V3
RELEASE NO.	PR-21675
PAGE	1 OF 1
ISSUE	2

CATALOG LISTING
V3-22

