

MICRO SWITCH
a Honeywell Division

FED. MFG. CODE 91929

SWITCH-BASIC

CATALOG LISTING

V7-1S17D8-263

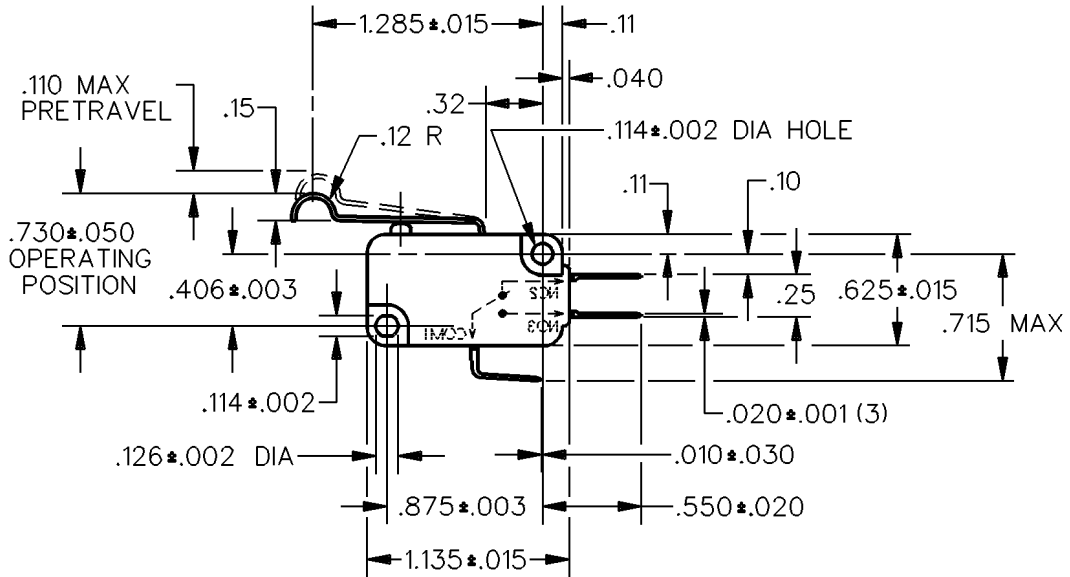
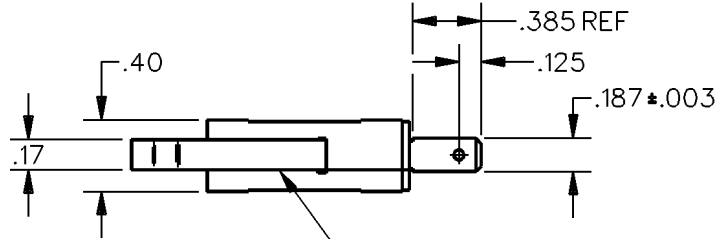
CW-B8655

CATALOG LISTING
V7-1S17D8-263
PAGE 1 OF 1
RELEASE NO. PR-18499

ISSUE
M
5

REVISIONS	
A	CO-69205 BAB 7 JAN 91
B	CO-76198 J A L 17 NOV 93
C	CO-77116 DCS 31 MAR 94
D	CO-93311 TSM 22 OCT 98

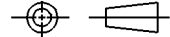
CHECK
22 AUG 90
WJC



NOTE
1 - IN INSPECTION, DO NOT BURN OUT - GOLD CONTACTS
2 - IN INSPECTION, DO NOT EXCEED 10 VDC, .1A RESISTIVE LOAD

THIS DRAWING COVERS A PROPRIETARY ITEM AND IS THE PROPERTY OF MICRO SWITCH, A DIVISION OF HONEYWELL. THIS DRAWING IS NOT TO BE COPIED OR USED WITHOUT THE APPROVAL OF MICRO SWITCH.

THIRD ANGLE PROJECTION



CHARACTERISTICS	ELECTRICAL DATA	SCALE	FULL	DO NOT SCALE PRINT
OPERATING FORCE -----90 GRAM MAX	CONTACT ARRANGEMENT S P D T	UNLESS OTHERWISE SPECIFIED TOLERANCES ARE		
RELEASE FORCE -----9 GRAM MIN	0.1A 125 VAC L142			
DIFFERENTIAL TRAVEL-----0.30 MAX		ONE PLACE (.0)		±.030
OVERTRAVEL -----0.75 MIN		TWO PLACE (.00)		±.015
RELEASE TRAVEL -----0.015 MIN		THREE PLACE (.000)		±.005
		ANGLES		±
		WEIGHT		



FORMTEK
DRAWN

W L S | 15 AUG 90 | CHECK