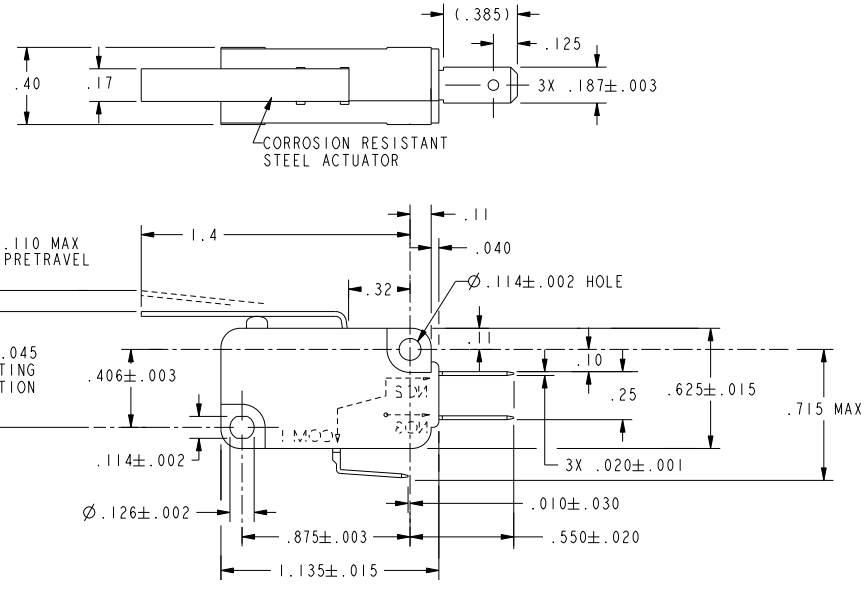


CW-B1600

REV	DOCUMENT	CHANGED BY	CHECK
6	0041135	VS 26 JUN 08	BLR



CHARACTERISTICS	
OPERATING FORCE	80 GRAMS MAX
RELEASE FORCE	8 GRAMS MIN
DIFFERENTIAL TRAVEL	.030 MAX
OVERTRAVEL	.090 MIN
RELEASE TRAVEL	.017 MIN

ELECTRICAL DATA	
CONTACT ARRANGEMENT S P D T	
L215	
15.1A 1/2HP 125, 250 OR 277 VAC	
1/2A 125 VDC	
1/4A 250 VDC; 5A 125 VAC *L*	

UNLESS OTHERWISE SPECIFIED TOLERANCES ARE:	
NO PLACE	X ±.040 ±1
ONE PLACE	.X ±.030 ±0,4
TWO PLACE	.XX ±.015 ±0,15
THREE PLACE	.XXX ±.005 ±
ANGLES	± — ±
RAW MATERIAL-COMMERCIAL STANDARD	

DRAWN	CSL	07MAY03
CHECK	SAV	07MAY03
THIS DRAWING COVERS A PROPRIETARY ITEM AND IS THE PROPERTY OF HONEYWELL. THIS DRAWING IS NOT TO BE COPIED OR USED WITHOUT THE PERMISSION OF HONEYWELL.		
DIMENSIONS ARE TO BE MET BEFORE PROTECTIVE COATINGS ARE APPLIED		
PTC 2D	ASME Y14.5M-1994	

<b>Honeywell</b>			
TITLE <b>SWITCH, BASIC</b>			
SIZE	DWG TYPE	DRAWING NAME	REV
<b>B</b>	<b>I</b>	<b>V7-1C17D8-022</b>	<b>6</b>
SCALE	2:1	WEIGHT	SHEET 1 OF 1

