

MICRO SWITCH
a Honeywell Division

FED. MFG. CODE 91929

SWITCH-BASIC

CATALOG LISTING

V7-1A27D8-207

CW-B0470

CATALOG LISTING
V7-1A27D8-207
RELEASE NO. PR-19258
REPLACES

ISSUE
M
2

REVISIONS
A CO-76440
JWB
30 NOV 93

CHECK

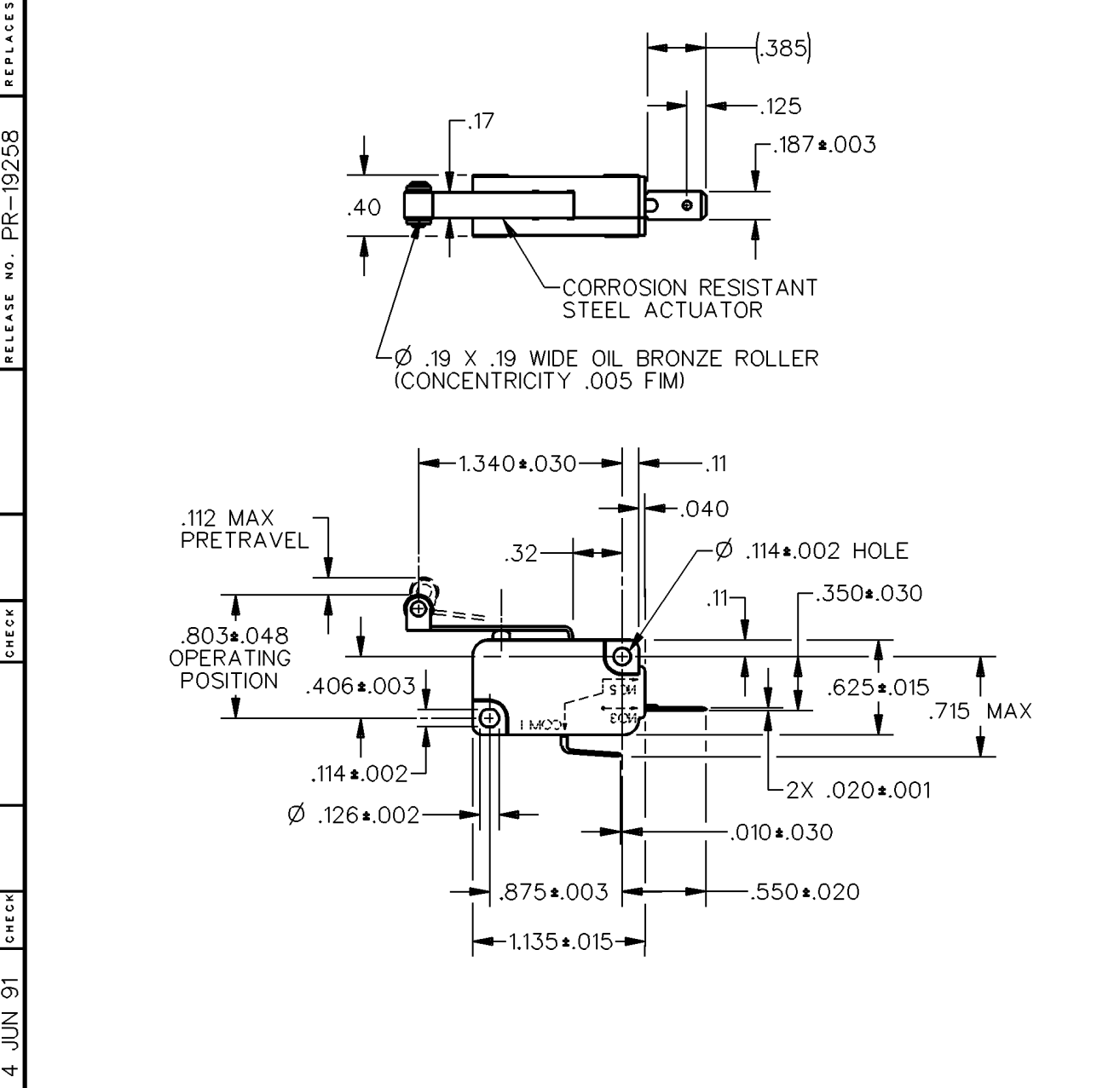
CHECK

4 JUN 91

D C S

91 MAY 91

J A L 24



ANSI Y14.5M-1982 APPLIES

THIS DRAWING COVERS A PROPRIETARY ITEM AND IS THE PROPERTY OF MICRO SWITCH, A DIVISION OF HONEYWELL. THIS DRAWING IS NOT TO BE COPIED OR USED WITHOUT THE APPROVAL OF MICRO SWITCH.

THIRD ANGLE PROJECTION

CHARACTERISTICS	ELECTRICAL DATA	SCALE FULL	DO NOT SCALE PRINT
OPERATING FORCE --- 86 GRAMS MAX	CONTACT ARRANGEMENT S P N O L162 5A 125, 250, 277 VAC 1/10HP 250 VAC	UNLESS OTHERWISE SPECIFIED TOLERANCES ARE	
RELEASE FORCE --- 9 GRAMS MIN		ONE PLACE (.0) ±.030	
DIFFERENTIAL TRAVEL --- .025 MAX		TWO PLACE (.00) ±.015	
OVERTRAVEL --- .064 MIN		THREE PLACE (.000) ±.005	
RELEASE TRAVEL --- .016 MIN		ANGLES ±	
		WEIGHT	

