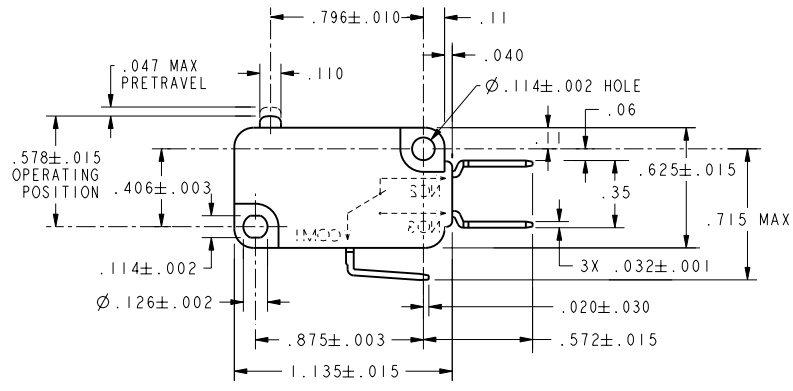
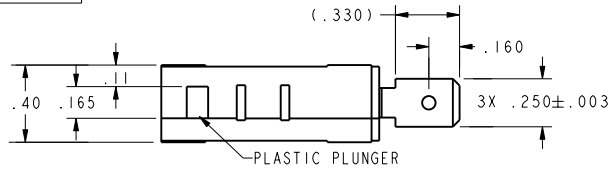


FO-50360-L

CW-B8667

REV	DOCUMENT	CHANGED BY	CHECK
8	202161	TSM 19JAN01	SAV
9	202466	TSM 1 MAR 01	SAV
10	207439	TSM 13FEB03	SAV



CHARACTERISTICS		ELECTRICAL DATA		UNLESS OTHERWISE SPECIFIED TOLERANCES ARE:		DRAWN	TSM	19JAN01	<div style="text-align: center;">Honeywell</div>				
OPERATING FORCE	----175 GRAMS MAX	CONTACT ARRANGEMENT	S P D T	NO PLACE	X ±.040 ±1	CHECK	SAV	19JAN01			TITLE <div style="text-align: center;">SWITCH, BASIC</div>		
RELEASE FORCE	-----20 GRAMS MIN	21A 1HP 125, 250, 277 VAC	ZHP 250, 277 VAC	ONE PLACE	.X ±.030 ±0,4	THIS DRAWING COVERS A PROPRIETARY ITEM AND IS THE PROPERTY OF HONEYWELL. THIS DRAWING IS NOT TO BE COPIED OR USED WITHOUT THE PERMISSION OF HONEYWELL.			SIZE	DWG TYPE			DRAWING NAME
DIFFERENTIAL TRAVEL	----.002-.010			TWO PLACE	.XX ±.015 ±0,15				DIMENSIONS ARE TO BE MET BEFORE PROTECTIVE COATINGS ARE APPLIED			B	I
OVERTRAVEL	-----0.050 MIN			THREE PLACE	.XXX ±.005 ±	PTC 2D ASME Y14.5M-1994						SCALE	2:1
FREE POSITION	-----0.625 MAX			ANGLES	± ±				THIRD ANGLE PROJECTION				
RELEASE TRAVEL	-----0.010 MIN			RAW MATERIAL-COMMERCIAL STANDARD		16 143 250 185 IES LL CE							