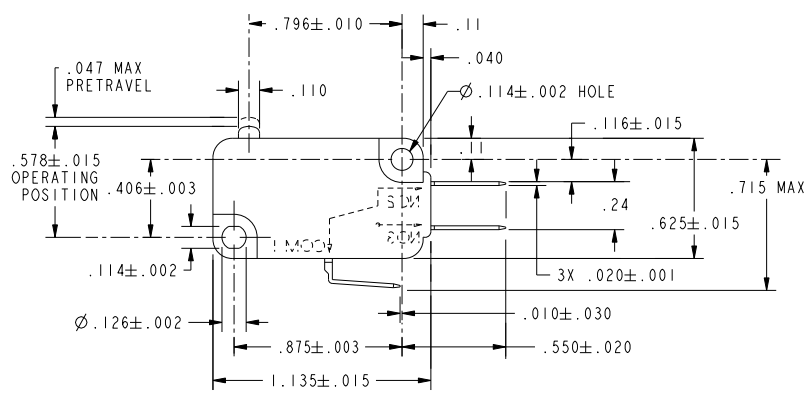
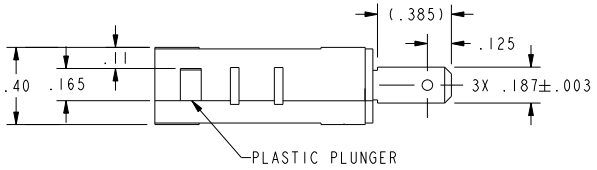


CW-B1590



CHARACTERISTICS	ELECTRICAL DATA	UNLESS OTHERWISE SPECIFIED TOLERANCES ARE: <input checked="" type="checkbox"/> US (INCH) CUSTOMARY <input type="checkbox"/> SI (MM) METRIC	DRAWN TSM 10JAN03	Honeywell
OPERATING FORCE ----150 GRAMS MAX	CONTACT ARRANGEMENT S P D T	NO PLACE X ±.040 ±1	CHECK SAV 10JAN03	
RELEASE FORCE ----- 25 GRAMS MIN	L215	ONE PLACE .X ±.030 ±0,4	THIS DRAWING COVERS A PROPRIETARY ITEM AND IS THE PROPERTY OF HONEYWELL. THIS DRAWING IS NOT TO BE COPIED OR USED WITHOUT THE PERMISSION OF HONEYWELL.	
DIFFERENTIAL TRAVEL ---- .002-.010	15.1A 1/2HP 125, 250 OR 277 VAC 1/2A 125 VDC	TWO PLACE .XX ±.015 ±0,15		
OVERTRAVEL ----- .050 MIN	1/4A 250 VDC; 5A 125 VAC "L"	THREE PLACE .XXX ±.005 ±	TITLE SWITCH, BASIC	
FREE POSITION----- .625 MAX		ANGLES ±	DRAWING NAME V7-1C17D8	
RELEASE TRAVEL----- .010 MIN		RAW MATERIAL-COMMERCIAL STANDARD	REV 5	
		THIRD ANGLE PROJECTION	SIZE DWG TYPE B I	
			DIMENSIONS ARE TO BE MET BEFORE PROTECTIVE COATINGS ARE APPLIED	
			SCALE 2:1 WEIGHT SHEET 1 OF 1	
			PTC 2D ASME Y14.5M-1994	