

MICRO SWITCH
a Honeywell Division

FED. MFG. CODE 91929

SWITCH - BASIC

CATALOG LISTING

V7-1B37D8

CW-B4729

CATALOG LISTING
V7-1B37D8
PAGE 1 OF 1
ISSUE M
3

REPLACES
RELEASE NO. PR-19239

CHECK

REVISIONS

A	CO-76103	LJF	5 OCT 93
B	CO-92478	TSM	22 APR 98

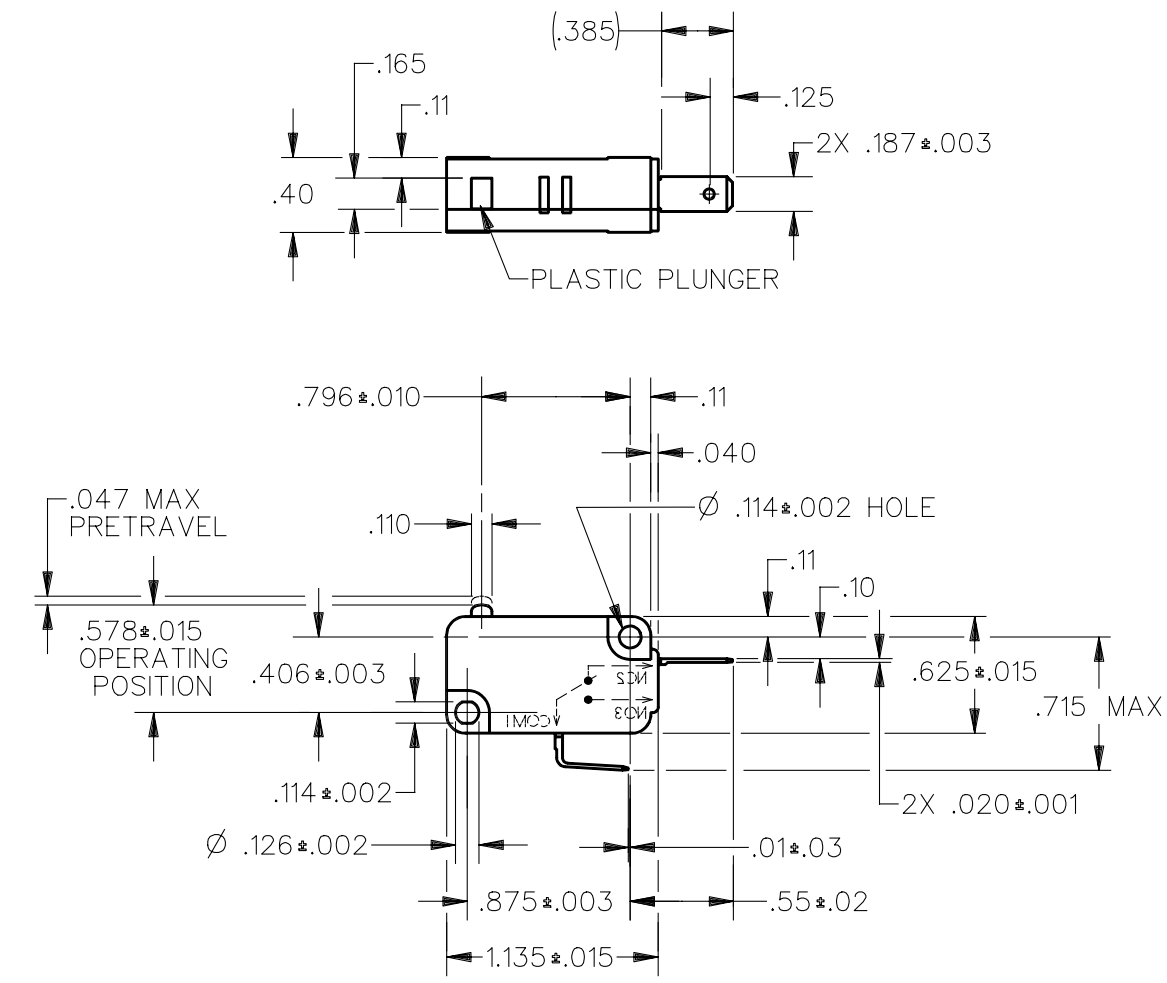
CHECK

5 JUN 91

D A W

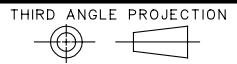
WJC 5 JUN 91

DDM/CAD
DRAWN



ANSI Y14.5M-1982 APPLIES

THIS DRAWING COVERS A PROPRIETARY ITEM AND IS THE PROPERTY OF MICRO SWITCH, A DIVISION OF HONEYWELL. THIS DRAWING IS NOT TO BE COPIED OR USED WITHOUT THE APPROVAL OF MICRO SWITCH.



CHARACTERISTICS	ELECTRICAL DATA	SCALE FULL	DO NOT SCALE PRINT
OPERATING FORCE --- 150 GRAMS MAX	CONTACT ARRANGEMENT S P N C	UNLESS OTHERWISE SPECIFIED TOLERANCES ARE ONE PLACE (.0) ±.030 TWO PLACE (.00) ±.015 THREE PLACE (.000) ±.005 ANGLES ± WEIGHT	
RELEASE FORCE --- 25 GRAMS MIN	L156 11A 1/3HP 125, 250 OR 277 VAC 1/2A 125 VDC, 1/4A 250 VDC 4A 125 VAC "L"		
DIFFERENTIAL TRAVEL --- .002-.010			
OVERTRAVEL --- .050 MIN			
FREE POSITION --- .625 MAX			
RELEASE TRAVEL --- .010 MIN			

