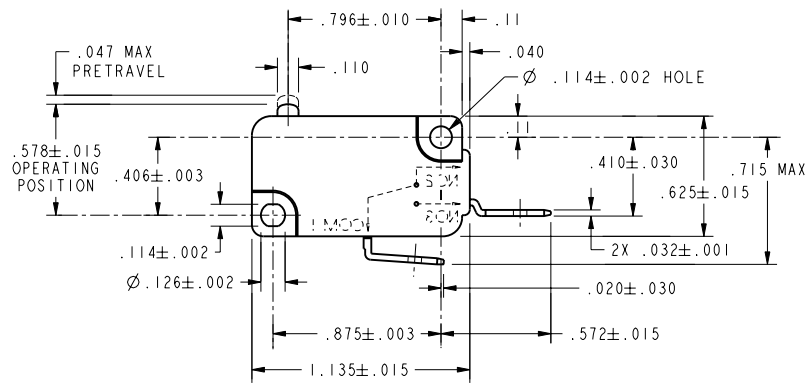
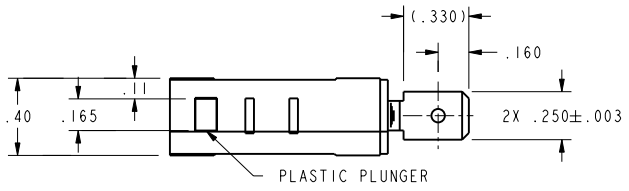


CW-B3077

REV	DOCUMENT	CHANGED BY	CHECK
5	207456	TSM 19FEB03	SAV



<b>CHARACTERISTICS</b> OPERATING FORCE-----75 GRAMS MAX RELEASE FORCE ----- 10 GRAM MIN DIFFERENTIAL TRAVEL ---- .002-.010 OVERTRAVEL ----- .050 MIN FREE POSITION-----.625 MAX RELEASE TRAVEL-----.010 MIN		<b>ELECTRICAL DATA</b> CONTACT ARRANGEMENT S P N O L156 11A 1/3HP 125, 250 OR 277 VAC 1/2A 125 VDC, 1/4A 250 VDC 4A 125 VAC "L" 		UNLESS OTHERWISE SPECIFIED TOLERANCES ARE: <input checked="" type="checkbox"/> US (INCH) CUSTOMARY <input type="checkbox"/> SI (MM) METRIC NO PLACE X ±.040 ±1 ONE PLACE .X ±.030 ±0,4 TWO PLACE .XX ±.015 ±0,15 THREE PLACE .XXX ±.005 ± ANGLES ± RAW MATERIAL-COMMERCIAL STANDARD THIRD ANGLE PROJECTION 		DRAWN TSM 19FEB03 CHECK SAV 19FEB03 THIS DRAWING COVERS A PROPRIETARY ITEM AND IS THE PROPERTY OF HONEYWELL. THIS DRAWING IS NOT TO BE COPIED OR USED WITHOUT THE PERMISSION OF HONEYWELL. DIMENSIONS ARE TO BE MET BEFORE PROTECTIVE COATINGS ARE APPLIED PTC 2D ASME Y14.5M-1994		<b>Honeywell</b> TITLE <b>SWITCH, BASIC</b> SIZE DWG TYPE DRAWING NAME REV <b>B I V7-2B27E9 5</b>		SCALE 2 : 1 WEIGHT SHEET 1 OF 1	
---	--	---	--	---	--	--	--	---	--	---------------------------------	--