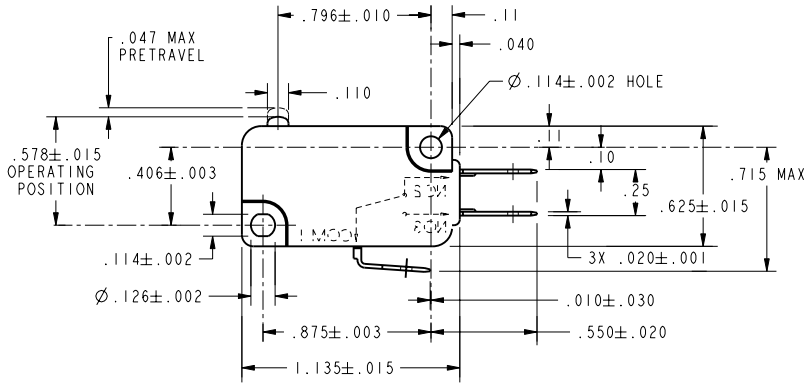
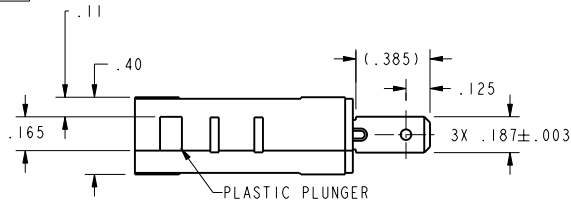


CW-C6114

| REV | DOCUMENT | CHANGED BY | CHECK |
|-----|----------|-------------|-------|
| 2 | 205068 | CSL 14MAR02 | SAV |



| CHARACTERISTICS | |
|--------------------------|-----------|
| OPERATING FORCE----- | 8 OZ MAX |
| RELEASE FORCE----- | 2 OZ MIN |
| DIFFERENTIAL TRAVEL----- | .006-.016 |
| OVERTRAVEL----- | .040 MIN |
| FREE POSITION----- | .625 MAX |
| RELEASE TRAVEL----- | .010 MIN |

| ELECTRICAL DATA | |
|---|--|
| CONTACT ARRANGEMENT S P D T | |
| L156 11A 1/3HP 125, 250 OR 277 VAC 1/2A 125 VDC, 1/4A 250 VDC 4A 125 VAC "L" | |

| UNLESS OTHERWISE SPECIFIED TOLERANCES ARE: | |
|--|-----------------|
| NO PLACE | X ±.040 ±1 |
| ONE PLACE | .X ±.030 ±0,4 |
| TWO PLACE | .XX ±.015 ±0,15 |
| THREE PLACE | .XXX ±.005 ± |
| ANGLES | ± ± |
| RAW MATERIAL-COMMERCIAL STANDARD | |
| THIRD ANGLE PROJECTION | |

| | | |
|--|------------------|---------|
| DRAWN | CSL | 14MAR02 |
| CHECK | SAV | 14MAR02 |
| THIS DRAWING COVERS A PROPRIETARY ITEM AND IS THE PROPERTY OF HONEYWELL. THIS DRAWING IS NOT TO BE COPIED OR USED WITHOUT THE PERMISSION OF HONEYWELL. | | |
| DIMENSIONS ARE TO BE MET BEFORE PROTECTIVE COATINGS ARE APPLIED | | |
| PTC 2D | ASME Y14.5M-1994 | |

| | | | |
|-------------------------------|----------|------------------|--------------|
| Honeywell | | | |
| TITLE SWITCH, BASIC | | | |
| SIZE | DWG TYPE | DRAWING NAME | REV |
| B | I | V7-7B17D8 | 2 |
| SCALE 2 : 1 | | WEIGHT | SHEET 1 OF 1 |