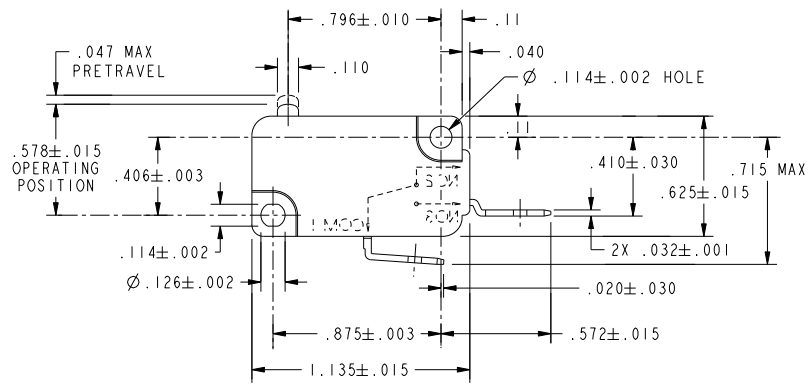
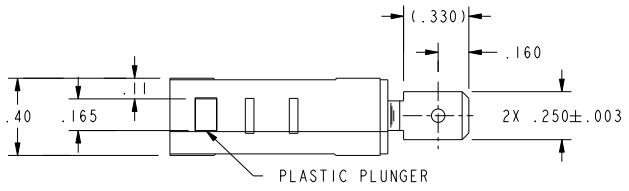


CW-B5545

REV	DOCUMENT	CHANGED BY	CHECK
8	0041144	SS 26 JUN 08	BLR



CHARACTERISTICS		ELECTRICAL DATA		UNLESS OTHERWISE SPECIFIED TOLERANCES ARE:		DRAWN	TSM	7FEB03	<div style="text-align: center;">Honeywell</div>	
OPERATING FORCE-----	150 GRAMS MAX	CONTACT ARRANGEMENT S P N O		NO PLACE	X	±.040	±1	CHECK		
RELEASE FORCE-----	25 GRAMS MIN	L215 15.1A 1/2HP 125, 250 OR 277 VAC 1/2A 125 VDC 1/4A 250 VDC; 5A 125 VAC "L"		ONE PLACE	.X	±.030	±0.4	THIS DRAWING COVERS A PROPRIETARY ITEM AND IS THE PROPERTY OF HONEYWELL. THIS DRAWING IS NOT TO BE COPIED OR USED WITHOUT THE PERMISSION OF HONEYWELL.		
DIFFERENTIAL TRAVEL-----	.002-.010			TWO PLACE	.XX	±.015	±0.15			
OVERTRAVEL-----	.050 MIN			THREE PLACE	.XXX	±.005	±			
FREE POSITION-----	.625 MAX			ANGLES		±	±			
RELEASE TRAVEL-----	.010 MIN			RAW MATERIAL-COMMERCIAL STANDARD		THIRD ANGLE PROJECTION				
						DIMENSIONS ARE TO BE MET BEFORE PROTECTIVE COATINGS ARE APPLIED		TITLE <div style="text-align: center;">SWITCH, BASIC</div>		
						PTC 2D		ASME Y14.5M-1994		SIZE DWG TYPE B I
								DRAWING NAME V7-1C27E9		REV 8
								SCALE 2:1		WEIGHT SHEET 1 OF 1