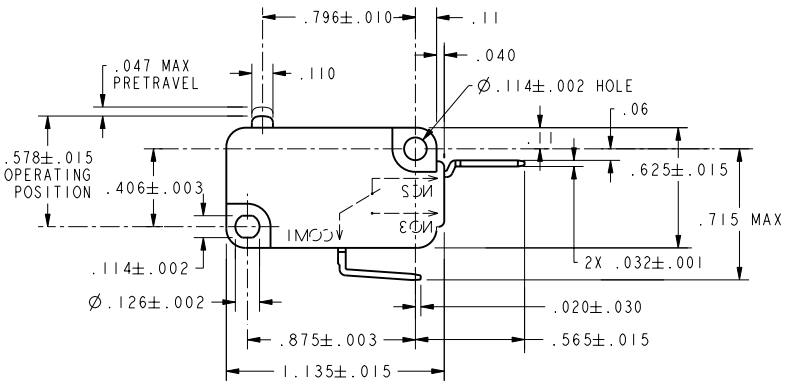
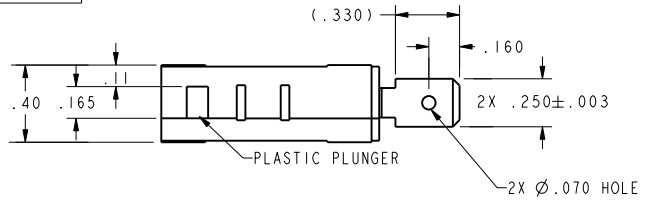


CW-B3219

REV	DOCUMENT	CHANGED BY	CHECK
3	204141	JLH 17OCT01	SAV



CHARACTERISTICS	
OPERATING FORCE	75 GRAMS MAX
RELEASE FORCE	10 GRAMS MIN
DIFFERENTIAL TRAVEL	.002-.010
OVERTRAVEL	.050 MIN
FREE POSITION	.625 MAX
RELEASE TRAVEL	.010 MIN

ELECTRICAL DATA	
CONTACT ARRANGEMENT S P N C	
L156	
11A 1/3HP 125, 250 OR 277 VAC	
1/2A 125 VDC, 1/4A 250 VDC	
4A 125 VAC "L"	

UNLESS OTHERWISE SPECIFIED TOLERANCES ARE:	
NO PLACE	X ±.040 ±1
ONE PLACE	.X ±.030 ±0.4
TWO PLACE	.XX ±.015 ±0.15
THREE PLACE	.XXX ±.005 ±
ANGLES	±
RAW MATERIAL-COMMERCIAL STANDARD	

THIRD ANGLE PROJECTION

DRAWN	JLH	17OCT01
CHECK	SAV	17OCT01
THIS DRAWING COVERS A PROPRIETARY ITEM AND IS THE PROPERTY OF HONEYWELL SENSING AND CONTROL. THIS DRAWING IS NOT TO BE COPIED OR USED WITHOUT THE PERMISSION OF HONEYWELL.		
DIMENSIONS ARE TO BE MET BEFORE PROTECTIVE COATINGS ARE APPLIED		
PTC 2D	ASME Y14.5M-1994	

<b>Honeywell</b> Sensing and Control		
TITLE <b>SWITCH, BASIC</b>		
SIZE	DWG TYPE	DRAWING NAME
<b>B</b>	<b>M</b>	<b>V7-2B37E9</b>
SCALE	2:1	WEIGHT
SHEET		1 OF 1