

# GDS Series Ultra Low Profile Micro Mini Side Actuated Detect Switch

**NEW!**

## Features/Benefits

- Ultra low profile package sits just 1.0 mm off PCB
- Design allows x or y axis actuation
- Low actuation force, 30 grams max.
- Pick and place compatible, available in tape & reel packaging
- RoHS compliant and compatible

## Typical Applications

- Consumer electronics
- Computers
- Medical devices
- Mobile Communication Devices
- ATCA and MicroTCA devices



**Advanced TCA®**

**μTCA®**

## Specifications

CONTACT RATING: 1 mA 5 VDC  
 MECHANICAL AND ELECTRICAL LIFE: 50,000 cycles min.  
 CONTACT RESISTANCE: 1 Ω max. initial.  
 INSULATION RESISTANCE: 100 M Ω min. between adjacent contacts.  
 OPERATING TEMPERATURE: -20°C to + 70°C  
 STORAGE TEMPERATURE: -30°C to + 80°C  
 PACKAGING: Tape & reel, 5000 pieces per reel  
 TRAVEL:  
 Pre-travel .3 mm min.  
 Overtravel: .9 mm min.  
 Total: 1.6 mm min.

## Materials

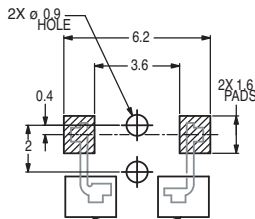
BASE: LCP  
 COVER: PA 46 (UL94V-0)  
 ACTUATOR: PA 46 (UL94V-0)  
 MOVABLE BLADE: Stainless Steel, Ag over Ni plating.  
 TERMINALS: Phosphor Bronze, Ag over Ni plating.

**NOTE:** Specifications and materials listed above are for switches with standard options. For information on specific and custom switches, consult Customer Service Center.

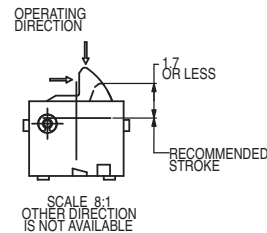
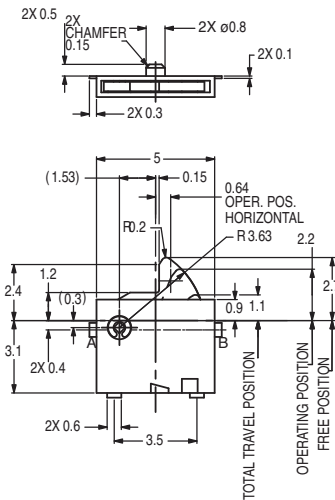
## Build-A-Switch

Complete part numbers for GDS Series are shown below.

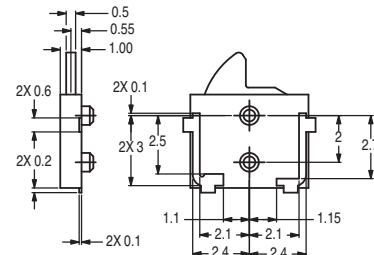
PART NUMBER	PACKAGING	SCHEMATIC
<b>GDS001</b>	TAPE & REEL 5,000 per reel	



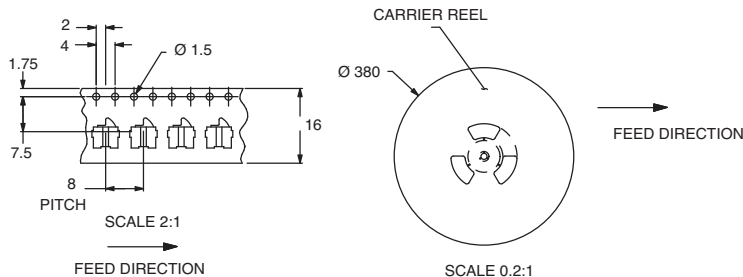
DO NOT SOLDER IN THIS AREA OF FRAME  
**PCB MOUNTING**



**GDS001**



## TAPE & REEL



Dimensions are shown: mm  
 Specifications and dimensions subject to change

[www.ck-components.com](http://www.ck-components.com)

