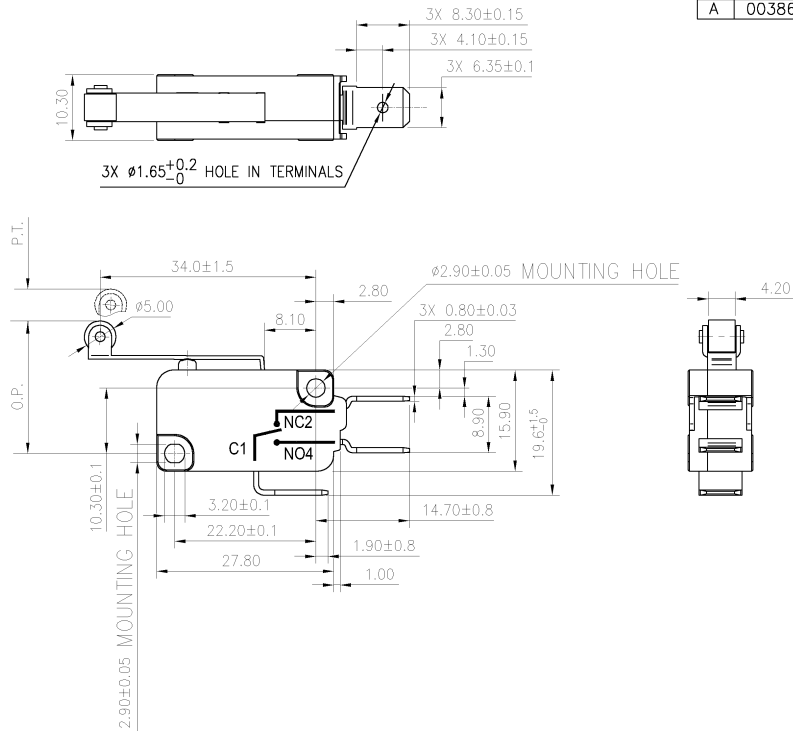


HONEYWELL PART NUMBER
V15T16-CZ300A06-K
PRODUCT CODE
CFW2059

REV	DOCUMENT	CHANGED BY	CHECK
A	0038670	VS 10APR08	BLR



NOTES:
1. TERMINALS WILL ACCEPT 6.35mm WIDE QUICK CONNECT RECEPTACLES AND COMPLY WITH EN61058-1 REQUIREMENTS.

CHARACTERISTICS OPERATING FORCE: 180gf. MAX. DIFFERENTIAL FORCE: RELEASE FORCE: 30gf. MIN. FREE POSITION: OPERATING POSITION: 20.6±1.6MM. PRE-TRAVEL: 3.2MM. MAX. DIFFERENTIAL TRAVEL: 1.2MM. MAX. OVER-TRAVEL: 1.3MM. MIN. FULL OVERTRAVEL FORCE:	ELECTRICAL DATA CONTACT ARRANGEMENT S.P.D.T 16(4)A 250V~ 25T125 μ 5E4 16A 1/2HP 125/250VAC	DESIGN UNITS: MM TOLERANCES UNLESS NOTED: NO PLACE X ± ± ONE PLACE .X ± ± TWO PLACE .XX ± ± 0.40 THREE PLACE .XXX ± ± ANGLES X ± ± 2° THIRD ANGLE PROJECTION 	DRAWN KSR 01APR08 CHECK RJ 01APR08	Honeywell TITLE SWITCH - BASIC	INTERPRET PER ASME Y14.5M-1994 OTHER HONEYWELL ENGINEERING STANDARDS MAY APPLY	SIZE B TYPE I CAGE CODE NTS DRAWING NAME V15T16-CZ300A06-K REV A
			AutoCAD SCALE NTS SHEET 1 OF 1			