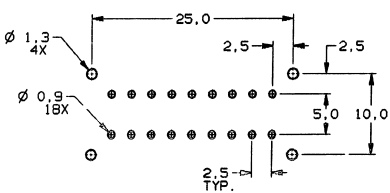
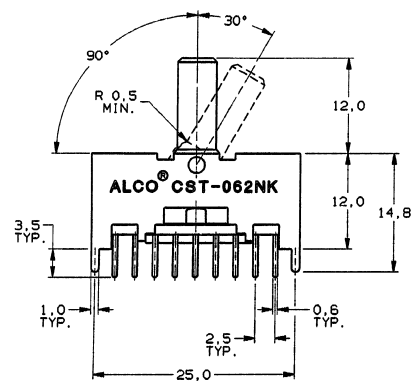
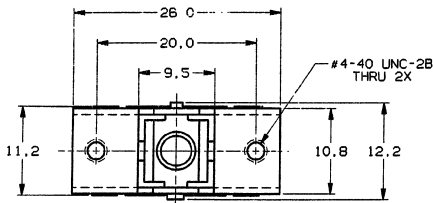
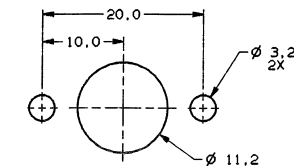
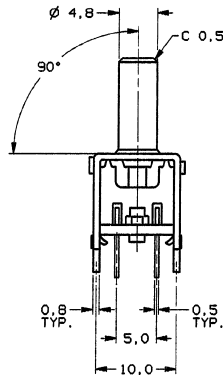


CONVERSION CHART	
MM	INCH
0.05	.002
0.12	.005
0.25	.010
0.45	.018
0.5	.020
0.6	.024
0.8	.031
0.9	.034
1.0	.039
1.3	.051
2.5	.098
3.2	.125
3.5	.138
4.8	.189
5.0	.197
9.0	.354
9.5	.374
10.0	.394
10.8	.425
11.2	.440
12.0	.472
12.2	.480
14.8	.582
20.0	.787
25.0	.984
26.0	1.024



**PC HOLE LAYOUT (TOP VIEW)**  
RECOMMENDED TOLERANCES ±0,05



**SUGGESTED PANEL CUTOUT**  
RECOMMENDED TOLERANCES ±0,12

**SPECIFICATIONS:**

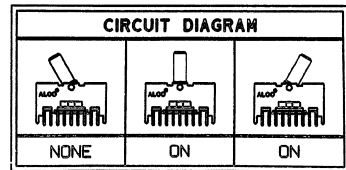
**MATERIALS:**  
 FRAME: STEEL, TIN-PLATED.  
 SLIDER: POLYCARBONATE.  
 LEVER: POLYESTER.  
 TERMINAL BOARD: PHENOLIC.  
 FIXED CONTACT TERMINAL: COPPER ALLOY, SILVER PLATE OVER NICKEL UNDERPLATE.  
 MOVING CONTACT: COPPER ALLOY, SILVER CLAD OVER NICKEL FLASH.  
 PRESSURE FINGER: POLYACETAL.  
 PIN: STEEL.  
 SPRING: STAINLESS STEEL.  
 FIXING POSITION: POLYESTER.  
 CAP: ALUMINUM.  
 TERMINAL SEAL: EPOXY.

**ELECTRICAL:**  
 CONTACT RATING: 0.3A @ 125 VAC (50-60 HZ),  
 0.2A @ 12 VDC.  
 INITIAL CONTACT RESISTANCE: 30 MILLIOHMS MAX.  
 INSULATION RESISTANCE: 100 MEGOHMS MIN. @ 500 VDC.  
 DIELECTRIC STRENGTH: 500 VAC FOR 1 MINUTE.  
 LIFE EXPECTANCY: 10,000 CYCLES.  
 CONTACT TIMING: NON-SHORTING.

**MECHANICAL:**  
 ACTUATION FORCE: 450 ±250 GRAMS.  
 ACTUATION TRAVEL: 30°

**ENVIRONMENTAL:**  
 OPERATING TEMPERATURE: -15°C TO +55°C, (-5°F TO +131°F).  
 STORAGE TEMPERATURE: -20°C TO +60°C, (-4°F TO +140°F).

**NOTES:** UNLESS OTHERWISE SPECIFIED  
 1. INTERPRET DRAWING PER ANSI Y14.5M 1982.



REV.	REVISIONS
0	INITIAL RELEASE
1	THEODORE
2	APP'D

OUTLINE DRAWING			
SPECIFICATIONS ARE SUBJECT TO CHANGES WITHOUT NOTICE			
 THIRD ANGLE PROJECTION	UNLESS OTHERWISE SPECIFIED DIMENSIONS ARE IN MILLIMETERS. DO NOT SCALE DRAWING.	ORIGINAL DATE OF DRAWING: 1-17-97	THIS IS A C.A.D. GENERATED DRAWING. DO NOT MAKE MANUAL REVISIONS TO THIS.
TOLERANCES (EXCEPT AS NOTED): ANGULAR = ±1° LINEAR = ±0,25	FILE NAME: 81002 SHEET NO.: 1 OF 1	DRAWN: C. THEODORE DATE: 11-17-97	 452 JOHN DIERCKX BLVD. ATLANTA, GA 30328 TEL: 404-525-1100 FAX: 404-525-1101
ALL RIGHTS RESERVED No reproduction or translation in any form or by any means is permitted without the expressed written consent of ALCO, Inc.	SEE SPECIFICATIONS	CHECKED: [Signature] DATE: 1-21-97	TITLE: <b>OUTLINE DRAWING</b> TOGGLE SWITCH, CST062NK 6P2T, PC TERMINALS
APPROVED: [Signature] DATE: 1-21-97	CODE FORM: 91506 DWG. SIZE: C	DNG. NO.: 81002	REV.: 0
NEXT ASSY:	SCALE:	PRODUCT CODE:	SHEET 1 OF 1

Property of ALCO Electronics Corporation December, 2000  
 Control No. 420007-7 Rev. 10-11-97-1