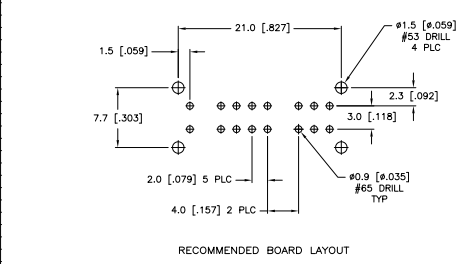
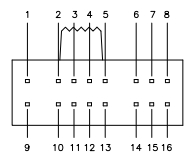
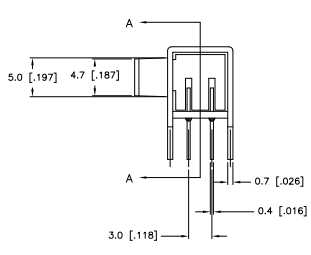
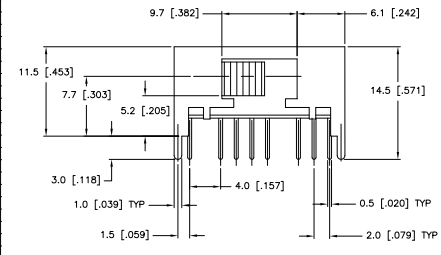
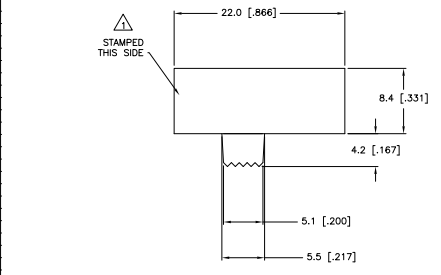
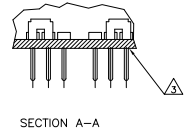


THIS DRAWING IS UNPUBLISHED
 ALL RIGHTS RESERVED
 © 2008 Tyco Electronics Corporation

REV	DATE	DESCRIPTION	BY	CHKD
AD	00			
A1		REVISED PER ECO-10-008611		



RECOMMENDED BOARD LAYOUT



SPECIFICATIONS
 MAKE-BEFORE-BREAK

MATERIALS:
 ACTUATOR— POM, UL94HB BLACK
 TERMINAL BOARD— PHENOLIC LAMINATED SHEET, UL94HB, NATURAL
 FRAME— STEEL, NICKEL PLATE
 TERMINAL/FIXED CONTACT— COPPER ALLOY, GOLD OR SILVER OVER NICKEL PLATE
 MOVING CONTACT— COPPER ALLOY, GOLD OR SILVER OVER NICKEL PLATE
 DETENT BALL— STEEL
 COIL SPRING— GALVANIZED SPRING WIRE
 SEAL— EPOXY

ELECTRICAL:
 CONTACT RATING— 4VA@20VDC OR PEAK AC (GOLD); 300mA@125V AC (SILVER)
 INITIAL CONTACT RESISTANCE— 30 milliohm max.
 FINAL CONTACT RESISTANCE— 100 milliohm max. (AFTER TEST)
 INSULATION RESISTANCE— 1,000 Megohms min.
 DIELECTRIC STRENGTH— 500V RMS@SEA LEVEL
 LIFE EXPECTANCY— 15,000 CYCLES MIN.

MECHANICAL:
 ACTUATION FORCE— 600+/-300 GRAMS
 TRAVEL— 2.0 +/- .50 (0.079 +/- .020)

ENVIRONMENTAL:
 OPERATING TEMPERATURE— -20 TO +85 DEGREES C
 STORAGE TEMPERATURE— -40 TO +100 DEGREES C
 RESISTANCE TO SOLDER HEAT PER 109-202, CONDITION B
 SOLDERABILITY PER EIA-364-52, CLASS 2, CATEGORY 1, 95% MIN COVERAGE

NOTES:

1. COUNTRY OF ORIGIN AND TE LOGO LOCATED APPROXIMATELY AS SHOWN
2. ALL MATERIALS AND FINISHES SHALL COMPLY WITH EU DIRECTIVE 2002/95/EC OF 27JAN2003 (ROHS)
3. ANTI SOLDER WICK SEAL AT TERMINAL TO BOARD INTERFACE
4. ALL PERFORMANCE TESTING WAS DONE IN ACCORDANCE TO TYCO SPECIFICATION 102-2469

TE PART NO.	T&B PART NO.	PLATING	TERMINALS CONNECTED WHEN SLIDE IS IN POSITION SHOWN
1825268-2	MSS4300R04	GOLD	1 TO 2, 3 TO 4, 5 TO 6, 7 TO 8, 9 TO 10, 11 TO 12, 13 TO 14, 15 TO 16
1825268-1	MSS4300R04	SILVER	1 TO 2, 3 TO 4, 5 TO 6, 7 TO 8, 9 TO 10, 11 TO 12, 13 TO 14, 15 TO 16

DESCRIPTION	QUANTITY	REVISION	DATE	BY	CHKD
SLIDE SWITCH, MSS 4300R SERIES <td></td> <td></td> <td></td> <td></td> <td></td>					
REVISED PER ECO-10-008611					