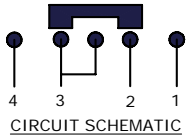
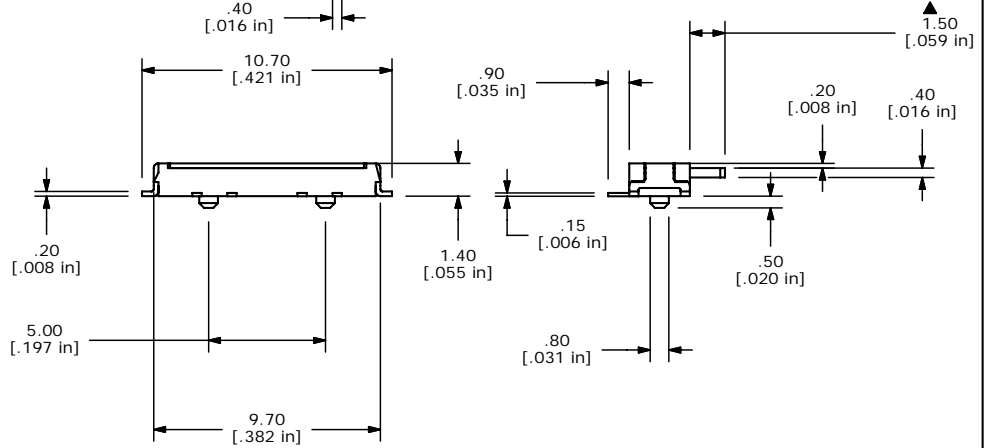
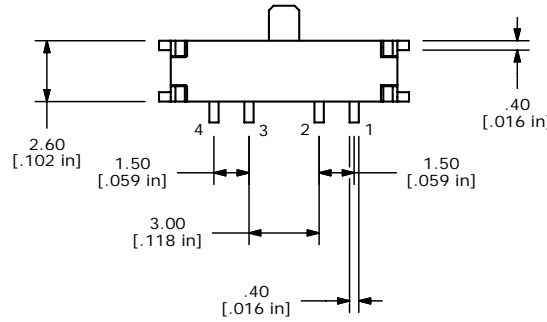
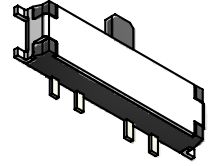


PCB LAYOUT



CIRCUIT SCHEMATIC



- NOTES:
1. ALL DIMENSIONS IN MM [INCH]
 2. GENERAL TOLERANCE: X.X=±0.4
X.XX=±0.25
 3. TERMINAL NUMBERS FOR REF ONLY
 4. RATING: CURRENT: 300mA
VOLTAGE: 4 VDC
 5. OPERATING LIFE: 10,000 MAKE-AND-BREAK CYCLES
 6. INSULATION RESISTANCE: 100VDC, 100M OHM. MIN.
 - ▲ 7. OPERATING FORCE: 200gf ± 150 TO CENTER POSITION
150gf ± 100 FROM CENTER POSITION
 8. OPERATING TEMP.: -10°C to 60°C
 9. TRAVEL: 1.5 ± 0.1mm EACH POSITION
 10. CONTACT RESISTANCE: 70 m OHM. MAX.
 11. ▲ DENOTES CRITICAL PARAMETER.
 12. PACKAGING: TAPE & REEL, 3000 PIECES PER REEL.
 12. 2002/95/EC (ROHS) COMPLIANT



B	18168	dim was 0.09mm	7/1/08	rc
A	18099	NEW RELEASE	4/07/08	RC
REV	PCR NO	DESCRIPTION	DATE	BY

TITLE EG1300B				
SCALE	DATE	DR	DWG	REV
2=1	4/7/2008	rc	D041221	B

THE INFORMATION CONTAINED IN THIS DOCUMENT IS PROPRIETARY TO E-SWITCH AND IS NOT TO BE COPIED OR TRANSFERRED