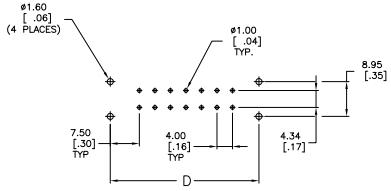
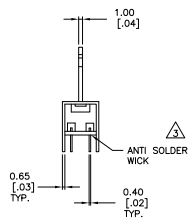
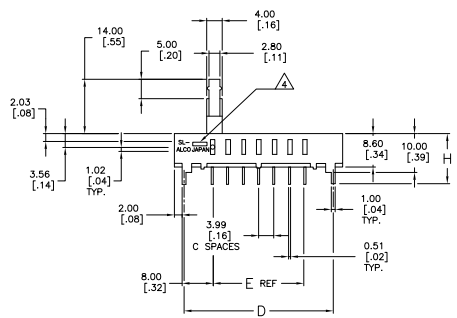
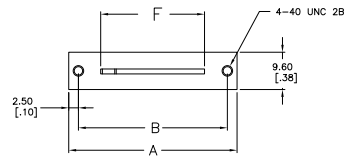


REV	DATE	DESCRIPTION	BY	CHK	APP
AD	00				
CT		REVISED PER EDD-11-004820	11MR11	RK	HMR



HOLE LAYOUT

SPECIFICATIONS: BREAK-BEFORE-MAKE

MATERIALS:
 FRAME - STEEL, TIN PLATE
 ACTUATOR - STEEL, ZINC PLATE
 SLIDER - POLYCARBONATE UL94V-2, BLACK
 MOVING CONTACT - COPPER ALLOY/SILVER PLATE
 FIXED CONTACT/TERMINAL - COPPER ALLOY, SILVER PLATE
 TERMINAL BOARD - PHENOLIC UL94HB, NATURAL
 TERMINAL SEAL - EPOXY

ELECTRICAL:
 CONTACT RATING - 250 MILLIAMPS@125V AC, 150 MILLIAMPS@12V DC
 INITIAL CONTACT RESISTANCE - 30 MILLIOHMS MAX
 INSULATION RESISTANCE - 500 MEGOHMS MIN
 DIELECTRIC STRENGTH - 500 VOLTS RMS AT SEA LEVEL
 LIFE EXPECTANCY - 10,000 CYCLES MIN, NO LOAD & 6,000 MIN AT RATED CURRENT

MECHANICAL:
 ACTIVATION FORCE - 100-300 GRAMS
 TRAVEL - .157

ENVIRONMENTAL:
 OPERATING TEMPERATURE : -10 TO +60°C
 STORAGE TEMPERATURE - -10 TO +80°C
 RESISTANCE TO SOLDER HEAT - 260°C FOR 10 SEC PER 109-202, CONDITION B
 SOLDERABILITY PER EIA-364-56A, PROCEDURE 3, CONDITION B

- FOR FUNCTION DIAGRAM SEE SHEET 2 OF 2.
- ALL MATERIALS AND FINISHES SHALL COMPLY WITH EU DIRECTIVE 2002/95/EC OF 27JAN2003 (ROHS)
- ANTI SOLDER WICK SEAL (SHOW THIS AT THE TERMINAL TO BOARD INTERFACE).
- IF THE SWITCH IS FROM TAIWAN, "ALCO TWN" WILL APPEAR ON THE LEFT SIDE OF THE SWITCH REPLACING THE "ALCO JAPAN" STAMP AND THE SWITCH MODEL NO. WILL APPEAR ON THE RIGHT SIDE OF THE SWITCH.
- ALL PERFORMANCE SPECIFICATIONS WERE TESTED IN ACCORDANCE WITH JIS-C-5441 UNLESS OTHERWISE STATED.

12.90 [508]	40.00 [1575]	36 [1.413]	51.00 [2020]	9 SPACE	51.00 [2020]	56.00 [2210]	10 PDS	SL10004	1825073-7
13.20 [520]	32.00 [1260]	28.00 [1102]	43.00 [1700]	7 SPACE	43.00 [1700]	48.00 [1890]	8 PDS	SL88004	1825073-6
12.90 [508]	28.00 [1102]	24.00 [945]	39.00 [1540]	6 SPACE	39.00 [1540]	44.00 [1740]	7 PDS	SL77004	1825073-5
12.90 [508]	24.00 [945]	20.00 [787]	35.00 [1380]	5 SPACE	35.00 [1380]	40.00 [1580]	6 PDS	SL66004	1825073-4
12.90 [508]	20.00 [787]	16.00 [630]	31.00 [1220]	4 SPACE	31.00 [1220]	36.00 [1420]	5 PDS	SL55004	1825073-3
12.90 [508]	12.00 [472]	8.00 [315]	23.00 [910]	2 SPACE	23.00 [910]	28.00 [1110]	3 PDS	SL33004	1825073-2
12.90 [508]	8.00 [315]	4.00 [1575]	19.00 [750]	1 SPACE	19.00 [750]	24.00 [950]	2 PDS	SL22004	1825073-1

DIM. H	DIM. F	DIM. E	DIM. D	DIM. C	DIM. B	DIM. A	POS.	ALCO P/N	PART NO.

THIS DRAWING IS A CONTROLLED DOCUMENT. **TE Connectivity**

TE Connectivity
 SLIDE SWITCH, SL SERIES

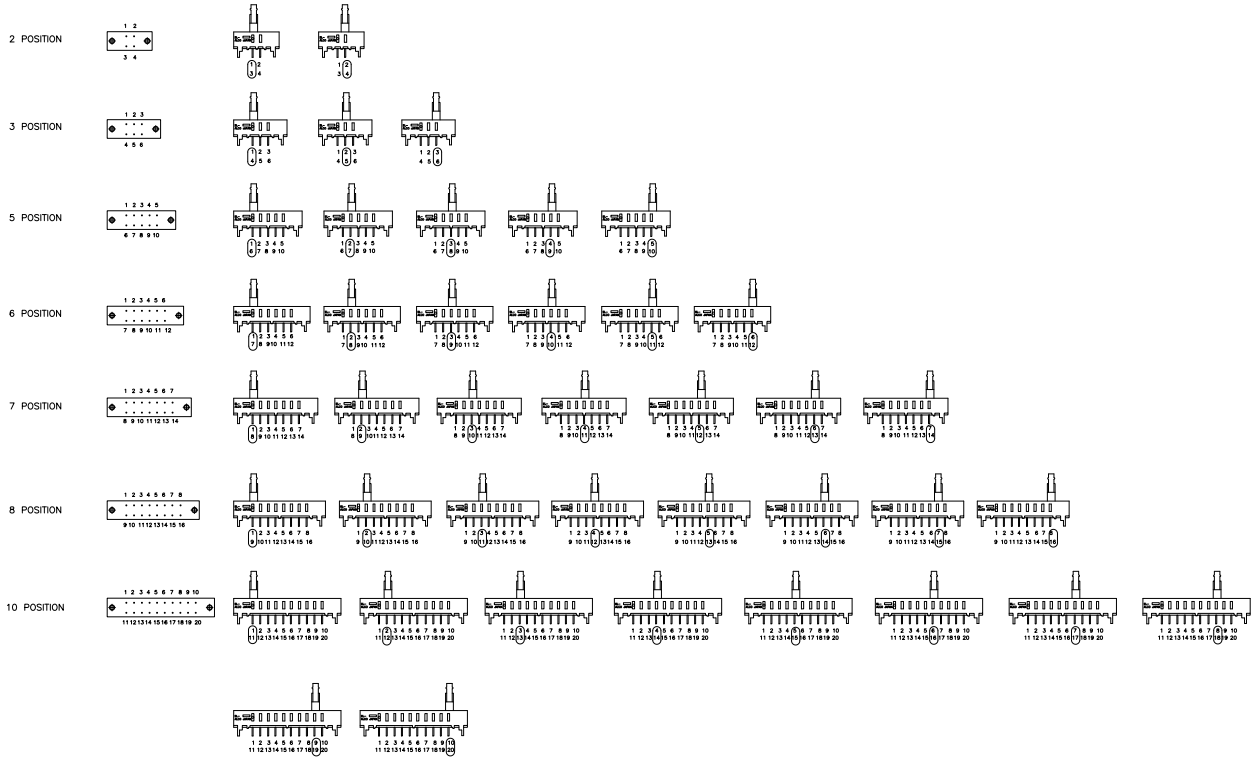
DATE: 10/07/09
 DRAWING NO: 1825073

CUSTOMER DRAWING

THIS DRAWING IS UNPUBLISHED
 ALL RIGHTS RESERVED

REV	DATE	DESCRIPTION	BY	APP
AD	00	SEE SHEET 1	-	-

OF POS. BOTTOM VIEW



THIS DRAWING IS A CONTROLLED DOCUMENT.		REV	DATE	DESCRIPTION	BY	APP	
UNLESS OTHERWISE SPECIFIED:		AD	00	SEE SHEET 1	-	-	
UNITS: INCHES	FRONT VIEW	TE Connectivity					
FRONT VIEW	TOP VIEW	SLIDE SWITCH, SL SERIES					
RIGHT VIEW	LEFT VIEW	SIZE	DATE	ISSUE	DRAWING NO.	REWORKED TO	
SEE SHEET 1	SEE SHEET 1	A1	00779	G=1825073			
CUSTOMER DRAWING		SCALE	2:1	SHEET	2	OF	C1