

0.230 [5.62]	0.800 [20.32]	0.260 [6.60]	1.000 [25.40]	SILVER	SMT	SIDE	6PDT	ASE62RS04	4-1825010-8
0.230 [5.62]	0.800 [20.32]	0.260 [6.60]	1.000 [25.40]	GOLD	SMT	SIDE	6PDT	ASE62RGS04	4-1825010-7
0.230 [5.62]	0.800 [20.32]	0.260 [6.60]	1.000 [25.40]	SILVER	SMT	SIDE	6PDT	ASE62RGL04	4-1825010-6
0.230 [5.62]	0.800 [20.32]	0.260 [6.60]	1.000 [25.40]	GOLD	SMT	SIDE	6PDT	ASE62RGS04	4-1825010-5
0.230 [5.62]	0.800 [20.32]	0.260 [6.60]	1.000 [25.40]	SILVER	SMT	TOP	6PDT	ASE62GS04	4-1825010-4
0.230 [5.62]	0.800 [20.32]	0.260 [6.60]	1.000 [25.40]	GOLD	SMT	TOP	6PDT	ASE62GS04	4-1825010-3
0.230 [5.62]	0.800 [20.32]	0.260 [6.60]	1.000 [25.40]	SILVER	SMT	TOP	6PDT	ASE62L04	4-1825010-2
0.230 [5.62]	0.800 [20.32]	0.260 [6.60]	1.000 [25.40]	GOLD	SMT	TOP	6PDT	ASE62L04	4-1825010-1
0.230 [5.62]	0.800 [20.32]	0.260 [6.60]	1.000 [25.40]	GOLD	THRU-HOLE	SIDE	6PDT	ASE62RGS04	4-1825010-9
0.230 [5.62]	0.800 [20.32]	0.260 [6.60]	1.000 [25.40]	SILVER	THRU-HOLE	SIDE	6PDT	ASE62RGS04	4-1825010-9
0.230 [5.62]	0.800 [20.32]	0.260 [6.60]	1.000 [25.40]	GOLD	THRU-HOLE	TOP	6PDT	ASE62GS04	4-1825010-8
0.230 [5.62]	0.800 [20.32]	0.260 [6.60]	1.000 [25.40]	SILVER	THRU-HOLE	TOP	6PDT	ASE62GS04	4-1825010-7
0.230 [5.62]	0.900 [22.86]	0.360 [9.14]	1.100 [27.94]	SILVER	SMT	SIDE	4P3T	ASE43RGS04	4-1825010-6
0.230 [5.62]	0.900 [22.86]	0.360 [9.14]	1.100 [27.94]	GOLD	SMT	SIDE	4P3T	ASE43RGS04	4-1825010-5
0.230 [5.62]	0.900 [22.86]	0.360 [9.14]	1.100 [27.94]	SILVER	SMT	SIDE	4P3T	ASE43RGL04	4-1825010-4
0.230 [5.62]	0.900 [22.86]	0.360 [9.14]	1.100 [27.94]	GOLD	SMT	SIDE	4P3T	ASE43RGL04	4-1825010-3
0.230 [5.62]	0.900 [22.86]	0.360 [9.14]	1.100 [27.94]	SILVER	SMT	TOP	4P3T	ASE43GS04	4-1825010-2
0.230 [5.62]	0.900 [22.86]	0.360 [9.14]	1.100 [27.94]	GOLD	SMT	TOP	4P3T	ASE43GS04	4-1825010-1
0.230 [5.62]	0.900 [22.86]	0.360 [9.14]	1.100 [27.94]	SILVER	SMT	TOP	4P3T	ASE43L04	4-1825010-0
0.230 [5.62]	0.900 [22.86]	0.360 [9.14]	1.100 [27.94]	GOLD	SMT	TOP	4P3T	ASE43L04	4-1825010-9
0.230 [5.62]	0.900 [22.86]	0.360 [9.14]	1.100 [27.94]	GOLD	THRU-HOLE	SIDE	4P3T	ASE43RGS04	4-1825010-8
0.230 [5.62]	0.900 [22.86]	0.360 [9.14]	1.100 [27.94]	SILVER	THRU-HOLE	SIDE	4P3T	ASE43RGS04	4-1825010-7
0.230 [5.62]	0.900 [22.86]	0.360 [9.14]	1.100 [27.94]	GOLD	THRU-HOLE	TOP	4P3T	ASE43GS04	4-1825010-6
0.230 [5.62]	0.900 [22.86]	0.360 [9.14]	1.100 [27.94]	SILVER	THRU-HOLE	TOP	4P3T	ASE43GS04	4-1825010-5
0.230 [5.62]	0.500 [12.70]	0.260 [6.60]	0.700 [17.78]	GOLD	SMT	SIDE	4PDT	ASE42RGS04	4-1825010-3
0.230 [5.62]	0.500 [12.70]	0.260 [6.60]	0.700 [17.78]	SILVER	SMT	SIDE	4PDT	ASE42RGL04	4-1825010-2
0.230 [5.62]	0.500 [12.70]	0.260 [6.60]	0.700 [17.78]	GOLD	SMT	SIDE	4PDT	ASE42RGL04	4-1825010-1
0.230 [5.62]	0.500 [12.70]	0.260 [6.60]	0.700 [17.78]	SILVER	SMT	TOP	4PDT	ASE42GS04	4-1825010-9
0.230 [5.62]	0.500 [12.70]	0.260 [6.60]	0.700 [17.78]	GOLD	SMT	TOP	4PDT	ASE42GS04	4-1825010-8
0.230 [5.62]	0.500 [12.70]	0.260 [6.60]	0.700 [17.78]	SILVER	SMT	TOP	4PDT	ASE42L04	4-1825010-7
0.230 [5.62]	0.500 [12.70]	0.260 [6.60]	0.700 [17.78]	GOLD	THRU-HOLE	SIDE	4PDT	ASE42RGS04	4-1825010-6
0.230 [5.62]	0.500 [12.70]	0.260 [6.60]	0.700 [17.78]	SILVER	THRU-HOLE	SIDE	4PDT	ASE42RGS04	4-1825010-5
0.230 [5.62]	0.500 [12.70]	0.260 [6.60]	0.700 [17.78]	GOLD	THRU-HOLE	TOP	4PDT	ASE42GS04	4-1825010-4
0.230 [5.62]	0.500 [12.70]	0.260 [6.60]	0.700 [17.78]	SILVER	THRU-HOLE	TOP	4PDT	ASE42GS04	4-1825010-3
0.105 [2.67]	0.200 [5.08]	0.260 [6.60]	0.400 [10.16]	SILVER	SMT	SIDE	DPDT	ASE22RS04	4-1825010-2
0.105 [2.67]	0.200 [5.08]	0.260 [6.60]	0.400 [10.16]	GOLD	SMT	SIDE	DPDT	ASE22RGS04	4-1825010-1
0.105 [2.67]	0.200 [5.08]	0.260 [6.60]	0.400 [10.16]	SILVER	SMT	SIDE	DPDT	ASE22RL04	4-1825010-0
0.105 [2.67]	0.200 [5.08]	0.260 [6.60]	0.400 [10.16]	GOLD	SMT	SIDE	DPDT	ASE22RGL04	4-1825010-9
0.105 [2.67]	0.200 [5.08]	0.260 [6.60]	0.400 [10.16]	SILVER	SMT	TOP	DPDT	ASE22GS04	4-1825010-8
0.105 [2.67]	0.200 [5.08]	0.260 [6.60]	0.400 [10.16]	GOLD	SMT	TOP	DPDT	ASE22GS04	4-1825010-7
0.105 [2.67]	0.200 [5.08]	0.260 [6.60]	0.400 [10.16]	SILVER	THRU-HOLE	SIDE	DPDT	ASE22L04	4-1825010-6
0.105 [2.67]	0.200 [5.08]	0.260 [6.60]	0.400 [10.16]	GOLD	THRU-HOLE	SIDE	DPDT	ASE22L04	4-1825010-5
0.105 [2.67]	0.200 [5.08]	0.260 [6.60]	0.400 [10.16]	SILVER	THRU-HOLE	TOP	DPDT	ASE22GS04	4-1825010-4
0.105 [2.67]	0.200 [5.08]	0.260 [6.60]	0.400 [10.16]	GOLD	THRU-HOLE	TOP	DPDT	ASE22GS04	4-1825010-3
0.105 [2.67]	0.200 [5.08]	0.260 [6.60]	0.400 [10.16]	SILVER	THRU-HOLE	TOP	DPDT	ASE22GS04	4-1825010-2
0.105 [2.67]	0.200 [5.08]	0.260 [6.60]	0.400 [10.16]	GOLD	THRU-HOLE	TOP	DPDT	ASE22GS04	4-1825010-1
Dim D	Dim C	Dim B	Dim A	Finish	Mounting Style	Actuation	Function	Old T&B P/N	P/N

MATERIALS:  
BASE/COVER: PCT U94LV-0, BLACK.  
ACTUATOR: NYLON PA46 U94LV-0, NATURAL.  
MOVABLE CONTACT: COPPER ALLOY SILVER OR GOLD OVER NICKEL.  
FIXED CONTACT/TERMINAL: COPPER ALLOY SILVER OR GOLD OVER NICKEL.  
TERMINAL-COPPER ALLOY TIN OVER NICKEL.  
PACKAGING: 22" ANTI-STATIC TUBE.

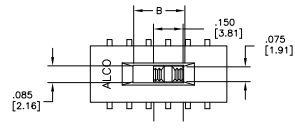
ELECTRICAL:  
CONTACT RATING: SILVER: 300 MILLIAMPS @ 115 VAC.  
GOLD: 0.4 VA 20 VDC.  
CONTACT RESISTANCE: INITIAL 40 MILLIOHMS MAX.  
INSULATION RESISTANCE: 10<sup>10</sup> MEGOHMS MIN.  
DIELECTRIC STRENGTH: 600 VOLTS RMS AT SEA LEVEL.  
LIFE EXPECTANCY: 15,000 CYCLES MIN.

ENVIRONMENTAL:  
OPERATING TEMPERATURE: -40°F TO +175°C TO +80°C).  
PROCESS CLEANING: WITH HYDROGEN AQUEOUS OR SOLVENT  
CLEANING PROCESSES.  
SOLDER HEAT RESISTANCE PER 109-202, COND. B(THRU-HOLE)  
109-201, COND. A (THRU-HOLE).  
SOLDERABILITY PER EIA 364-52 CLASS 2 CATEGORY 1

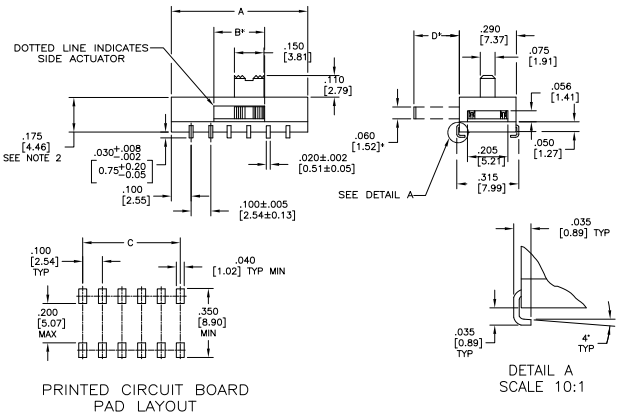
NOTES:  
1. ALL MATERIAL AND FINISHES SHALL COMPLY WITH EU  
DIRECTIVE 2002/95/EC OF 27JAN2003 (ROHS)

2. STANDARD PRODUCT (AFTER WELD) HEIGHT IS ALLOWED  
UP TO .180 IN. ALL SWITCH "SPECIAL" MUST MAINTAIN  
.178 MAX. (AFTER WELD) HEIGHT

[illegible]



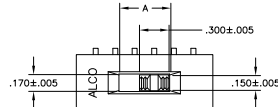
\* SIDE ACTUATOR ONLY.



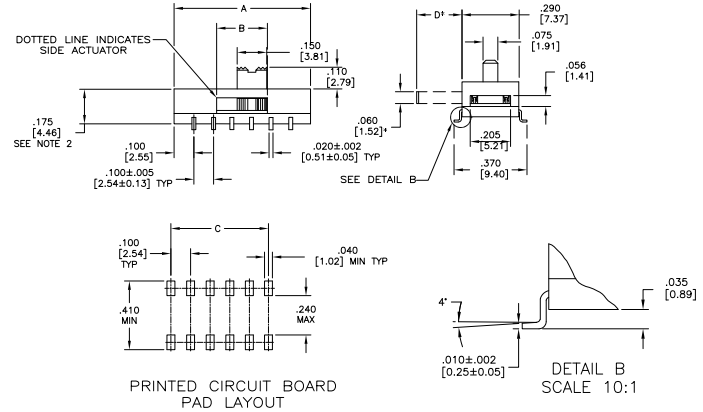
PRINTED CIRCUIT BOARD  
PAD LAYOUT

DETAIL A  
SCALE 10:1

"S" J-LEAD TYPE SURFACE MOUNT



\* SIDE ACTUATOR ONLY.



PRINTED CIRCUIT BOARD  
PAD LAYOUT

DETAIL B  
SCALE 10:1

"L" GULL WING TYPE SURFACE MOUNT

THIS DRAWING IS A CONTROLLED DOCUMENT.		TE CONNECTIVITY	
REVISIONS	DATE	DESCRIPTION	BY
AD	00	SEE SHEET 1	-

DIMENSIONS MILLIMETERS (mm)	DIMENSIONS INCHES (in)	DIMENSIONS MILLIMETERS (mm)	DIMENSIONS INCHES (in)
.035 [0.89] .040 [1.02] .056 [1.41] .060 [1.52] .075 [1.91] .100 [2.54] .150 [3.81] .170 [4.30] .200 [5.08] .290 [7.37] .315 [7.99]	.0014 [0.035] .0016 [0.041] .0022 [0.056] .0024 [0.061] .0030 [0.076] .0060 [0.152] .0063 [0.160] .0080 [0.203] .0118 [0.299] .0126 [0.320]	.035 [0.89] .040 [1.02] .056 [1.41] .060 [1.52] .075 [1.91] .100 [2.54] .150 [3.81] .170 [4.30] .200 [5.08] .290 [7.37] .315 [7.99]	.0014 [0.035] .0016 [0.041] .0022 [0.056] .0024 [0.061] .0030 [0.076] .0060 [0.152] .0063 [0.160] .0080 [0.203] .0118 [0.299] .0126 [0.320]

DIMENSIONS MILLIMETERS (mm)	DIMENSIONS INCHES (in)
.035 [0.89] .040 [1.02] .056 [1.41] .060 [1.52] .075 [1.91] .100 [2.54] .150 [3.81] .170 [4.30] .200 [5.08] .290 [7.37] .315 [7.99]	.0014 [0.035] .0016 [0.041] .0022 [0.056] .0024 [0.061] .0030 [0.076] .0060 [0.152] .0063 [0.160] .0080 [0.203] .0118 [0.299] .0126 [0.320]