

THIS DRAWING IS UNPUBLISHED
 ALL RIGHTS RESERVED

REV	DATE	DESCRIPTION	BY	CHK
00				
01		REVISED PER EDD-11-004587		

SPECIFICATIONS
 MAKE-BEFORE-BREAK

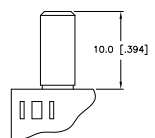
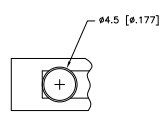
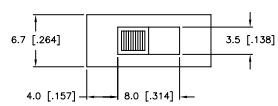
MATERIALS:
 ACTUATOR- THERMOPLASTIC, UL94HB
 TERMINAL BOARD- PHENOLIC LAMINATED SHEET, UL94HB, NATURAL
 FRAME- STEEL, NICKEL PLATE
 TERMINAL/FIXED CONTACT- COPPER ALLOY, GOLD OR SILVER OVER NICKEL PLATE
 MOVING CONTACT- COPPER ALLOY, GOLD OR SILVER OVER NICKEL PLATE
 DETENT BALL- STEEL
 COIL SPRING- GALVANIZED SPRING WIRE
 LEVER,(K SERIES ONLY)- ALUMINUM
 SEAL- EPOXY

ELECTRICAL:
 CONTACT RATING- .4VA@20VDC OR PEAK AC (GOLD); 300mA@125V AC (SILVER)
 INITIAL CONTACT RESISTANCE- 30 milliohm max.
 FINAL CONTACT RESISTANCE- 100 milliohm max. (AFTER TEST)
 INSULATION RESISTANCE- 1,000 Megohms min.
 DIELECTRIC STRENGTH- 500V RMS@SEA LEVEL
 LIFE EXPECTANCY- 15,000 CYCLES MIN.

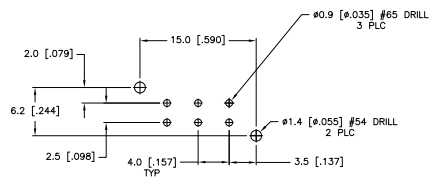
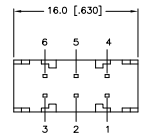
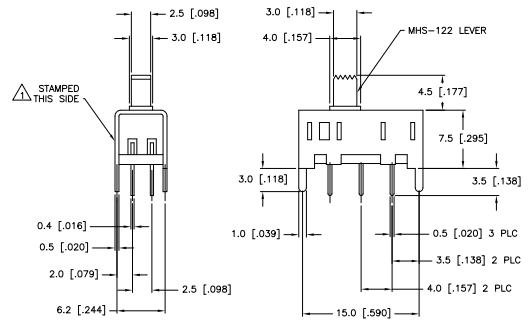
MECHANICAL:
 ACTUATION FORCE- 600+/-300 GRAMS
 TRAVEL- SEE P/N TABLE

ENVIRONMENTAL:
 OPERATING TEMPERATURE- -20 TO +85 DEGREES C
 STORAGE TEMPERATURE- -40 TO +100 DEGREES C
 RESISTANCE TO SOLDER HEAT PER 109-202, CONDITION B
 SOLDERABILITY PER EIA-364-52, CLASS 2, CATEGORY 1, 95% MIN COVERAGE

- NOTES:**
- 1 COUNTRY OF ORIGIN AND TE CONNECTIVITY LOGO LOCATED APPROXIMATELY AS SHOWN
 - 2 ALL MATERIALS AND FINISHES SHALL COMPLY WITH EU DIRECTIVE 2002/95/EC OF 27JAN2003 (ROHS)
 - 3 ANTI SOLDER WICK SEAL AT TERMINAL TO BOARD INTERFACE
 - 4 ALL PERFORMANCE TESTING WAS DONE IN ACCORDANCE TO TE CONNECTIVITY SPECIFICATION 102-2469
 - 5 OBSOLETE PARTS: OBSOLETE CIS STREAMLINING PER D.RENAUD/D.SINISI



MHS222K & MHS223K LEVER



RECOMMENDED BOARD LAYOUT
 PC LAYOUT TOLERANCE: ±0.02

MHS222 & MHS223 SERIES SWITCH

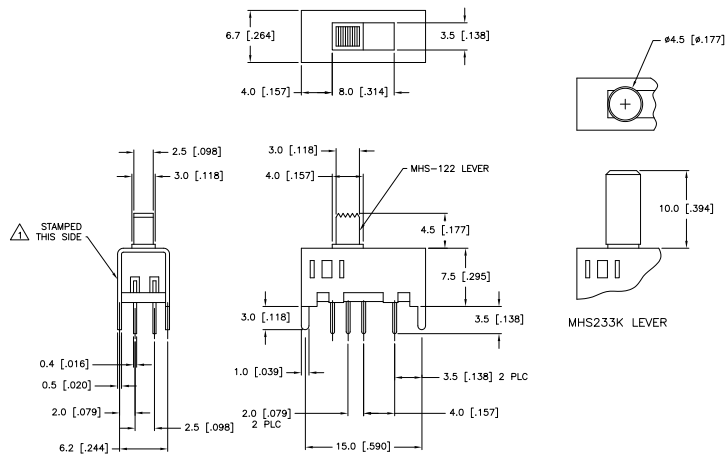
OBSOLETE	PART NO.	1&B PART NO.	TYPE	TRAVEL	PLATING	TERMINALS CONNECTED WHEN SLIDE IS IN POSITION SHOWN								
						1	2	3	4	5	6			
	4-1826289-1	MHS233K04	DP3T	2.00	GOLD	-	6-5	2-1	-	7-6	3-2	-	8-6	4-2
	1-1825289-0	MHS233K04	DP3T	2.00	SILVER	-	6-5	2-1	-	7-6	3-2	-	8-6	4-2
	1825289-9	MHS233K04	DP3T	2.00	GOLD	-	6-5	2-1	-	7-6	3-2	-	8-6	4-2
	1825289-8	MHS233K04	DP3T	2.00	SILVER	-	6-5	2-1	-	7-6	3-2	-	8-6	4-2
	-	MHS223K04	DPDT	2.00	GOLD	5-4	2-1	-	OFF	-	-	-	6-5	3-2
	1825289-7	MHS223K04	DPDT	2.00	SILVER	5-4	2-1	-	OFF	-	-	-	6-5	3-2
	1825289-6	MHS223K04	DPDT	2.00	GOLD	5-4	2-1	-	OFF	-	-	-	6-5	3-2
	1825289-5	MHS223K04	DPDT	2.00	SILVER	5-4	2-1	-	OFF	-	-	-	6-5	3-2
OBSOLETE	4826289-4	MHS222K04	DPDT	4.00	GOLD	5-4	2-1	-	NONE	-	-	-	6-5	3-2
	4826289-3	MHS222K04	DPDT	4.00	SILVER	5-4	2-1	-	NONE	-	-	-	6-5	3-2
	1825289-2	MHS222G04	DPDT	4.00	GOLD	5-4	2-1	-	NONE	-	-	-	6-5	3-2
	1825289-1	MHS222G04	DPDT	4.00	SILVER	5-4	2-1	-	NONE	-	-	-	6-5	3-2

TE Connectivity
 SLIDE SWITCH, MHS SERIES, DOUBLE POLE, VERTICAL

DATE: 00779 (G) 1825289

CUSTOMER DRAWING

REVISES		DATE	BY	APP'D
AD	00			



SPECIFICATIONS
 MAKE-BEFORE-BREAK

MATERIALS:
 ACTUATOR- THERMOPLASTIC, UL94HB
 TERMINAL BOARD- PHENOLIC LAMINATED SHEET, UL94HB, NATURAL
 FRAME- STEEL, NICKEL PLATE
 TERMINAL/FIXED CONTACT- COPPER ALLOY, GOLD OR SILVER OVER NICKEL PLATE
 MOVING CONTACT- COPPER ALLOY, GOLD OR SILVER OVER NICKEL PLATE
 DETENT BALL- STEEL
 COIL SPRING- GALVANIZED SPRING WIRE
 LEVER,(K SERIES ONLY)- ALUMINUM
 SEAL- EPOXY

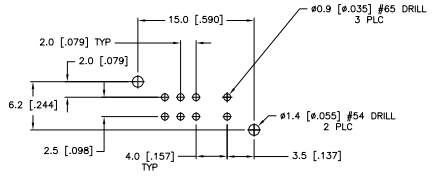
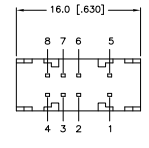
ELECTRICAL:
 CONTACT RATING- .4VA@20VDC OR PEAK AC (GOLD); 300mA@125V AC (SILVER)
 INITIAL CONTACT RESISTANCE- 30 milliohm max.
 FINAL CONTACT RESISTANCE- 100 milliohm max. (AFTER TEST)
 INSULATION RESISTANCE- 1,000 Megohms min.
 DIELECTRIC STRENGTH- 500V RMS@SEA LEVEL
 LIFE EXPECTANCY- 15,000 CYCLES MIN.

MECHANICAL:
 ACTUATION FORCE- 600+/-300 GRAMS
 TRAVEL- SEE P/N TABLE

ENVIRONMENTAL:
 OPERATING TEMPERATURE- -20 TO +85 DEGREES C
 STORAGE TEMPERATURE- -40 TO +100 DEGREES C
 RESISTANCE TO SOLDER HEAT PER 109-202, CONDITION B
 SOLDERABILITY PER EIA-364-52, CLASS 2, CATEGORY 1, 95% MIN COVERAGE

NOTES:

1. COUNTRY OF ORIGIN AND TE CONNECTIVITY LOGO PER TEC-202-36 LOCATED APPROXIMATELY AS SHOWN
2. ALL MATERIALS AND FINISHES SHALL COMPLY WITH EU DIRECTIVE 2002/95/EC OF 27JAN2003 (ROHS)
3. ANTI SOLDER WICK SEAL AT TERMINAL TO BOARD INTERFACE
4. ALL PERFORMANCE TESTING WAS DONE IN ACCORDANCE TO TE CONNECTIVITY SPECIFICATION 102-2469



RECOMMENDED BOARD LAYOUT
 PCB LAYOUT TOLERANCE: ±.002

**MHS233 SERIES
 SWITCH**

THIS DRAWING IS A CONTROLLED DOCUMENT.		REV. 00	DATE	BY	APP'D
DRAWING NO. 100779		REV. 00	DATE	BY	APP'D
CUSTOMER DRAWING		REV. 00	DATE	BY	APP'D