

4

3

2

1

THIS DRAWING IS UNPUBLISHED. RELEASED FOR PUBLICATION 1825116.1825116  
 © COPYRIGHT 1825116. ALL RIGHTS RESERVED.

LOC	DIST	REVISIONS			
F	LNK	DESCRIPTION	DATE	BY	APPD
AD	00				
	B3	REVISED PER ECO-11-004820	11MAR11	RK	HMR

SPECIFICATIONS:  
 BREAK BEFORE MAKE

**MATERIALS:**

FRAME: STEEL,ZINC PLATE  
 ACTUATOR: PBT, UL94V0, FINISH: SEE TABLE

TERMINAL/FIXED CONTACT: COPPER ALLOY, AG OVER NI  
 OR AU OVER NI PLATE.

MOVING CONTACT: COPPER ALLOY, AG OVER NI  
 OR AU OVER NI PLATE

TERMINAL BOARD: PHENOLIC, UL94HB  
 SPRING: CARBON STEEL WIRE

**ELECTRICAL:**

CONTACT RATING, 250MILLIAMPS @ 125V AC,  
 150MILLIAMPS @ 12V DC  
 CONTACT RESISTANCE, 30 MILLIOHMS MAX (INITIAL),  
 60 MILLIOHMS AFTER TEST  
 INSULATION RESISTANCE: 500 MEGOHMS MIN.  
 DIELECTRIC STRENGTH: 500 VOLTS RMS @SEA LEVEL  
 LIFE EXPECTANCY: 10,000 CYCLES MIN, NO LOAD,  
 6,000 AT RATED CURRENT.

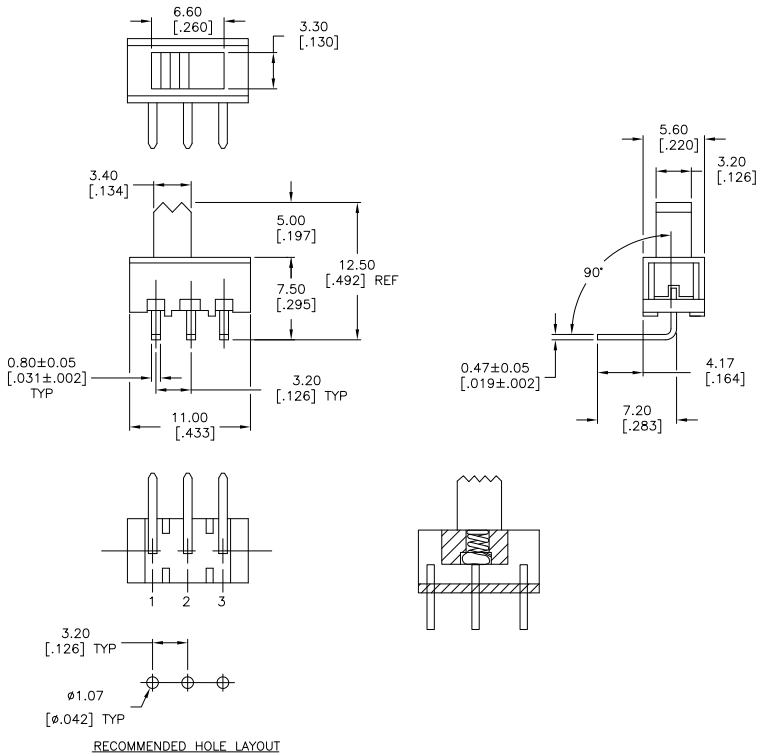
**MECHANICAL:**

ACTION FORCE, 250 +150/-100 GRAMS  
 TRAVEL, 3.20(.126)

**ENVIRONMENTAL:**

OPERATING TEMPERATURE: -10°C TO +85°C  
 STORAGE TEMPERATURE: -10°C TO +85°C  
 RESISTANCE TO SOLDER HEAT, 260°C FOR 10 SEC  
 PER 109-202, CONDITION B  
 SOLDERABILITY PER EIA-364-56A, PROCEDURE 3,  
 CONDITION B

- 1 ALL MATERIALS AND FINISHES SHALL COMPLY WITH EU DIRECTIVE 2002/95/EC OF 27 JAN2003 (ROHS)
- 2 ALL PERFORMANCE SPECIFICATIONS WERE TESTED IN ACCORDANCE WITH JIS-C-5441 UNLESS OTHERWISE STATED.



RECOMMENDED HOLE LAYOUT

NATURAL	GOLD	1-2	2-3	SLS121NRAG04	1825116-3
NATURAL	SILVER	1-2	2-3	SLS121NRA04	1825116-2
BLACK	SILVER	1-2	2-3	SLS121RA04	1825116-1
		LEFT	RIGHT		
ACTUATOR FINISH	FINISH	ACTUATOR POSITION	ALCO P/N	PART NO	

THIS DRAWING IS A CONTROLLED DOCUMENT.		DRN S. S. VISNESWARA	OTMARDS	TE Connectivity	
DIMENSIONS: mm [INCHES]		CHK M. S. SARVER	NAME	SLIDE SWITCH, SPDT, RIGHT ANGLE (SLS121RA)	
TOLERANCES UNLESS OTHERWISE SPECIFIED:		PRODUCT SPEC	APPLICATION SPEC	SIZE	CAGE CODE DRAWING NO
0 PLG	± .05	—	—	A2	00779 C=1825116
1 PLG	± .05	—	—	RESTRICTED TO	—
2 PLG	± .05	—	—	SCALE	1:1
3 PLG	± .05	—	—	SHEET	1 of 1
4 PLG	± .05	—	—	REV	B3
ANGLES	± .05	—	—	CUSTOMER DRAWING	
MATERIAL	SEE TABLE	FINISH	—	—	