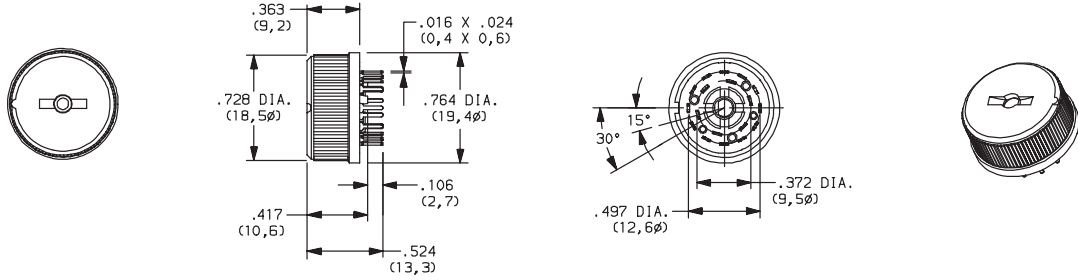




# RBP12 Series 1-6 Pole Miniature Rotary Switches

DESIGNATION

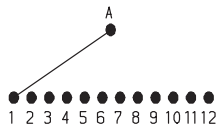
RBP12



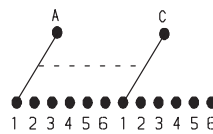
SWITCH FUNCTION

30° INDEXING		
NO. POLES	MODEL NO.	SWITCH FUNCTION
SP	112S	12 Position No Stops
	103B03	3 Positions
	105B05	5 Positions
	107B07	7 Positions
	108B08	8 Positions
	110B10	10 Positions
DP	206S	6 Positions No Stop
	202B02	3 Positions
	203B03	3 Positions
	205B05	5 Positions

SP MODELS SCHEMATIC

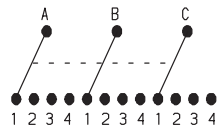


DP MODELS SCHEMATIC

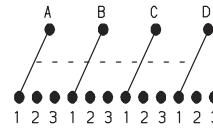


30° INDEXING		
NO. POLES	MODEL NO.	SWITCH FUNCTION
3P	304B04	4 Positions
4P	403B03	3 Positions
6P	602B02	2 Positions

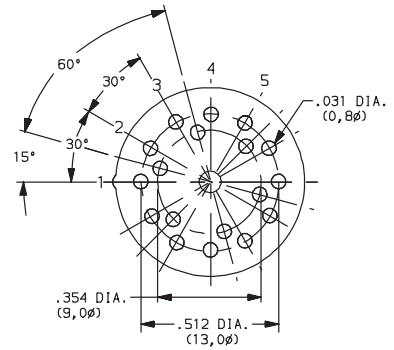
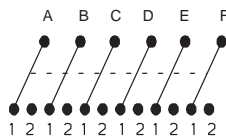
3P MODELS SCHEMATIC



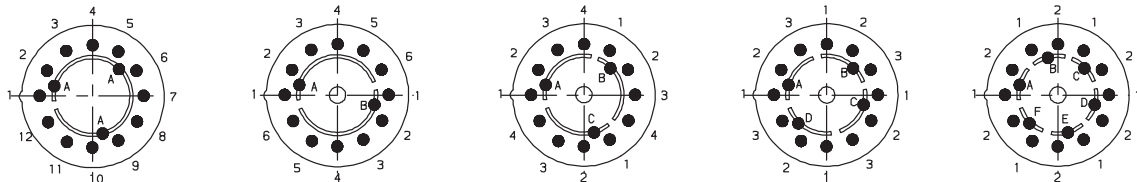
4P MODELS SCHEMATIC



6P MODELS SCHEMATIC



PC LAYOUTS



Dimensions are shown: Inch (mm)  
Specifications and dimensions subject to change



# RBP12 Series

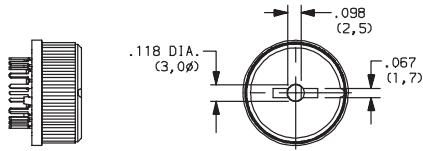
## 1-6 Pole Miniature Rotary Switches

### SWITCHING MODE

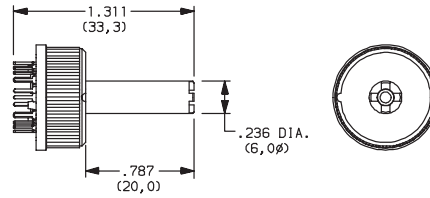
- N** NON-SHORTING, BBM (break-before-make)
- C** SHORTING, MBB (make-before-break)

### ACTUATOR

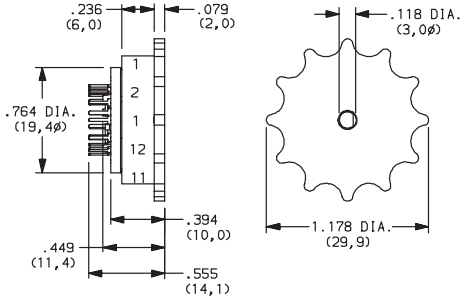
**F** SCREWDRIVER SLOT



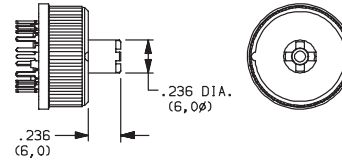
**AD** PLASTIC SHAFT, <20 mm (.787)



**M** THUMBWHEEL



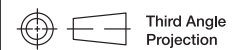
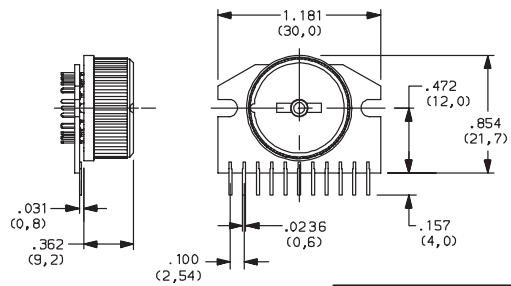
**S** PLASTIC SHAFT, 6 mm (.236)



### OPTION

**(NONE)**

**P** LATERAL PCB ADAPTATION



Dimensions are shown: Inch (mm)  
Specifications and dimensions subject to change

www.ck-components.com



Rotary



# RBP12 Series 1-6 Pole Miniature Rotary Switches

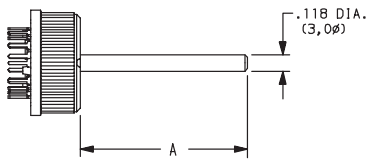
## CONTACT MATERIAL

OPTION CODE	CONTACT AND TERMINAL MATERIAL	RATING	
<b>S</b>	SILVER	LOW LEVEL/DRY CIRCUIT	SWITCH: 130 mA, POWER: 5 VA MAXIMUM. CARRY: 3 AMPS
<b>G</b>	GOLD	LOW LEVEL/DRY CIRCUIT OR POWER	SWITCH: 20 mA, POWER: 0.5 VA MAXIMUM. CARRY: 3 AMPS

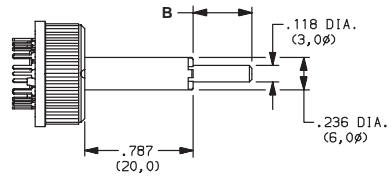
\* Note: See Technical Data section of this catalog for RoHS compliant and compatible definition and specifications.

## AVAILABLE HARDWARE

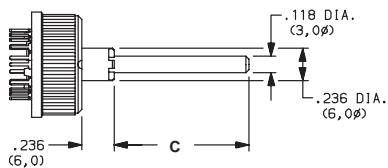
F + FA SHAFT



AD + FA SHAFT

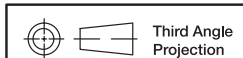


S + FA SHAFT



PART NUMBER	"A"
Y460P0067FP	.394 (10,0)
Y460P0060FP	.590 (15,0)
Y460P0090FP	.787 (20,0)
Y460320100P	.984 (25,0)
Y460P0018FP	1.969 (50,0)
Y460P0022FP	2.756 (70,0)

**NOTE:** FA metallic shaft, consult customer service for available lengths.



Dimensions are shown: Inch (mm)  
Specifications and dimensions subject to change

www.ck-components.com



Rotary