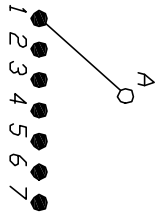
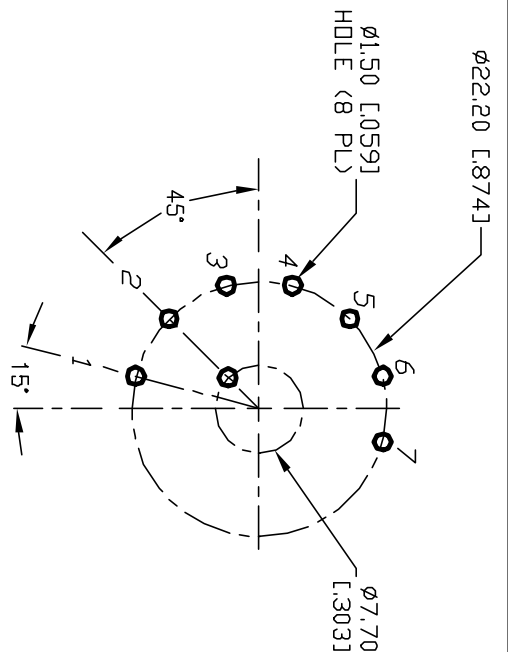


NOTES:

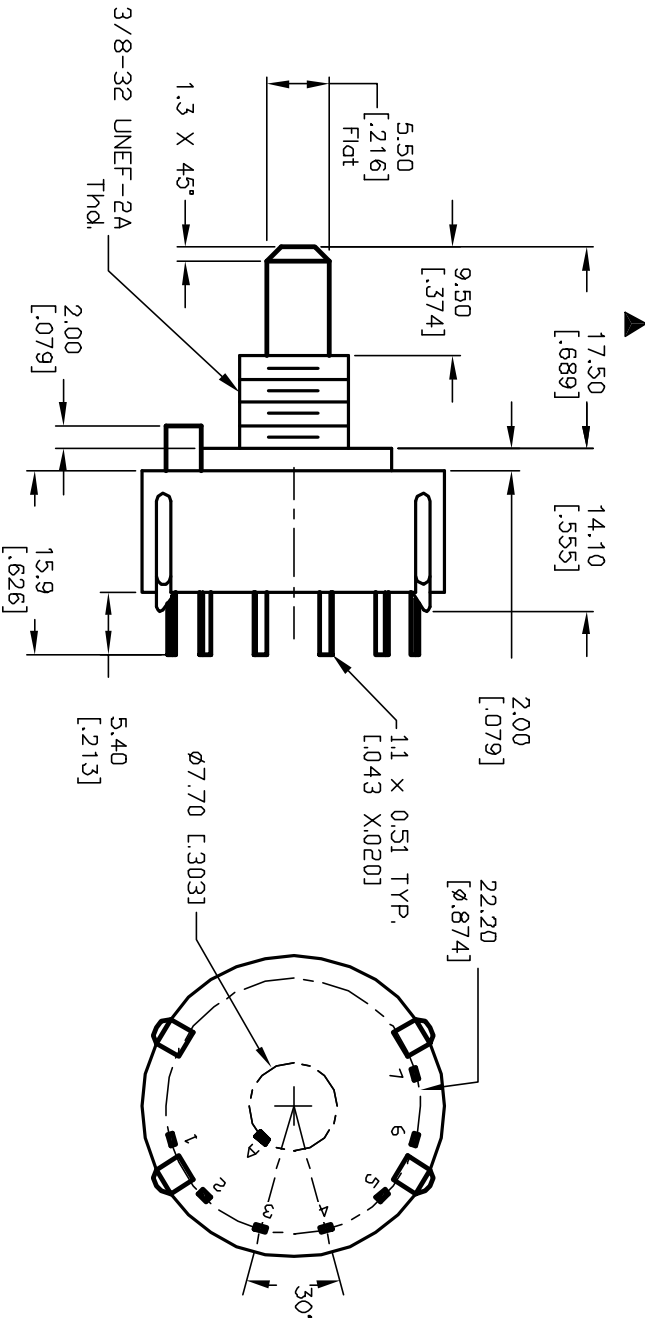
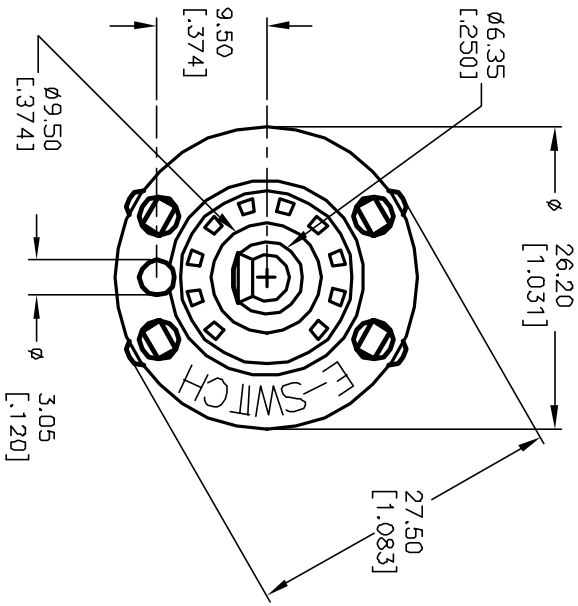
1. ALL DIMENSION IN MM [INCH]
2. GENERAL TOLERANCE: X.X=±0.4  
X.XXX=±0.25
3. TERM. NOS. FOR REF. ONLY
4. CONTACT RATING SWITCHING: 150mA, 250V AC/DC  
350mA, 110V AC/DC
5. CONTACT MATERIAL: SILVER OVER COPPER ALLOY
6. OPERATING FORCE: 425±100 CM/STANDARD
7. OPERATING TEMP: -30° to 85°C
8. CIRCUIT SP: 7 POSITIONS, 30° INDEX.
9. DIELECTRIC STRENGTH: 1000V RMS min.@SEA LEVEL.
10. DESIGNATE MAJOR DIMENSIONS
11. SUPPLIED STOP RING, LOCK NUT AND WASHER (NOT SHOWN).



CONTACT CONFIGURATION  
Timing: Non-Shorting (BBM)



RECOMMENDED P.C.B. LAYOUT



**E-SWITCH®**

|      |         |                         |          |      |
|------|---------|-------------------------|----------|------|
| B    | 12422   | REV. PER NEW CATALOG    | 10/28/02 | CJB  |
| A    | 11275   | RELEASED FOR PRODUCTION | 3/6/01   | RJC  |
| REV. | ECN No. | DESCRIPTION             | DATE     | CHKD |

|                          |  |       |        |     |         |     |
|--------------------------|--|-------|--------|-----|---------|-----|
| TITLE                    |  | SCALE | DATE   | DR  | DWG     | REV |
| KC-17-A (9.5mm)-01-N-P-S |  | 1.5:1 | 3/5/01 | RJC | G100001 | B   |

THE INFORMATION CONTAINED IN THIS DOCUMENT IS PROPRIETARY TO E-SWITCH AND IS NOT TO BE COPIED OR TRANSFERRED