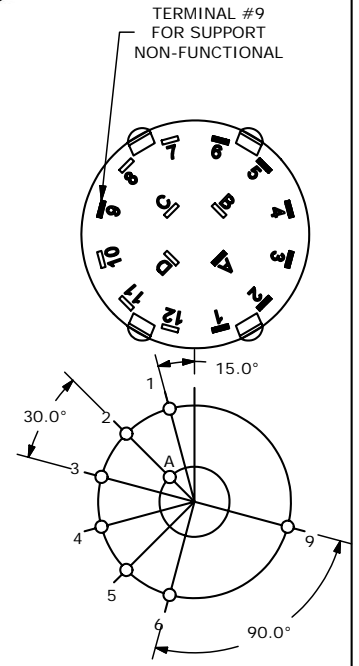
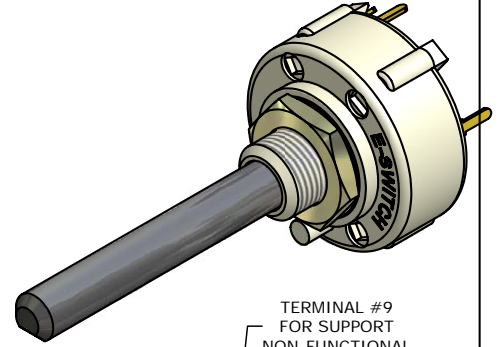
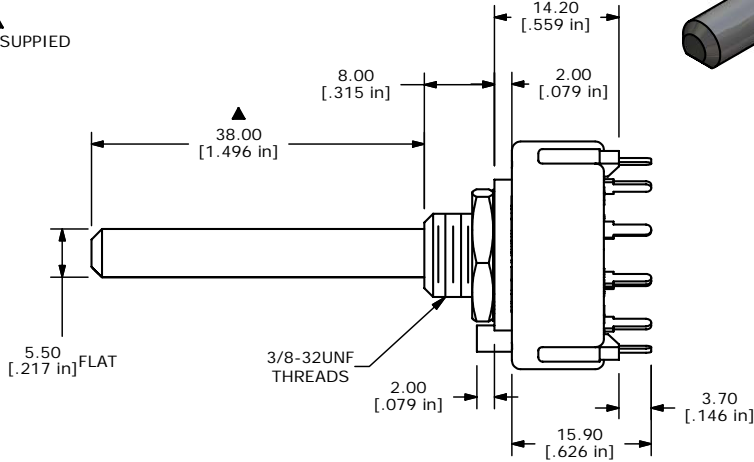
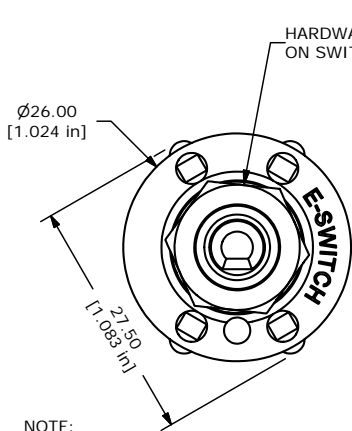


CONTACT CONFIGURATION
TIMING (BBM) NON-SHORTING



NOTE:

1. ALL DIMENSIONS IN MM [INCH].
2. GENERAL TOLERANCE: X.X=±0.4
X.XX=±0.25
3. TERM. NOS. FOR REFERENCE ONLY.
4. CONTACT MATERIAL: SILVER ALLOY
5. CONTACT RATING: 0.3A @125 VAC
6. OPERATING FORCE: 800±300gm-cm
7. OPERATING TEMP: -30°C TO 85°C
- ▲ 8. CIRCUIT SP: 6 POSITION 30° INDEX.
9. DIELECTRIC STRENGTH: 500VAC FOR 1 MIN
- ▲ 10. HARDWARE SUPPLIED ON SWITCH:
LOCKWASHER, HEXNUT, STOP RING
11. 2002/95/EC (ROHS) COMPLIANT
12. PACKAGING: 1,000PCS PER CARTON
13. ▲ DENOTES CRITICAL PARAMETER.

E-SWITCH®

B	15455	ADDED PACKAGING INFORMATION	10/26/05	PH
A	15417	RELEASED FOR PRODUCTION	10/24/05	PH
REV	PCR NO	DESCRIPTION	DATE	BY

TITLE KC16A38.001NPS				
SCALE 1.5:1	DATE 10/24/2005	DR PH	DWG G510732	REV B

THE INFORMATION CONTAINED IN THIS DOCUMENT IS PROPRIETARY TO E-SWITCH AND IS NOT TO BE COPIED OR TRANSFERRED