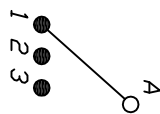
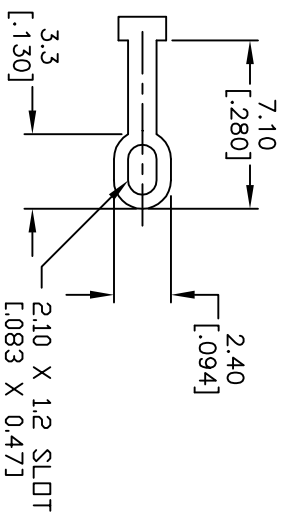


NOTES:

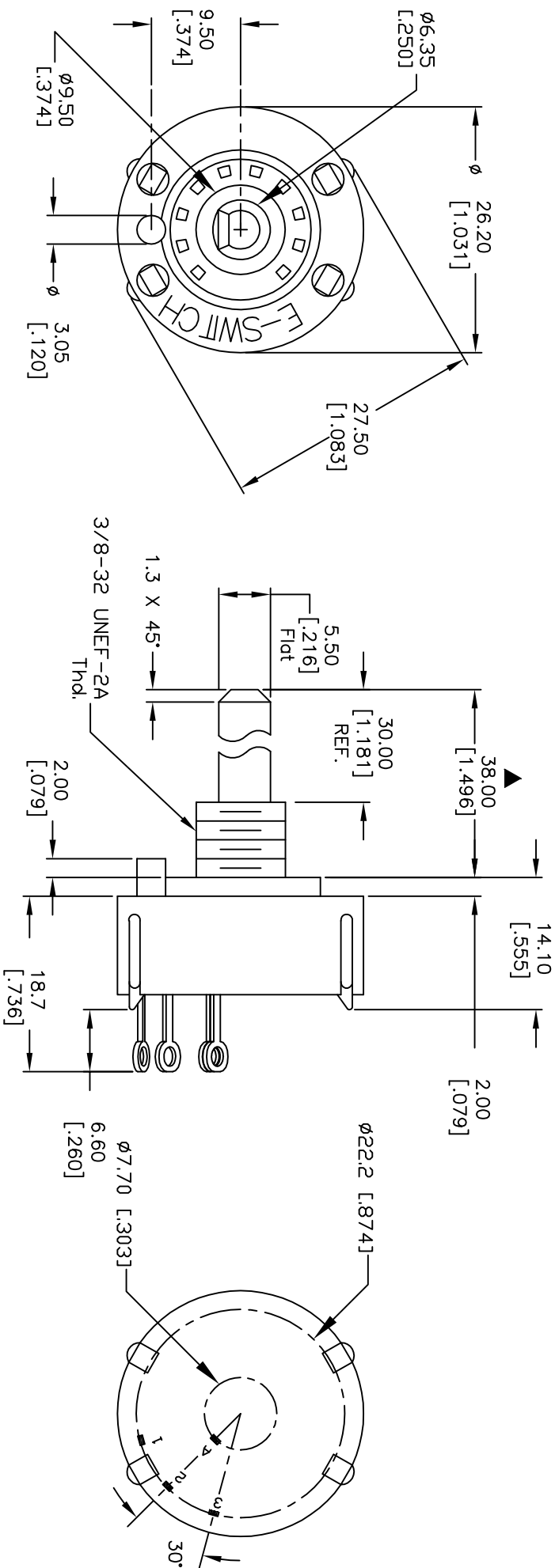
1. ALL DIMENSION IN MM [INCH]
2. GENERAL TOLERANCE: X.X=±0.4  
X.XX=±0.25
3. TERM. NOS. FOR REF. ONLY
4. CONTACT RATING SWITCHING: 150mA, 250V AC/DC  
350mA, 110V AC/DC
5. CONTACT RATING (NON-SWITCHING) 5A
6. OPERATING FORCE: 425±100 CM/STANDARD
7. OPERATING TEMP: -30° to 85°C
8. CIRCUIT SP: 3 POSITIONS, 30° INDEX
9. DIELECTRIC STRENGTH 1000V RMS min. @ SEA LEVEL
10. DESIGNATE MAJOR DIMENSIONS
11. SUPPLIED HARDWARE: LOCKWASHER, HEXNUT, STOPRING NOT SHOWN.
12. 2002/95/EC (ROHS) COMPLIANT



CONTACT CONFIGURATION  
Timing: Non-Shorting (BBM)



TERMINATION DETAIL  
SCALE 2X



**E-SWITCH®**

C	16263	CHANGED NOTE #11	7/26/06	BD
B	12356	REV DESC PER NEW CATALOG	11/22/02	CJB
A	11301	RELEASED FOR PRODUCTION	3/14/01	CJB
REV.	ECN NO.	DESCRIPTION	DATE	CHKD

TITLE		SCALE		DATE		DR		DWG		REV	
KC-13-A (30.0mm)-01-N-L-S		1.5:1		3/14/01		CJB		G529480		C	

THE INFORMATION CONTAINED IN THIS DOCUMENT IS PROPRIETARY TO E-SWITCH AND IS NOT TO BE COPIED OR TRANSFERRED