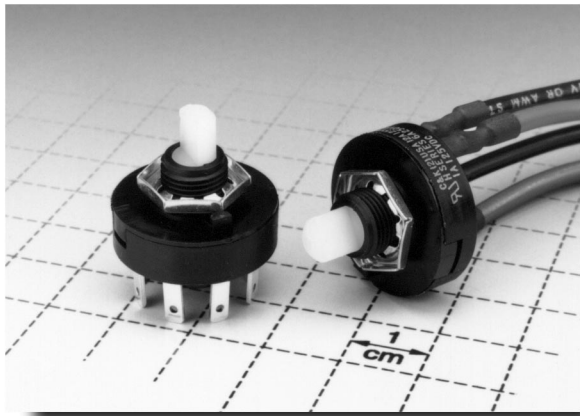


# C&K H Series Power ROTA-SLIDE® Rotary Switches



## Features/Benefits

- Multi-pole and multi-position
- Positive detent
- Power switching up to 12 AMPS
- Value added capability

## Typical Applications

- Small appliances
- Industrial equipment
- Elevators

## Build-A-Switch

Our easy Build-A-Switch concept allows you to mix and match options to create the switch you need. Below is a complete listing of options shown in catalog. To order, simply select desired option from each category and place in the appropriate box. A switch with standard options is shown on page I-23. Available options are shown and described on pages I-23 and I-24. For additional options not shown in catalog, consult Customer Service Center.

Typical Example: H 1 0 0 — 0 7 — R R — 0 5 — Q —  

### Switch Function

- H100** (STD.) SP, 45° Index, 8 pos. no stops
- H101** SPST, 45° Index
- H102** SPDT, 45° Index
- H103** SP, 45° Index, 3 pos.
- H104** SP, 45° Index, 4 pos.
- H105** SP, 45° Index, 5 pos.
- H106** SP, 45° Index, 6 pos.
- H107** SP, 45° Index, 7 pos.
- H108** SP, 45° Index, 8 pos.
- H200** DP, 45° Index, 4 pos. no stops
- H201** DPST, 45° Index
- H202** DPDT, 45° Index
- H203** DP, 45° Index, 3 pos.
- H204** DP, 45° Index, 4 pos.
- HA01** SPDT, 90° Index
- HA05** SP, 90° Index, 3 pos.
- HA55** SP, 90° Index, 4 pos. no stops
- HB11** DPDT, 90° Index

### Actuator

**07** (STD.) .275" high with .156" flat

### Mounting Style

**RR** (STD.) 3/8-40 threaded bushing

### Terminations

- 05** (STD.) .110" quick connect
- 01** Solder lug with notch
- WC** Wire lead

### Contact Material

**Q** (STD.) Silver

### Seal

- NONE** (STD.) No seal
- E** Epoxy seal

## Specifications

CONTACT RATING: 12 Amps @ 125 V AC; 6 AMPS @ 250 V AC;  
1 AMP @ 125 V DC (UL/CSA).

ELECTRICAL LIFE: 10,000 make-and-break cycles at full load.

INSULATION RESISTANCE: 10<sup>9</sup> ohms min.

DIELECTRIC STRENGTH: 1,000 V RMS min. @ sea level.

INDEXING: 45°-one contact models, 8 positions max.; two contact models, 4 positions max. 90°-one contact models, 4 positions max.; two contact models, 2 positions max.

## Materials

HOUSING & BUSHING: 6/6 nylon (UL 94V-2).

ACTUATOR: 6/6 nylon (UL 94V-2).

CONTACTS & TERMINALS: Copper, silver plated.

CONTACT SPRING: Music wire or stainless steel.

MOUNTING NUT: Steel, zinc plated.

TERMINAL SEAL: Epoxy.

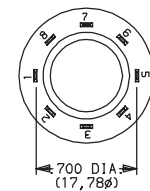
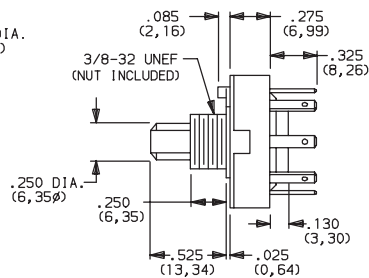
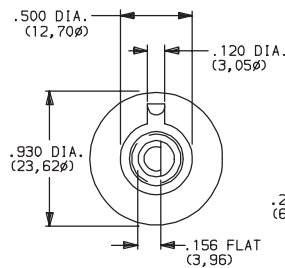
**NOTE:** Specifications and materials listed above are for switches with standard options. For information on specific and custom switches, consult Customer Service Center.

# C&K H Series Power ROTA-SLIDE® Rotary Switches

## SWITCHES WITH STANDARD OPTIONS

PART NUMBER	FUNCTION	INDEXING
<b>H10007RR05Q</b>	SP	45°

NOTE: For panel mounting information, see page I-24.



TERM. NOS.  
MOLDED ON HOUSING



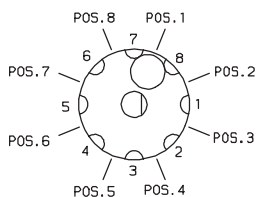
**H10007RR05Q**  
**SP**

## SWITCH FUNCTION



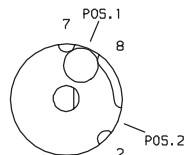
SP MODELS 45° INDEXING			
NO. POLES	MODEL NO.	SWITCH FUNCTION	TERMINALS
SP	<b>H100</b>	8 Position No Stops	All Terminals
	<b>H101</b>	SPST	8-1
	<b>H102</b>	SPDT	7-8-1
	<b>H103</b>	3 Position	7-8-1-2
	<b>H104</b>	4 Position	7-8-1-2-3
	<b>H105</b>	5 Position	7-8-1-2-3-4
	<b>H106</b>	6 Position	7-8-1-2-3-4-5
	<b>H107</b>	7 Position	All Terminals
<b>H108</b>	8 Position	All Terminals	

SP MODELS 45° INDEXING  
SCHEMATIC

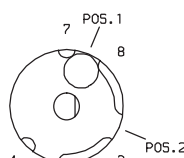


SP MODELS 90° INDEXING			
NO. POLES	MODEL NO.	SWITCH FUNCTION	TERMINALS
SP	<b>HA01</b>	SPDT	7-8-2
	<b>HA05</b>	3 Position	7-8-2-4
	<b>HA55</b>	4 Position No Stops	8-2-4-6

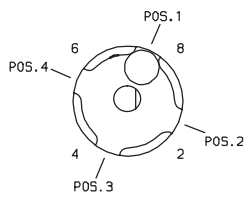
SP MODELS 90° INDEXING  
SCHEMATICS



**HA01**



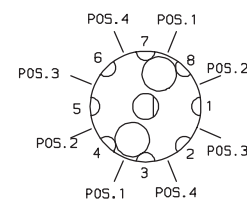
**HA05**



**HA55**

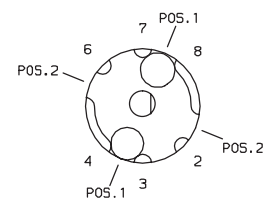
DP MODELS 45° INDEXING			
NO. POLES	MODEL NO.	SWITCH FUNCTION	TERMINALS
DP	<b>H200</b>	4 Position No Stops	All Terminals
	<b>H201</b>	DPST	8-1, 4-5
	<b>H202</b>	DPDT	7-8-1, 3-4-5
	<b>H203</b>	3 Position	All Terminals
	<b>H204</b>	4 Position	All Terminals

DP MODELS 45° INDEXING  
SCHEMATIC



DP MODELS 90° INDEXING			
NO. POLES	MODEL NO.	SWITCH FUNCTION	TERMINALS
DP	<b>HB11</b>	DPDT	7-8-2-3-4-6

DP MODELS 90° INDEXING  
SCHEMATIC



NOTE: Break-before-make contacts. Terminal numbers are molded on bottom of housing. Actuators and contacts are shown in position 1. No common terminal is present. Switching function is provided by movable contacts shorting adjacent pairs of stationary contacts.

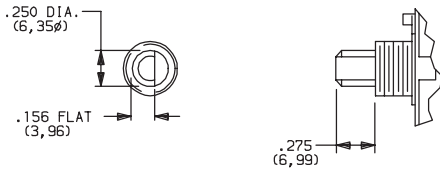
All models with all options.



# C&K H Series Power ROTA-SLIDE® Rotary Switches

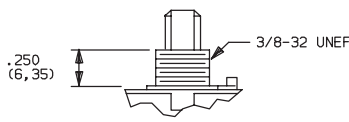
## ACTUATOR

**07** (STD.) .275" HIGH WITH .156" FLAT



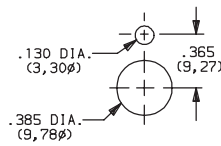
## MOUNTING STYLE

**RR** (STD.) 3/8-32 THREADED BUSHING



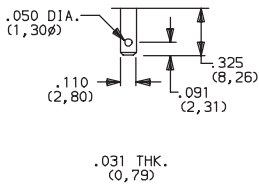
Mounting nut included (part number 175000100).

### PANEL MOUNTING

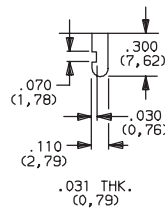


## TERMINATIONS

**05** (STD.) SOLDER LUG WITH HOLE

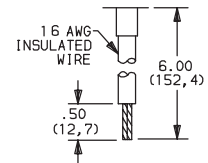


**01** SOLDER LUG WITH NOTCH



Not available on models with 90° indexing.

**WC** WIRE LEAD



Black wire standard, other colors and lengths available, consult Customer Service Center. UL style 1015.

## CONTACT MATERIAL

OPTION CODE	CONTACT AND TERMINAL MATERIAL	RATINGS	
<b>Q</b> (STD.)	SILVER <sup>1</sup>	POWER	12 AMPS @ 125 V AC; 6 AMPS @ 250 V AC; 1 AMP @ 125 V DC.

CONTACT MATERIAL/APPLICATION RECOMMENDATIONS — SEE CHART, PAGE L-31.

<sup>1</sup> CONTACTS & TERMINALS: Copper, silver plated.

All models  with all options.

## SEAL

**NONE** (STD.) NO SEAL

**E** EPOXY SEAL

