

4

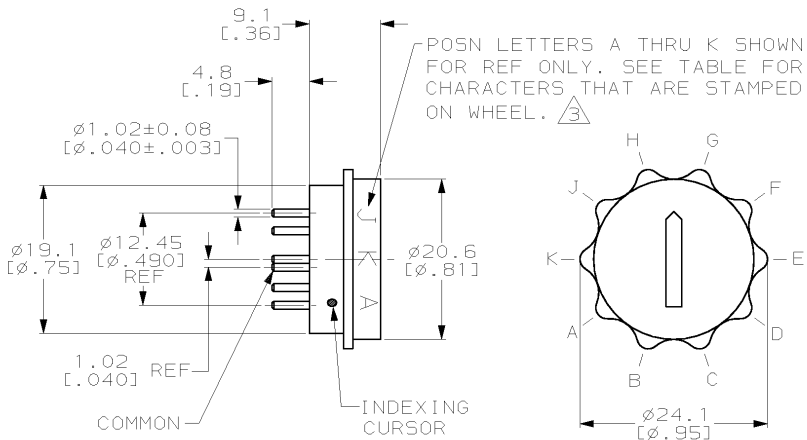
3

2

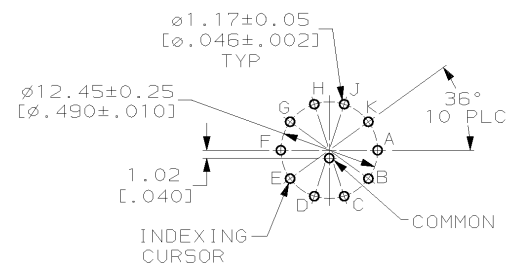
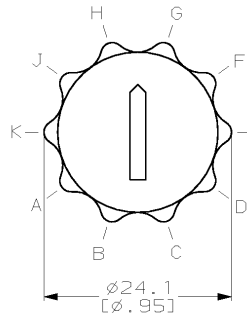
1

THIS DRAWING IS UNPUBLISHED. RELEASED FOR PUBLICATION .19
 © COPYRIGHT 19 BY AMP INCORPORATED. ALL RIGHTS RESERVED.

LOC	DIST	REVISIONS				
P	LTR	DESCRIPTION	DATE	DWN	APVD	
U		REV PER 063C-0156-03	130CT04	JR	MZ	



- 1 MATERIAL; CASE-THERMOPLASTIC, COLOR NATURAL. WHEEL-THERMOPLASTIC, COLOR BLACK. CONTACT-BRASS.
- 2 FINISH: SOLDER TAILS TIN PLATE 0.0038 [.000150] MIN THK OVER 0.0013 [.000050] MIN THK NICKEL. CONTACT AREA 0.00076 [.000030] MIN. HARD GOLD OVER 0.00127-0.00254 [.000050-.000100] LOW STRESS NICKEL.
- 3 CHARACTERS 2.3 [.09] HIGH, COLOR WHITE.



P.C. BOARD HOLE LAYOUT SWITCH SIDE

COMMON TO	POSITION											
	0	1	2	3	4	5	6	7	8	9	10	FOR 435097-2
	0	1	2	3	4	5	6	7	8	9		FOR 435097-1
0	•											
1		•										
2			•									
3				•								
4					•							
5						•						
6							•					
7								•				
8									•			
9										•		

10	9	8	7	6	5	4	3	2	1		435097-2
9	8	7	6	5	4	3	2	1	0		435097-1
K	J	H	G	F	E	D	C	B	A		WHEEL POSN CHARACTERS
										PART NO	

THIS DRAWING IS A CONTROLLED DOCUMENT.

DIMENSIONS: mm (INCHES)	TOLERANCES UNLESS OTHERWISE SPECIFIED:	DWN J. McCLINTON 11-20-80	CHK R. JARRETT 12-1-80	APVD D.W. RUPNIK 7-16-81	NAME ROTARY SWITCH ASSY 10 POSN, 6000 SERIES DECIMAL
				AMP Incorporated Harrisburg, PA 17105-3608	
MATERIAL		FINISH		SIZE CAGE CODE DRAWING NO	
1		2		A3100779 435097	
CUSTOMER DRAWING				RESTRICTED TO	
				SCALE 2:1 SHEET 1 OF 3 REV U	

4

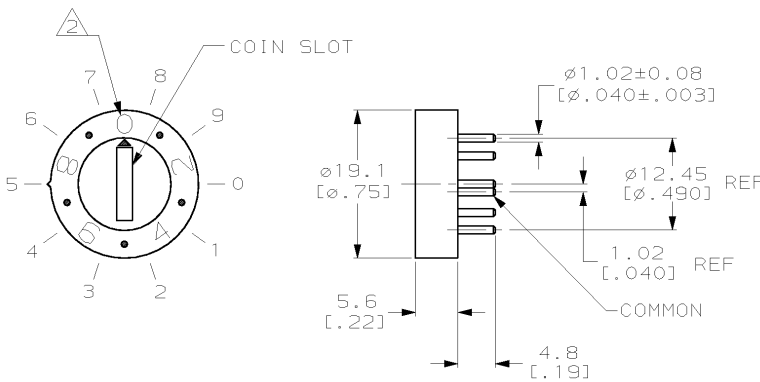
3

2

1

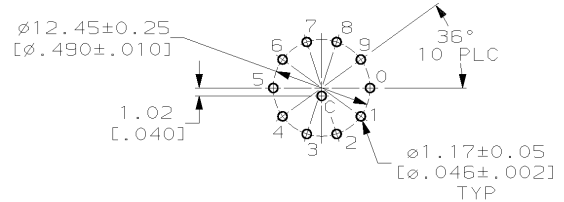
THIS DRAWING IS UNPUBLISHED. RELEASED FOR PUBLICATION .19
 © COPYRIGHT 19 BY AMP INCORPORATED. ALL RIGHTS RESERVED.

LOC	DIST	REVISIONS			
P	LTR	DESCRIPTION	DATE	DWN	APVD
U		SEE SHEET 1	-	-	-



⚠ FINISH: SOLDER TAILS TIN PLATE 0.0038 [0.000150] MIN THK OVER 0.0013 [0.000050] MIN THK NICKEL. CONTACT AREA 0.00076 [0.000030] MIN. HARD GOLD OVER 0.00127-0.00254 [0.000050-.000100] LOW STRESS NICKEL.

⚠ CHARACTERS 2.5 [0.10] HIGH, COLOR BLACK.



P.C. BOARD HOLE LAYOUT
SWITCH SIDE

COMMON TO	POSITION									
	0	1	2	3	4	5	6	7	8	9
0	●									
1		●								
2			●							
3				●						
4					●					
5						●				
6							●			
7								●		
8									●	
9										●

1-435097-1
PART NO

THIS DRAWING IS A CONTROLLED DOCUMENT.		DWN R. TALLEY 8-7-91	AMP AMP Incorporated Harrisburg, PA 17105-3608
DIMENSIONS: mm (INCHES)		CHK R. MILLER 8-7-91	
TOLERANCES UNLESS OTHERWISE SPECIFIED:		APVD D. HUFFMAN 8-9-91	NAME
0 PLC ±-		PRODUCT SPEC	ROTARY SWITCH ASSY,
1 PLC ±-		108-7514	10 POSN, 6000 SERIES
2 PLC ±0.5 (.02)		APPLICATION SPEC	DECIMAL
3 PLC ±-		114-7005	SIZE CAGE CODE DRAWING NO
4 PLC ±-		WEIGHT -	A3100779-435097
ANGLES ±0°30'		CUSTOMER DRAWING	RESTRICTED TO
MATERIAL CASE: THERMOPLASTIC, COLOR NATURAL CONTACT: BRASS		FINISH	SCALE 2:1 SHEET 2 OF 3 REV U

4

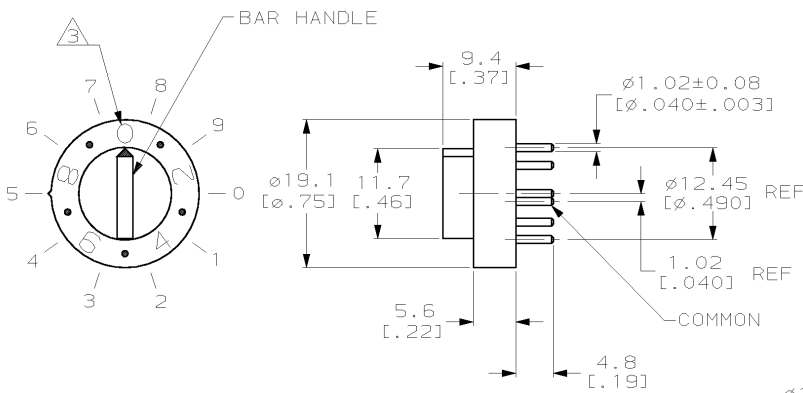
3

2

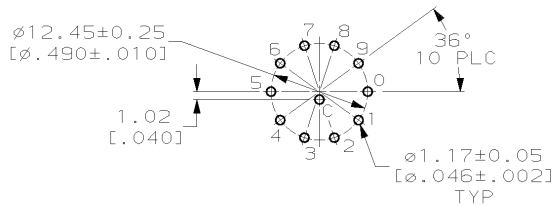
1

THIS DRAWING IS UNPUBLISHED. RELEASED FOR PUBLICATION .19
 © COPYRIGHT 19 BY AMP INCORPORATED. ALL RIGHTS RESERVED.

LOC	DIST	REVISIONS			
P	LTR	DESCRIPTION	DATE	DWN	APVD
U		SEE SHEET 1	-	-	-



- ① FINISH: SOLDER TAILS TIN PLATE 0.0038 [.000150] MIN THK OVER 0.0013 [.000050] MIN THK NICKEL. CONTACT AREA 0.00075 [.000030] MIN. HARD GOLD OVER 0.00127-0.00254 [.000050-.000100] LOW STRESS NICKEL.
- ② FINISH: SOLDER TAILS TIN PLATE 0.0038 [.000150] MIN THK OVER 0.0051 [.000200] MIN THK COPPER. CONTACT AREA 0.00075 [.000030] MIN. HARD GOLD OVER 0.00127-0.00254 [.000050-.000100] LOW STRESS NICKEL.
- ③ CHARACTERS 2.5 [.10] HIGH, COLOR BLACK.



P.C. BOARD HOLE LAYOUT
SWITCH SIDE

		POSITION									
		0	1	2	3	4	5	6	7	8	9
COMMON TO	0	●									
	1		●								
	2			●							
	3				●						
	4					●					
	5						●				
	6							●			
	7								●		
	8									●	
	9										●

SUPERSEDED BY 2-435097-1	FINISH	2-435097-3
		2-435097-1
	PART NO	

THIS DRAWING IS A CONTROLLED DOCUMENT.		DWN R. TALLEY 8-7-91	AMP Incorporated Harrisburg, PA 17105-3608
DIMENSIONS: mm (INCHES)		CHK R. MILLER 8-7-91	
TOLERANCES UNLESS OTHERWISE SPECIFIED:		APVD D. HUFFMAN 8-9-91	NAME ROTARY SWITCH ASSY, 10 POSN, 6000 SERIES DECIMAL
0 PLC ±- 1 PLC ±- 2 PLC ±0.5 (.02) 3 PLC ±- 4 PLC ±- ANGLES ±90°		PRODUCT SPEC 108-7514	SIZE CAGE CODE DRAWING NO A3100779 435097
MATERIAL CASE: THERMOPLASTIC, COLOR NATURAL CONTACT: BRASS		APPLICATION SPEC 114-7005	RESTRICTED TO -
FINISH SEE TABLE		WEIGHT -	CUSTOMER DRAWING
		SCALE 2:1	SHEET 3 OF 3 REV U