

4

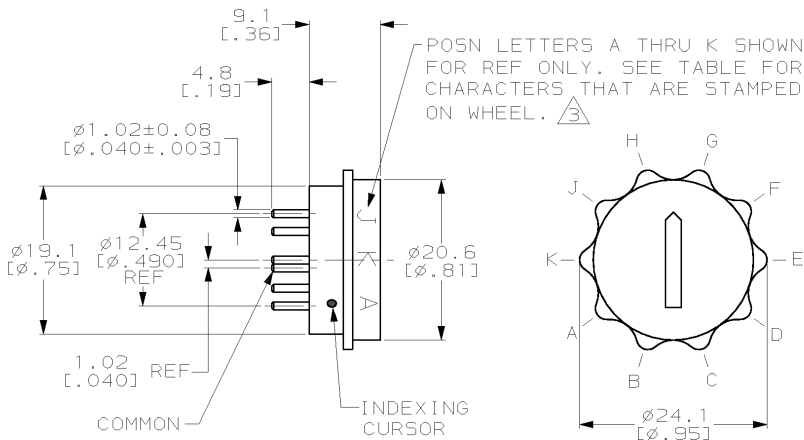
3

2

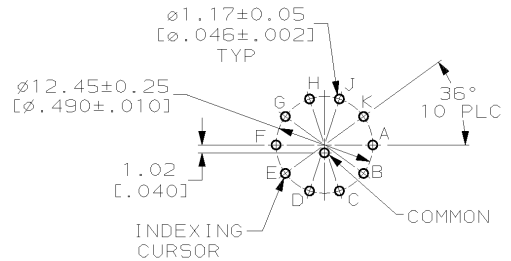
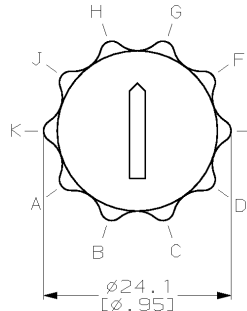
1

THIS DRAWING IS UNPUBLISHED. RELEASED FOR PUBLICATION .19
 © COPYRIGHT 19 BY AMP INCORPORATED. ALL RIGHTS RESERVED.

LOC	DIST	REVISIONS				
P	LTR	DESCRIPTION	DATE	DWN	APVD	
FT	69	T	REV PER EC 0650-0173-98	9-14-98	LM GR	



- 1 MATERIAL; CASE-THERMOPLASTIC, COLOR NATURAL. WHEEL-THERMOPLASTIC, COLOR BLACK. CONTACT-BRASS.
- 2 FINISH: SOLDER TAILS TIN PLATE 0.0038 [.000150] MIN THK OVER 0.0013 [.000050] MIN THK NICKEL. CONTACT AREA 0.00076 [.000030] MIN. HARD GOLD OVER 0.00127-0.00254 [.000050-.000100] LOW STRESS NICKEL.
- 3 CHARACTERS 2.3 [.09] HIGH, COLOR WHITE.



P.C. BOARD HOLE LAYOUT SWITCH SIDE

COMMON TO	POSITION									
	1	2	3	4	5	6	7	8	9	10
	0	•								
1		•								
2			•							
3				•						
4					•					
5						•				
6							•			
7								•		
8									•	
9										•

FOR 435097-2
FOR 435097-1

10	9	8	7	6	5	4	3	2	1	435097-2
9	8	7	6	5	4	3	2	1	0	435097-1
K	J	H	G	F	E	D	C	B	A	WHEEL POSN CHARACTERS
										PART NO

THIS DRAWING IS A CONTROLLED DOCUMENT.		DWN J. McCLINTON 11-20-80	AMP	AMP Incorporated Harrisburg, PA 17105-3608
DIMENSIONS: mm (INCHES)	TOLERANCES UNLESS OTHERWISE SPECIFIED:	CHK R. JARRETT 12-1-80	AMP ROTARY SWITCH ASSY 10 POSN, 6000 SERIES DECIMAL	
	0 PLC ± 1 PLC ± 2 PLC ±0.5 (.02) 3 PLC ± 4 PLC ± ANGLES ±0°30'	APVD D.W. RUPNIK 7-16-81		
MATERIAL	FINISH	NAME D.W. RUPNIK	PRODUCT SPEC 108-7514	RESTRICTED TO
		APPLICATION SPEC 114-7005	SIZE A3	CAGE CODE 00779
		WEIGHT -	DRAWING NO C-435097	REV T
CUSTOMER DRAWING			SCALE 2:1	SHEET 1 OF 3

4

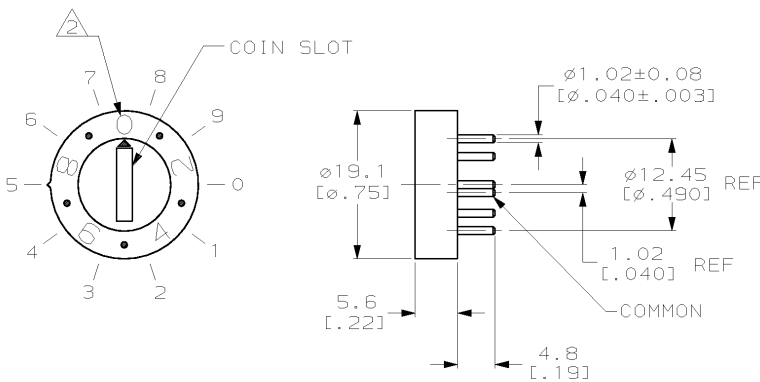
3

2

1

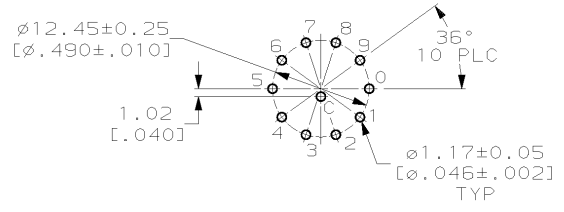
THIS DRAWING IS UNPUBLISHED. RELEASED FOR PUBLICATION .19
 © COPYRIGHT 19 BY AMP INCORPORATED. ALL RIGHTS RESERVED.

LOC	DIST	REVISIONS			
P	LTR	DESCRIPTION	DATE	DWN	APVO
FT	69	T SEE SHEET 1	-	-	-



1 FINISH: SOLDER TAILS TIN PLATE 0.0038 [0.00150] MIN THK OVER 0.0013 [0.00050] MIN THK NICKEL. CONTACT AREA 0.00076 [0.00030] MIN. HARD GOLD OVER 0.00127-0.00254 [0.00050-.000100] LOW STRESS NICKEL.

2 CHARACTERS 2.5 [0.10] HIGH, COLOR BLACK.



P.C. BOARD HOLE LAYOUT SWITCH SIDE

COMMON TO	POSITION									
	0	1	2	3	4	5	6	7	8	9
0	●									
1		●								
2			●							
3				●						
4					●					
5						●				
6							●			
7								●		
8									●	
9										●

1-435097-1
PART NO

THIS DRAWING IS A CONTROLLED DOCUMENT.		DWN R. TALLEY 8-7-91	AMP AMP Incorporated Harrisburg, PA 17105-3608	NAME ROTARY SWITCH ASSY, 10 POSN, 6000 SERIES DECIMAL	
DIMENSIONS: mm (INCHES)	TOLERANCES UNLESS OTHERWISE SPECIFIED:	CHK R. MILLER 8-7-91		PRODUCT SPEC 108-7514	SIZE A3
	0 PLC ±-	APVO D. HUFFMAN 8-9-91	APPLICATION SPEC 114-7005	DRAWING NO C-435097	RESTRICTED TO -
MATERIAL CASE: THERMOPLASTIC, COLOR NATURAL CONTACT: BRASS	FINISH 1	WEIGHT -	CUSTOMER DRAWING	SCALE 2:1	SHEET 2 OF 3

4

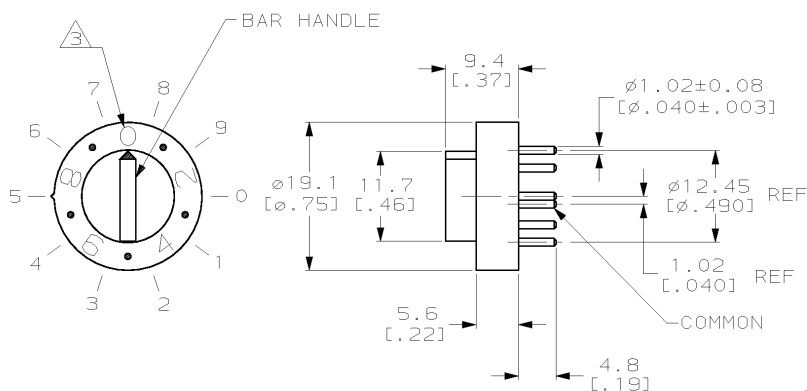
3

2

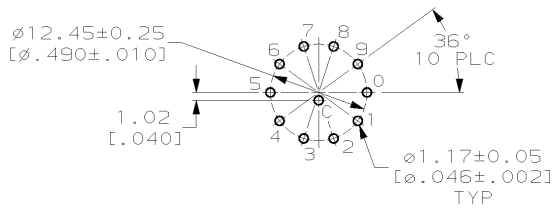
1

THIS DRAWING IS UNPUBLISHED. RELEASED FOR PUBLICATION .19
 © COPYRIGHT 19 BY AMP INCORPORATED. ALL RIGHTS RESERVED.

LOC	DIST	REVISIONS				
P	LTR	DESCRIPTION	DATE	DWN	APVD	
FT	69	T SEE SHEET 1	-	-	-	



- ① FINISH: SOLDER TAILS TIN PLATE 0.0038 [.000150] MIN THK OVER 0.0013 [.000050] MIN THK NICKEL. CONTACT AREA 0.00076 [.000030] MIN. HARD GOLD OVER 0.00127-0.00254 [.000050-.000100] LOW STRESS NICKEL.
- ② FINISH: SOLDER TAILS TIN PLATE 0.0038 [.000150] MIN THK OVER 0.0051 [.000200] MIN THK COPPER. CONTACT AREA 0.00076 [.000030] MIN. HARD GOLD OVER 0.00127-0.00254 [.000050-.000100] LOW STRESS NICKEL.
- ③ CHARACTERS 2.5 [.10] HIGH, COLOR BLACK.



P.C. BOARD HOLE LAYOUT
SWITCH SIDE

		POSITION									
		0	1	2	3	4	5	6	7	8	9
COMMON TO	0	●									
	1		●								
	2			●							
	3				●						
	4					●					
	5						●				
	6							●			
	7								●		
	8									●	
	9										●

①	2-435097-3
②	2-435097-1
FINISH	PART NO

THIS DRAWING IS A CONTROLLED DOCUMENT.		DWN R. TALLEY 8-7-91	AMP AMP Incorporated Harrisburg, PA 17105-3608
		CHK R. MILLER 8-7-91	
DIMENSIONS: mm (INCHES)		APVD D. HUFFMAN 8-9-91	NAME ROTARY SWITCH ASSY, 10 POSN, 6000 SERIES DECIMAL
TOLERANCES UNLESS OTHERWISE SPECIFIED: 0 PLC ±- 1 PLC ±- 2 PLC ±0.5 (.02) 3 PLC ±- 4 PLC ±- ANGLES ±0°30'		PRODUCT SPEC 108-7514	RESTRICTED TO
MATERIAL CASE: THERMOPLASTIC, COLOR NATURAL CONTACT: BRASS		APPLICATION SPEC 114-7005	SIZE CAGE CODE DRAWING NO A3100779 C- 435097
FINISH SEE TABLE		WEIGHT -	SCALE 2:1 SHEET 3 OF 3 REV T
		CUSTOMER DRAWING	