

4

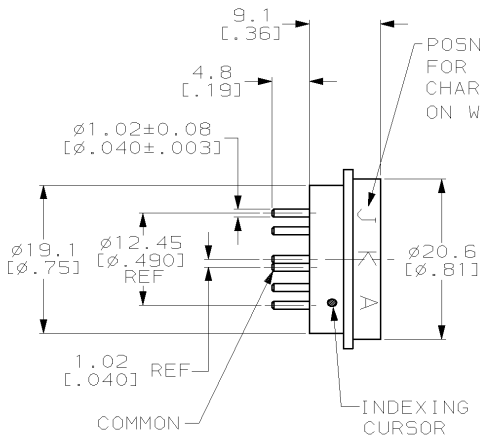
3

2

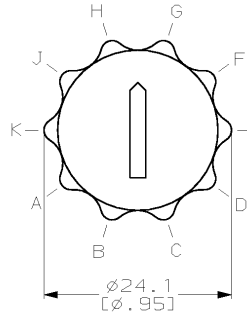
1

THIS DRAWING IS UNPUBLISHED. RELEASED FOR PUBLICATION .19  
 © COPYRIGHT 19 BY AMP INCORPORATED. ALL RIGHTS RESERVED.

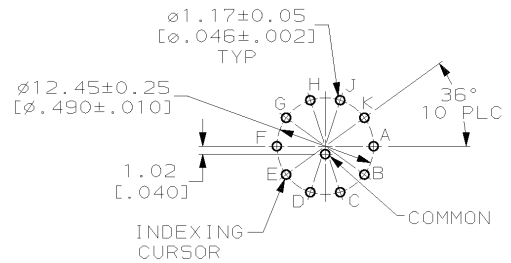
LOC	DIST	REVISIONS				
P	LTR	DESCRIPTION	DATE	DWN	APVD	
U		REV PER 063C-0156-03	130CT04	JR	MZ	



POSN LETTERS A THRU K SHOWN FOR REF ONLY. SEE TABLE FOR CHARACTERS THAT ARE STAMPED ON WHEEL. ③



- ① MATERIAL; CASE-THERMOPLASTIC, COLOR NATURAL. WHEEL-THERMOPLASTIC, COLOR BLACK. CONTACT-BRASS.
- ② FINISH: SOLDER TAILS TIN PLATE 0.0038 [.000150] MIN THK OVER 0.0013 [.000050] MIN THK NICKEL. CONTACT AREA 0.00076 [.000030] MIN. HARD GOLD OVER 0.00127-0.00254 [.000050-.000100] LOW STRESS NICKEL.
- ③ CHARACTERS 2.3 [.09] HIGH, COLOR WHITE.



P.C. BOARD HOLE LAYOUT SWITCH SIDE

COMMON TO	POSITION										
	1	2	3	4	5	6	7	8	9	10	FOR 435097-2
	0	1	2	3	4	5	6	7	8	9	FOR 435097-1
0	●										
1		●									
2			●								
3				●							
4					●						
5						●					
6							●				
7								●			
8									●		
9										●	

10	9	8	7	6	5	4	3	2	1	435097-2
9	8	7	6	5	4	3	2	1	0	435097-1
K	J	H	G	F	E	D	C	B	A	WHEEL POSN CHARACTERS
										PART NO

THIS DRAWING IS A CONTROLLED DOCUMENT.

DIMENSIONS: mm (INCHES)	TOLERANCES UNLESS OTHERWISE SPECIFIED:	DWN J. McCLINTON 11-20-80	CHK R. JARRETT 12-1-80	APVD D.W. RUPNIK 7-16-81	NAME AMP Incorporated Harrisburg, PA 17105-3608
	0 PLC ±- 1 PLC ±- 2 PLC ±0.5 (.02) 3 PLC ±- 4 PLC ±- ANGLES ±0°30'	PRODUCT SPEC 108-7514	ROTARY SWITCH ASSY 10 POSN, 6000 SERIES DECIMAL		
MATERIAL	FINISH	APPLICATION SPEC 114-7005	SIZE A3	CAGE CODE 00779	DRAWING NO 435097
①	②	WEIGHT -	RESTRICTED TO -		
CUSTOMER DRAWING			SCALE 2:1	SHEET 1 OF 3	REV U

4

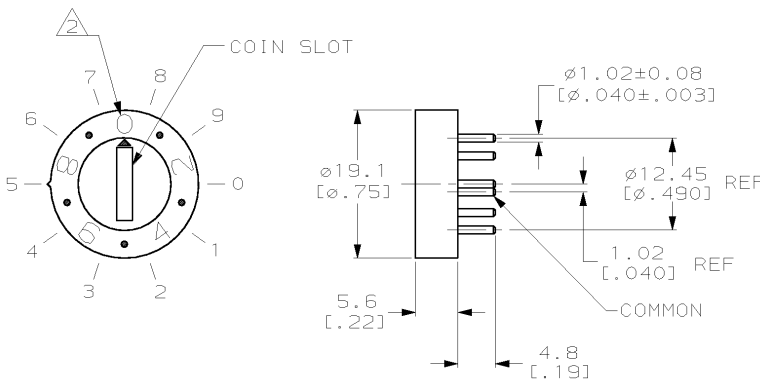
3

2

1

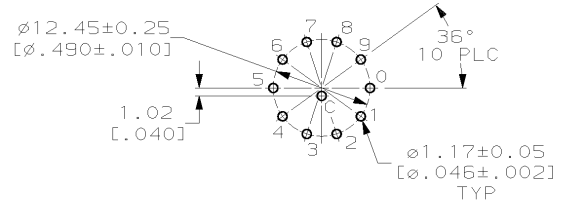
THIS DRAWING IS UNPUBLISHED. RELEASED FOR PUBLICATION  
 © COPYRIGHT 19 BY AMP INCORPORATED. ALL RIGHTS RESERVED.

LOC	DIST	REVISIONS			
P	LTR	DESCRIPTION	DATE	DWN	APVD
U		SEE SHEET 1	-	-	-



⚠ FINISH: SOLDER TAILS TIN PLATE 0.0038 [0.000150] MIN THK OVER 0.0013 [0.000050] MIN THK NICKEL. CONTACT AREA 0.00076 [0.000030] MIN. HARD GOLD OVER 0.00127-0.00254 [0.000050-.000100] LOW STRESS NICKEL.

⚠ CHARACTERS 2.5 [0.10] HIGH, COLOR BLACK.



P.C. BOARD HOLE LAYOUT  
SWITCH SIDE

COMMON TO	POSITION									
	0	1	2	3	4	5	6	7	8	9
0	●									
1		●								
2			●							
3				●						
4					●					
5						●				
6							●			
7								●		
8									●	
9										●

1-435097-1  
PART NO

THIS DRAWING IS A CONTROLLED DOCUMENT.		DWN R. TALLEY 8-7-91	<b>AMP</b> AMP Incorporated Harrisburg, PA 17105-3608	NAME ROTARY SWITCH ASSY, 10 POSN, 6000 SERIES DECIMAL
DIMENSIONS: mm (INCHES)	TOLERANCES UNLESS OTHERWISE SPECIFIED:	CHK R. MILLER 8-7-91		
0 PLC ±-	0 PLC ±-	APVD D. HUFFMAN 8-9-91	PRODUCT SPEC 108-7514	
1 PLC ±-	1 PLC ±-		APPLICATION SPEC 114-7005	
2 PLC ±0.5 (0.02)	2 PLC ±-		SIZE A3	CAGE CODE 00779
3 PLC ±-	3 PLC ±-		DRAWING NO 435097	RESTRICTED TO -
4 PLC ±-	4 PLC ±-		SCALE 2:1	SHEET 2 OF 3
ANGLES ±0°30'	FINISH ⚠		CUSTOMER DRAWING	REV U

