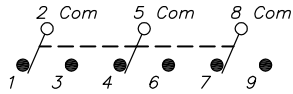


RECOMMENDED PANEL MOUNTING



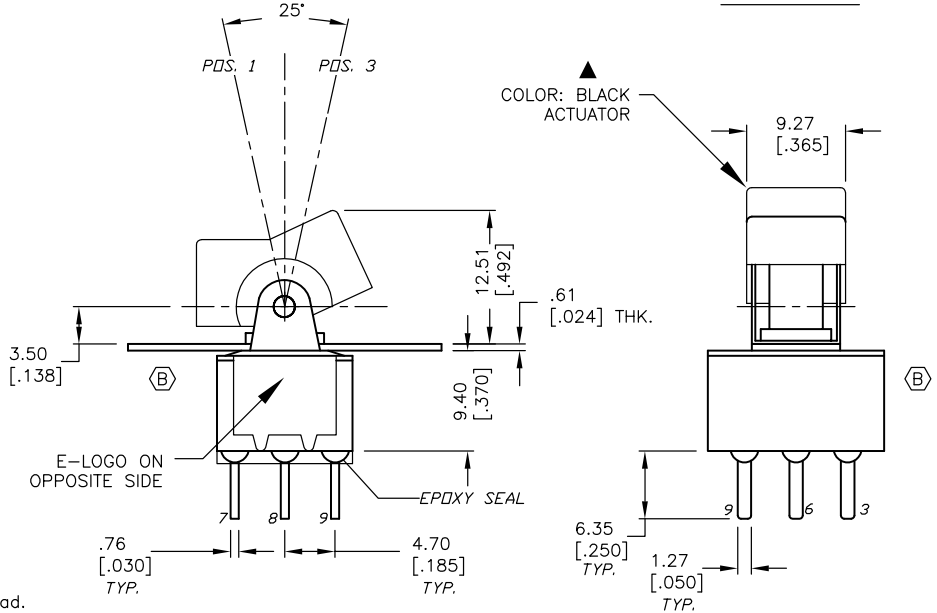
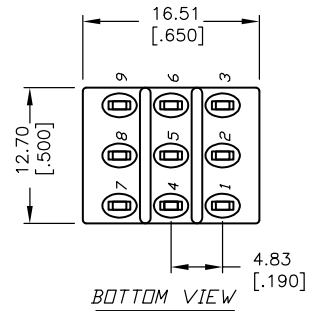
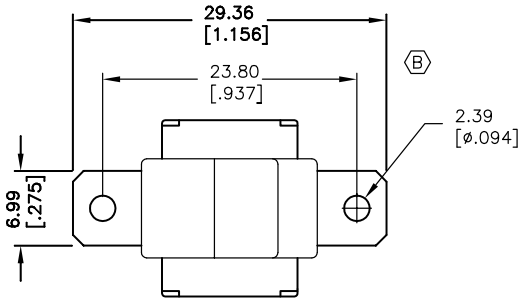
CIRCUIT: 3PDT

SWITCH FUNCTION		
PDS. 1	PDS. 2	PDS. 3
DN	OFF	<DN>
2-3,5-6,8-9	OPEN	2-1,5-4,8-7

< >=MOMENTARY

NOTES:

- ALL DIMENSIONS IN MM [INCH]
- GENERAL TOLERANCE: X.X=±0.4;
X.XX=±0.25
- TERM. NOS. FOR REF. ONLY
- RATING: 0.4VA @20V AC or DC max.
- CONTACT MATERIAL: Copper Alloy w/GOLD plating over Nickel plate.
- ELECTRICAL LIFE:
50,000 make-and-break cycles at full load.
- INSULATION RESISTANCE: 1,000M ohm min.
- DIELECTRIC STRENGTH: 1,000 V RMS @sea level
- OPERATION TEMP.: -30°C to +85°C
- ▲ DENOTES CRITICAL PARAMETER.



REV.	ECN No.	DESCRIPTION	DATE	CHKD
B	13412	CORRECT TERMINATION	8/29/03	AR
A	13155	RELEASED FOR PRODUCTION	5/23/03	AR

THE INFORMATION CONTAINED IN THIS DOCUMENT IS PROPRIETARY TO E-SWITCH AND IS NOT TO BE COPIED OR TRANSFERRED

E-SWITCH®

TITLE
3003P5J1BLKM2RE

SCALE 2:1	DATE 5/23/03	DR AR	DWG T335001	REV B
---------------------	------------------------	-----------------	-----------------------	-----------------