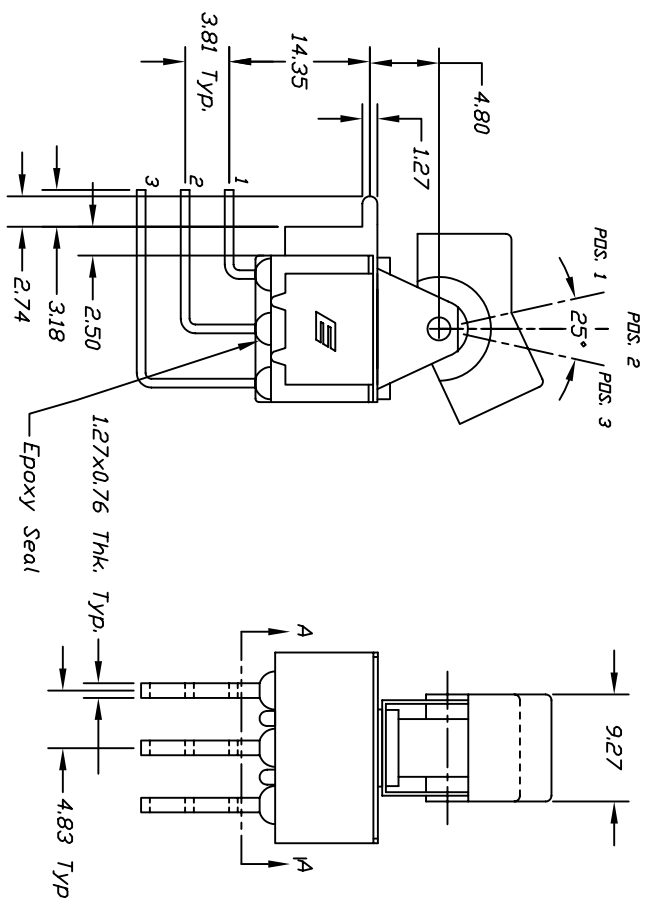
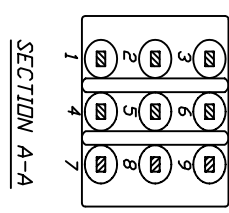
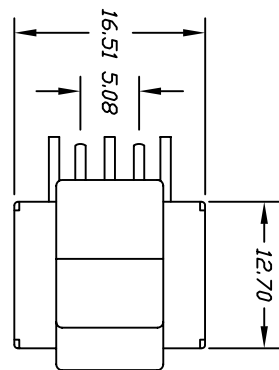


CIRCUIT: 3PDT

CONTACT CONFIGURATION			
SWITCH FUNCTION	POS. 1	POS. 2	POS. 3
DN	DN	DN	DN
2-3-5-6	DN	DN	DN
8-9	OPEN	OPEN	OPEN
	2-1,5-4	8-7	

- NOTES:
1. ALL DIMENSIONS IN MM
 2. TERMINAL NUMBERS FOR REF ONLY
 3. PLATING MATERIAL, SILVER
 4. RATING: 2A @250VAC, 5A @120VAC DR 28VDC
 5. ELECTRIC LIFE: 40,000 MAKE-AND-BREAK CYCLES AT FULL LOAD
 6. INSULATION RESISTANCE: 1,000 MEGA-OHM MIN.
 7. DIELECTRIC STRENGTH: 1,000 V RMS @SEA LEVEL.
 8. OPERATING TEMP:-30°C to 85°C
 10. ▲ DENOTES CRITICAL PARAMETER.



REV.	ECN NO.	DESCRIPTION	DATE	CHKD
B	15140	REVISED/ADD NOTES 4-10	8/5/05	PV
A		RELEASED FOR PRODUCTION		

E SWITCH®

300 3P1 J1 M7 Q E

TOLERANCES

±0.4	±0.25
0.0	0.00

TITLE: 300 3P1 J1 M7 Q E

SCALE: 2:1

DATE: 6/1/98

DR: MM

DWG: T331006

REV: B

THE INFORMATION CONTAINED IN THIS DOCUMENT IS UNCLASSIFIED EXCEPT WHERE SHOWN OTHERWISE AND IS NOT TO BE RELEASED OR TRANSMITTED