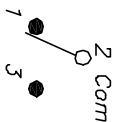
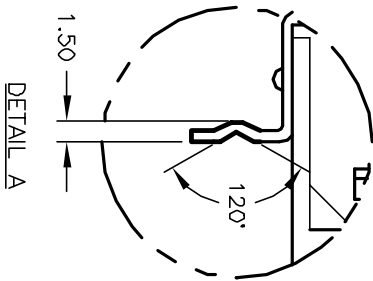


RECOMMENDED P.C.B. LAYOUT

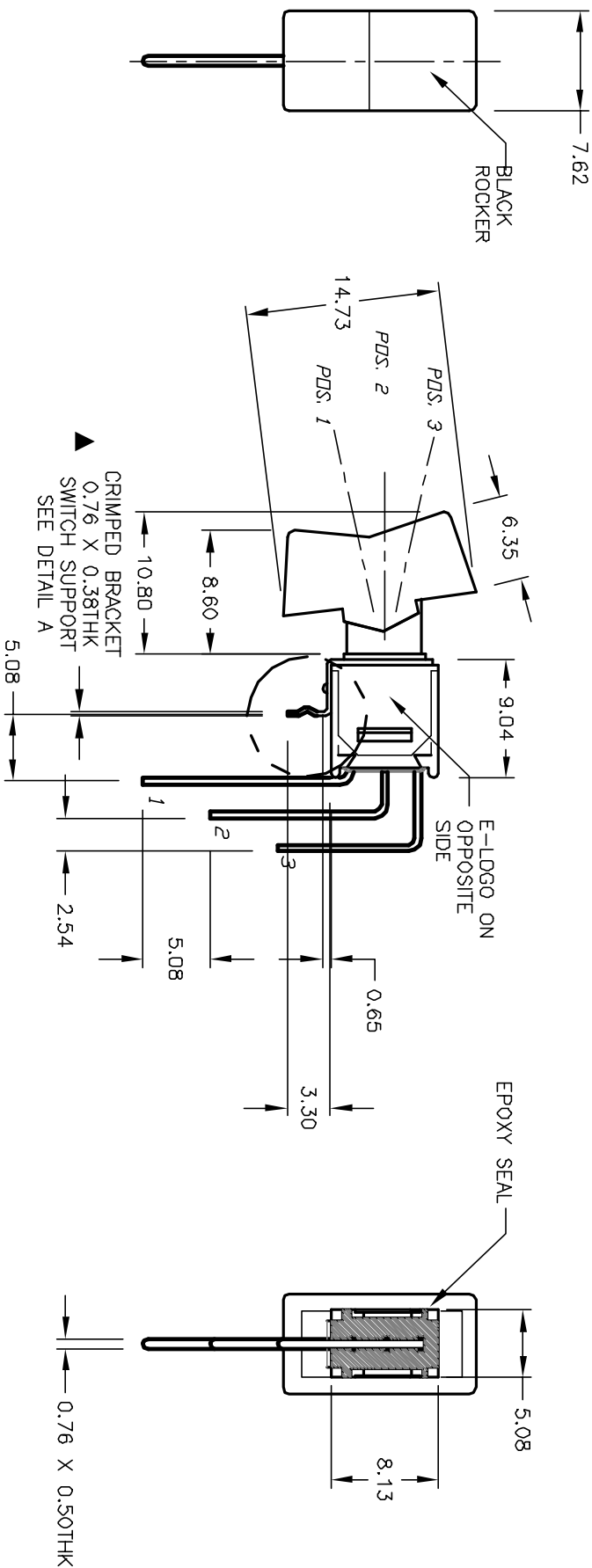


CIRCUIT: SPDT
CONTACT CONFIGURATION

SWITCH FUNCTION		
PDS. 1	PDS. 2	PDS. 3
DN	NONE	DN
2-3	OPEN	2-1

NOTES:

- ALL DIMENSIONS IN MM
- GENERAL TOLERANCE: X.X=±0.4
X.XX=±0.25
- TERM. NOS. FOR REF. ONLY
- RATING: 3A @120VAC, OR 28VDC
1A @250VAC
- FIXED TERMINAL/MOVING CONTACT MATERIAL:
COPPER ALLOY w/SILVER PLATING
- ELECTRIC LIFE: 30,000 make-and-break cycles
at full load.
- INSULATION RESISTANCE: 1,000 M ohm min.
- DIELECTRIC STRENGTH: 1,000 V RMS @sea level.
- OPERATING TEMP. -30°C to +85°C
- ▲ DESIGNATE MAJOR FEATURE



A		12275	RELEASED	6/27/02	CJB	TITLE		400 MSP-1 R1 (BLK) M71 QE
REV.	ECN NO.	DESCRIPTION		DATE	CHKD	SCALE	DATE	DR
		THE INFORMATION CONTAINED IN THIS DOCUMENT IS PROPRIETARY TO E-SWITCH AND IS NOT TO BE COPIED OR TRANSMITTED				2:1	6/27/02	CJB
								DWG
								T411113
								REV
								A

E-SWITCH®