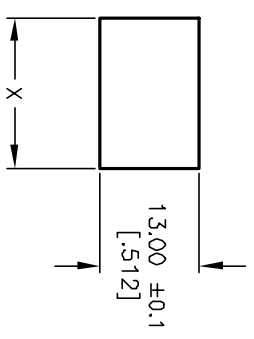


INCANDESCENT BULB

| PARAMETERS | SYMBOL | MAX. | UNITS |
|----------------------|----------------|------|-------|
| LAMP VOLTAGE (AC/DC) | V | 6 | V |
| POWER DISSIPATION | P _d | 2 | Watts |
| CURRENT | I | 200 | mA |



- NOTES:
1. ALL DIMENSIONS IN MM [INCH]
 2. GENERAL TOLERANCE: X.X=±0.4
X.XX=±0.25
 3. RATING: 6A @250VAC;9A @125VAC (UL, CSA)
4(1)A @250VAC (VDE, SEMEKO, NEMKO, FIMKO, DEMKO)
 4. CONTACT RESISTANCE: 20MILLIOHMS TYP. INITIAL
 5. INSULATION RESISTANCE: 1000Megohms
 6. DIELECTRICAL STRENGTHS 1500V RMS min. @SEA LEVEL
3000V RMS @SEA LEVEL
 7. MECHANICAL LIFE: 50,000 CYCLES.
 8. ELECTRICAL LIFE: 10,000 CYCLES.

RECOMMENDED PANEL MOUNTING

| PANEL THICKNESS | X |
|-----------------------|-------------|
| 0.75-1.25 [.030-.049] | 19.2 [.756] |
| 1.25-2.0 [.049-.079] | 19.4 [.764] |
| 2.0-3.0 [.079-.118] | 19.8 [.780] |

| | | | | | | | | | |
|--|---------|-------------------------|---------|------|-----------------|---------|----|---------|-----|
| REV. | ECN No. | DESCRIPTION | DATE | CHKD | SCALE | DATE | DR | DWG | REV |
| A | 12949 | RELEASED FOR PRODUCTION | 3/24/03 | AR | 1.5:1 | 3/24/03 | AR | M400059 | A |
| TITLE | | | | | R1973ABLKDRGER6 | | | | |
| THE INFORMATION CONTAINED IN THIS DOCUMENT IS PROPRIETARY TO E-SWITCH AND IS NOT TO BE COPIED OR TRANSFERRED | | | | | E-SWITCH® | | | | |