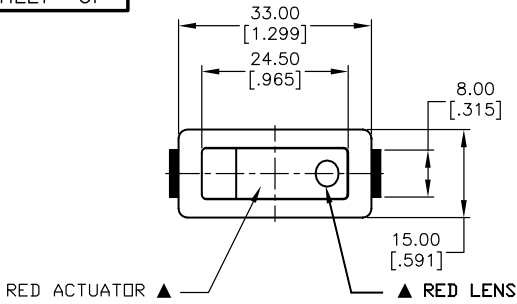
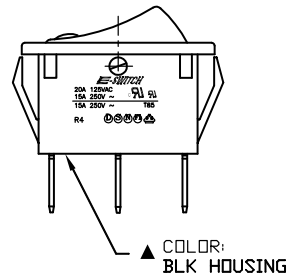
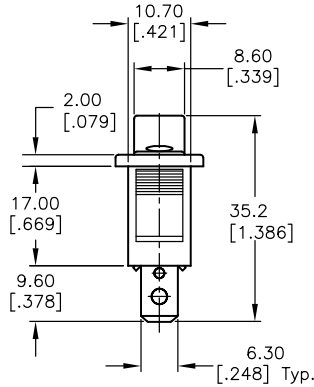
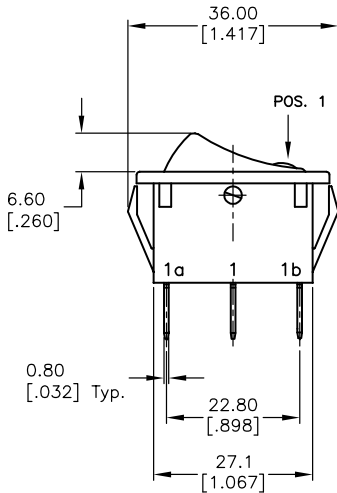
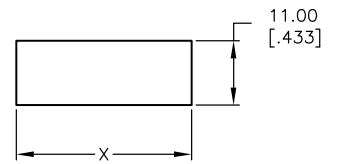


SHEET OF



PANEL THICKNESS	X
0.75~1.25	30.0
1.25~2.00	30.2
2.00~3.00	30.6



CIRCUIT: SPST
CONTACT CONFIGURATION

SWITCH FUNCTION	
POS. 1	POS. 2
ON-ILLUMINATED	OFF
1-1a	OPEN

NOTES:

1. ALL DIMENSIONS IN MM [INCH]
2. GENERAL TOLERANCE: X.X=±0.4
X.XX=±0.25
3. TERM. NOS. FOR REF. ONLY
4. RATING: 15A 250V, 20A 125V AC
5. MATERIAL: Body & Rocker: Nylon 6/6 UL94 V-2
6. LAMP VOLTAGE: 24VDC (Incandescent bulb)
7. ▲ DENOTES CRITICAL PARAMETER

E-SWITCH®

B	13846	CORRECT ACTUATOR/LENS NOTES	3/18/04	AR
A	13788	RELEASED FOR PRODUCTION	2/19/04	AR
REV.	ECN No.	DESCRIPTION	DATE	CHKD

TITLE				
R4BBLKREDREDEF4				
SCALE	DATE	DR	DWG	REV
1:1	2/19/04	AR	M401127	B

THE INFORMATION CONTAINED IN THIS DOCUMENT IS PROPRIETARY TO E-SWITCH AND IS NOT TO BE COPIED OR TRANSFERRED