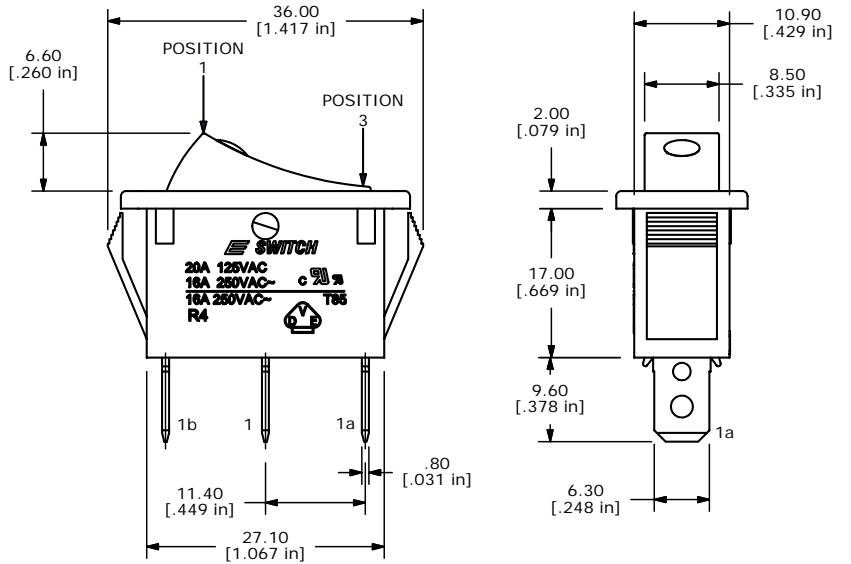


SWITCH FUNCTION		
POS. 1	POS. 2	POS. 3
ON	N/A	OFF-ILL
1-1a	NONE	OPEN



- NOTES:
- ALL DIMENSIONS IN MM [INCH]
  - GENERAL TOLERANCE: X.XX=±0.4  
X.XX=±0.25
  - TERM. NOS. FOR REF. ONLY
  - RATING: 20A 125VAC, 16A 250VAC UL APPROVED  
16A 250VAC VDE APPROVED
  - MECHANICAL LIFE: > 30,000 CYCLES
  - ELECTRICAL LIFE: < 20mOHMS (INITIAL)
  - DIELECTRIC STRENGTH: > 1500V 1 min
  - OPERATING TEMPERATURE: TERMINAL SIDE: -20°C to 85°C  
ROCKER SIDE: -20°C to 55°C
  - FLAMABILITY: UL94 V-2
  - LAMP VOLTAGE: 125VAC NEON BULB
  - ▲ DENOTES CRITICAL PARAMETER.
  - 2002/95/EC (ROHS) COMPLIANT

REV	PCR NO	DESCRIPTION	DATE	BY
F	15994	UPDATE NOTES AND DIMS	5/01/06	CT
E	15811	CHANGES NOTED	2/23/06	PH
D	15791	REVISE AND REDRAWN	2/20/06	PH

**E-SWITCH®**

TITLE R4BBLKBLKYELEF1

SCALE 1:1	DATE 7/22/2002	DR MM	DWG M040104	REV F
-----------	----------------	-------	-------------	-------

THE INFORMATION CONTAINED IN THIS DOCUMENT IS PROPRIETARY TO E-SWITCH AND IS NOT TO BE COPIED OR TRANSFERRED