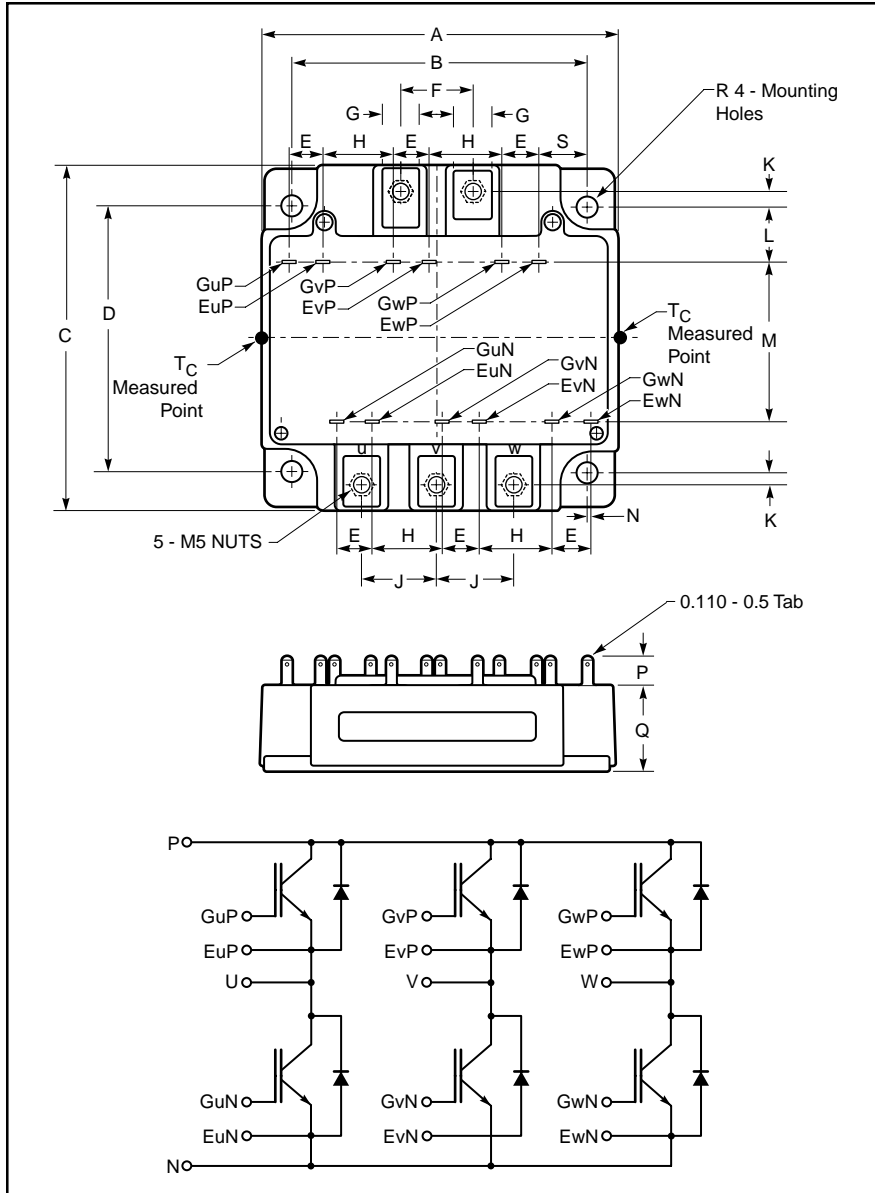


### Trench Gate Design Six IGBTMOD™ 200 Amperes/250 Volts



Outline Drawing and Circuit Diagram

Dimensions	Inches	Millimeters
A	4.21	107.0
B	3.54±0.01	90.0±0.25
C	4.02	102.0
D	3.15±0.01	80.0±0.25
E	0.43	11.0
F	0.91	23.0
G	0.47	12.0
H	0.85	21.7
J	0.91	23.0

Dimensions	Inches	Millimeters
K	0.15	3.75
L	0.67	17.0
M	1.91	48.5
N	0.03	0.8
P	0.32	8.1
Q	1.02	26.0
R	0.22 Dia.	5.5 Dia.
S	0.57	14.4



#### Description:

Powerex IGBTMOD™ Modules are designed for use in switching applications. Each module consists of six IGBT Transistors in a three phase bridge configuration, with each transistor having a reverse-connected super-fast recovery free-wheel diode. All components and interconnects are isolated from the heat sinking baseplate, offering simplified system assembly and thermal management.

#### Features:

- Low Drive Power
- Low  $V_{CE(sat)}$
- Discrete Super-Fast Recovery Free-Wheel Diode
- Isolated Baseplate for Easy Heat Sinking

#### Applications:

- AC Motor Control
- UPS
- Battery Powered Supplies

#### Ordering Information:

Example: Select the complete module number you desire from the table - i.e. CM200TU-5F is a 250V ( $V_{CES}$ ), 200 Ampere Six-IGBT IGBTMOD™ Power Module.

Type	Current Rating Amperes	$V_{CES}$ Volts (x 50)
CM	200	5

**CM200TU-5F**  
**Trench Gate Design Six IGBTMOD™**  
 200 Amperes/250 Volts

**Absolute Maximum Ratings,  $T_j = 25\text{ °C}$  unless otherwise specified**

Ratings	Symbol	CM200TU-5F	Units
Junction Temperature	$T_j$	-40 to 150	°C
Storage Temperature	$T_{stg}$	-40 to 125	°C
Collector-Emitter Voltage (G-E SHORT)	$V_{CES}$	250	Volts
Gate-Emitter Voltage (C-E SHORT)	$V_{GES}$	±20	Volts
Collector Current ( $T_c = 25\text{ °C}$ )	$I_C$	200	Amperes
Peak Collector Current ( $T_j \leq 150\text{ °C}$ )	$I_{CM}$	400*	Amperes
Emitter Current**	$I_E$	200	Amperes
Peak Emitter Current**	$I_{EM}$	400*	Amperes
Maximum Collector Dissipation ( $T_j < 150\text{ °C}$ )	$P_c$	600	Watts
Mounting Torque, M5 Main Terminal	–	31	in-lb
Mounting Torque, M5 Mounting	–	31	in-lb
Weight	–	680	Grams
Isolation Voltage (Main Terminal to Baseplate, AC 1 min.)	$V_{iso}$	2500	Volts

**Static Electrical Characteristics,  $T_j = 25\text{ °C}$  unless otherwise specified**

Characteristics	Symbol	Test Conditions	Min.	Typ.	Max.	Units
Collector-Cutoff Current	$I_{CES}$	$V_{CE} = V_{CES}, V_{GE} = 0V$	–	–	1	mA
Gate Leakage Voltage	$I_{GES}$	$V_{GE} = V_{CES}, V_{CE} = 0V$	–	–	0.5	μA
Gate-Emitter Threshold Voltage	$V_{GE(th)}$	$I_C = 20mA, V_{CE} = 10V$	3.0	4.0	5.0	Volts
Collector-Emitter Saturation Voltage	$V_{CE(sat)}$	$I_C = 200A, V_{GE} = 10V, T_j = 25\text{ °C}$	–	1.2	1.7	Volts
		$I_C = 200A, V_{GE} = 10V, T_j = 125\text{ °C}$	–	1.1	–	Volts
Total Gate Charge	$Q_G$	$V_{CC} = 100V, I_C = 200A, V_{GE} = 10V$	–	–	–	nC
Emitter-Collector Voltage**	$V_{EC}$	$I_E = 200A, V_{GE} = 0V$	–	–	2.0	Volts

**Dynamic Electrical Characteristics,  $T_j = 25\text{ °C}$  unless otherwise specified**

Characteristics	Symbol	Test Conditions	Min.	Typ.	Max.	Units	
Input Capacitance	$C_{ies}$		–	–	66	nf	
Output Capacitance	$C_{oes}$	$V_{CE} = 10V, V_{GE} = 0V$	–	–	3.0	nf	
Reverse Transfer Capacitance	$C_{res}$		–	–	2.3	nf	
Resistive	Turn-on Delay Time	$t_{d(on)}$	$V_{CC} = 100V, I_C = 200A,$	–	–	700	ns
Load	Rise Time	$t_r$	$V_{GE1} = V_{GE2} = 10V,$	–	–	1800	ns
Switch	Turn-off Delay Time	$t_{d(off)}$	$R_G = 13\Omega,$ Resistive	–	–	700	ns
Times	Fall Time	$t_f$	Load Switching Operation	–	–	500	ns
Diode Reverse Recovery Time**	$t_{rr}$	$I_E = 200A, di_E/dt = -400A/\mu s$	–	–	300	ns	
Diode Reverse Recovery Charge**	$Q_{rr}$	$I_E = 200A, di_E/dt = -400A/\mu s$	–	–	–	μC	

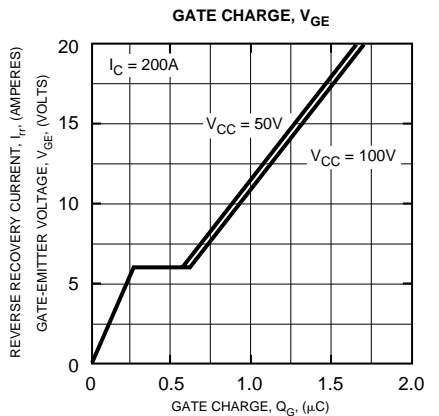
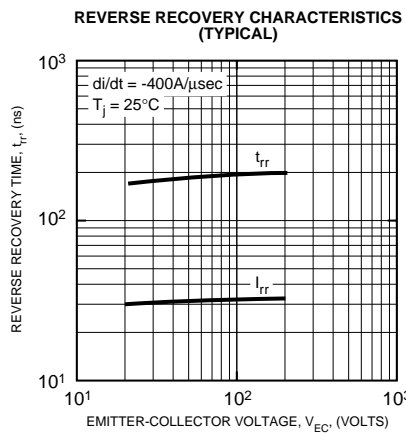
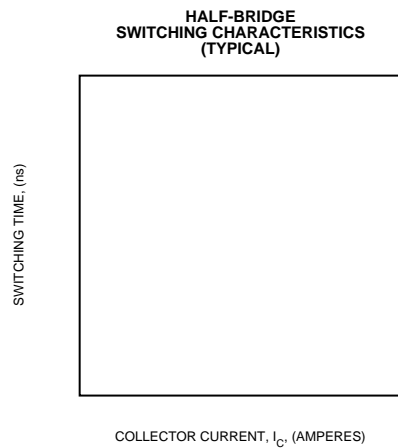
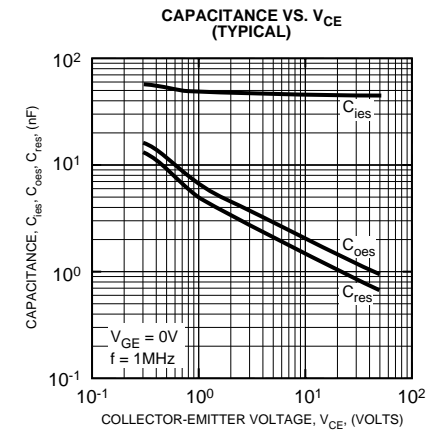
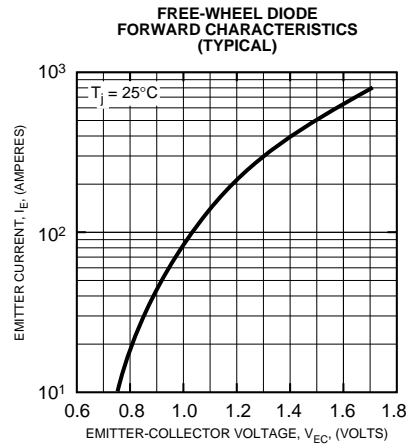
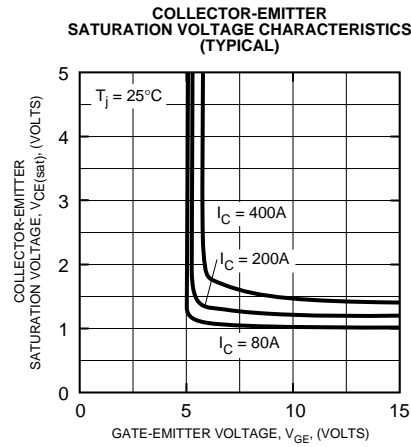
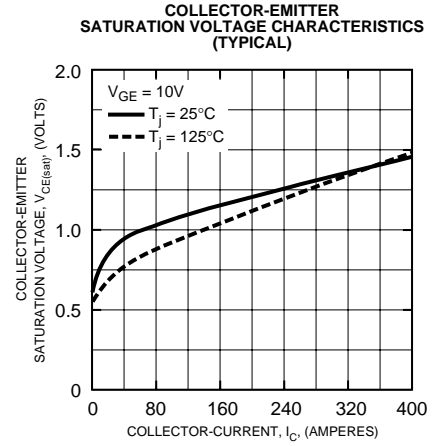
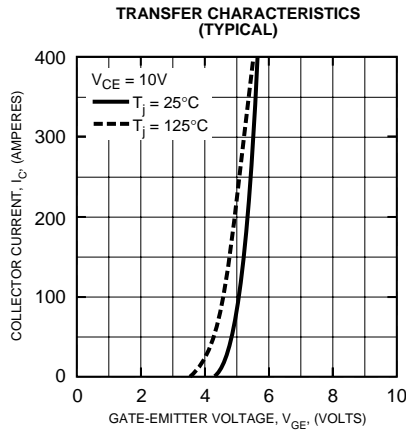
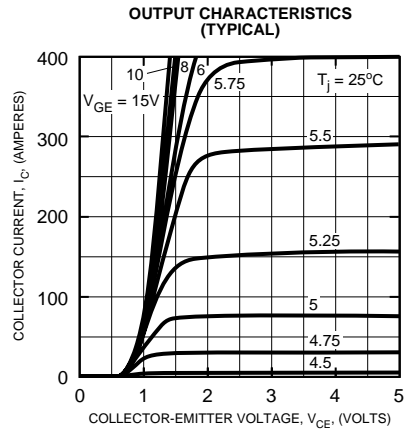
**Thermal and Mechanical Characteristics,  $T_j = 25\text{ °C}$  unless otherwise specified**

Characteristics	Symbol	Test Conditions	Min.	Typ.	Max.	Units
Thermal Resistance, Junction to Case	$R_{th(j-c)Q}$	Per IGBT 1/6 Module	–	–	0.21	°C/W
Thermal Resistance, Junction to Case	$R_{th(j-c)R}$	Per Free-Wheel Diode 1/6 Module	–	–	0.47	°C/W
Contact Thermal Resistance	$R_{th(c-f)}$	Per 1/6 Module, Thermal Grease Applied	–	0.09	–	°C/W

\* Pulse width and repetition rate should be such that the device junction temperature ( $T_j$ ) does not exceed  $T_{j(max)}$  rating.

\*\*Represents characteristics of the anti-parallel, emitter-to-collector free-wheel diode (FWDi).

**CM200TU-5F**  
**Trench Gate Design Six IGBTMOD™**  
 200 Amperes/250 Volts



**CM200TU-5F**  
**Trench Gate Design Six IGBTMOD™**  
 200 Amperes/250 Volts

