

4

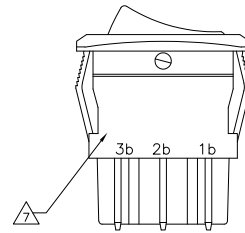
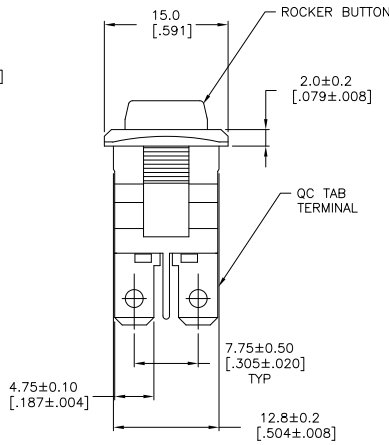
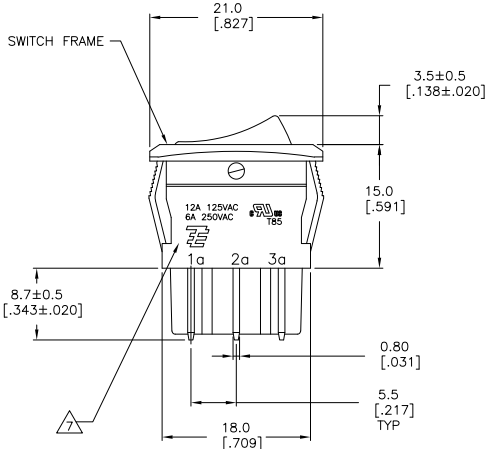
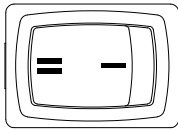
3

2

1

THIS DRAWING IS UNPUBLISHED. RELEASED FOR PUBLICATION BY TYCO ELECTRONICS CORPORATION. ALL RIGHTS RESERVED.

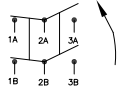
LOC	DIST	REVISIONS		
AD	00	F	LNK	DATE
		A	ECO-07-019301	23AUG07 MB DR



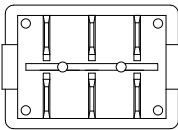
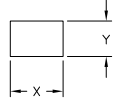
SWITCH FUNCTION D1  
CIRCUIT DIAGRAM



SWITCH FUNCTION D2  
CIRCUIT DIAGRAM



PANEL CUT OUT



1977069-2 SHOWN

2.00-4.00 [.079-.158]	19.8-0.1 [.780-.004]	13.0+0.1 [.512+.004]
1.25-2.00 [.049-.079]	19.4-0.1 [.764-.004]	13.0+0.1 [.512+.004]
0.75-1.25 [.030-.049]	19.2-0.1 [.756-.004]	13.0+0.1 [.512+.004]
PANEL THICKNESS		X Y

THIS DRAWING IS A CONTROLLED DOCUMENT.		DRW M. BINNER 03APR2007	Tyco Electronics Corporation Harrisburg, Pa 17105-3608	
DIMENSIONS: mm [INCHES]		CHK D. ROHDE	NAME	
TOLERANCES UNLESS OTHERWISE SPECIFIED:		APP -	PRODUCT SPEC	
0 PLG	± .-	NOT APPLICABLE		
1 PLG	± 0.30 (012)	APPLICATION SPEC		
2 PLG	± 0.05 (002)	NOT APPLICABLE		
3 PLG	± .-	MATERIAL		
4 PLG	± .-	FINISH		
MATERIAL		WEIGHT		RESTRICTED TO
FINISH		CUSTOMER DRAWING		SCALE 3:1 SHEET 1 OF 3 REV A

AMP 1471-9 REV 31MM2000

1977069

A

4

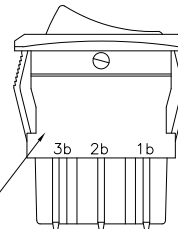
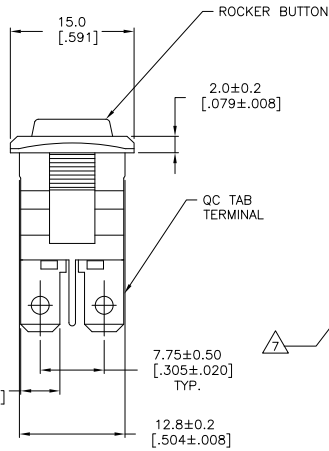
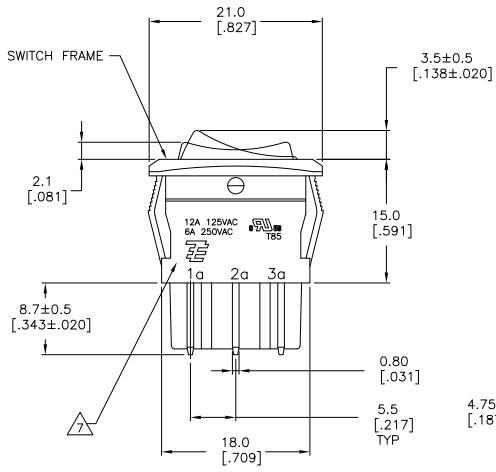
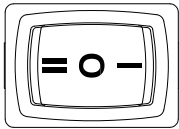
3

2

1

THIS DRAWING IS UNPUBLISHED. RELEASED FOR PUBLICATION  
 BY TYCO ELECTRONICS CORPORATION. ALL RIGHTS RESERVED.

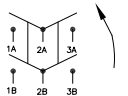
LOC	DIST	REVISIONS			
F	LN	DESCRIPTION	DATE	BY	APP
AD	00	SEE SHEET 1	-	-	-



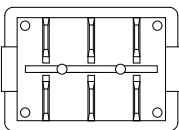
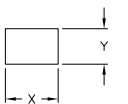
SWITCH FUNCTION D3  
CIRCUIT DIAGRAM



SWITCH FUNCTION D4  
CIRCUIT DIAGRAM



PANEL CUT OUT



1-1977069-1 SHOWN

2.00-4.00 [.079-.158]	19.8-0.1 [.780-.004]	13.0+0.1 [.512+.004]
1.25-2.00 [.049-.079]	19.4-0.1 [.764-.004]	13.0+0.1 [.512+.004]
0.75-1.25 [.030-.049]	19.2-0.1 [.756-.004]	13.0+0.1 [.512+.004]
PANEL THICKNESS		X Y

THIS DRAWING IS A CONTROLLED DOCUMENT.		DRW	03MR2007	Tyco Electronics Corporation	
DIMENSIONS:		CHK	D. ROHDE	Harrisburg, Pa 17105-3608	
TOLERANCES UNLESS OTHERWISE SPECIFIED:		APP	-	NAME	
0 PLG	±	PRODUCT SPEC	-	POWER ROCKER SWITCH, 13.0mm X 19.2mm	
1 PLG	± 0.35 (012)	APPLICATION SPEC	-	PANEL CUT-OUT SIZE, DOUBLE POLE, DOUBLE THROW,	
2 PLG	± 0.05 (002)	NOT APPLICABLE	-	SIX TERMINALS, NON-ILLUMINATED	
3 PLG	±	NOT APPLICABLE	-	SIZE	RESTRICTED TO
4 PLG	±	NOT APPLICABLE	-	A2 00779 C=1977069	-
ANGLES	±	NOT APPLICABLE	-	SCALE	3:1
FINISH	±	NOT APPLICABLE	-	SHEET	2 OF 3
MATERIAL	±	NOT APPLICABLE	-	REV	A
FINISH	±	NOT APPLICABLE	-	CUSTOMER DRAWING	

AMP 1471-9 REV 31MMR2000

1977069

A

4

3

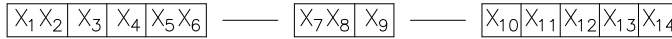
2

1

THIS DRAWING IS UNPUBLISHED. RELEASED FOR PUBLICATION.  
 © COPYRIGHT BY TYCO ELECTRONICS CORPORATION. ALL RIGHTS RESERVED.

LOC	DIST	REVISIONS		
F	LNK	DESCRIPTION	DATE	BY
AD	00	SEE SHEET 1	-	-

LEGACY PART NUMBER



SWITCH TYPE: X1X2 = PR - POWER ROCKER  
 SECONDARY ROCKER COLOR: X12 = Ø - NOT APPLICABLE

NOMINAL PANEL CUT OUT SIZE: X3 = A - 13.0x19.2[.512x.756]

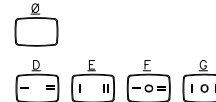
NUMBER OF POLES: X4 = D - DOUBLE

SWITCH FUNCTION: X5X6 =  
 D1: ON-ON, WITH OPAQUE, SINGLE COLOR ROCKER BUTTON  
 D2: ON-(ON), WITH OPAQUE, SINGLE COLOR ROCKER BUTTON  
 D3: ON-OFF-ON, WITH OPAQUE, SINGLE COLOR ROCKER BUTTON  
 D4: ON-OFF-(ON), WITH OPAQUE, SINGLE COLOR ROCKER BUTTON

CURRENT RATING: X7X8 = 12 - A

LEGEND TEXT PATTERN: X13 =

TERMINAL TYPE: X9 = E - QC TAB



FRAME COLOR: X10 =  
 B - BLACK  
 W - WHITE

LEGEND TEXT COLOR: X14 =

ROCKER COLOR: X11 =  
 B - BLACK  
 G - GREEN  
 R - RED  
 W - WHITE

Ø - NOT APPLICABLE  
 G - GREEN  
 R - RED  
 B - BLACK  
 W - WHITE

- 1 MATERIALS:  
 ROCKER BUTTON & HOUSING FRAME: NYLON 66, UL 94 V-2.  
 TERMINAL, ACTIVE CONTACTOR: COPPER ALLOY PER ASTM B152/B152M  
 PLUNGER: BRASS PER ASTM B036  
 SPRING: STEEL WIRE PER ASTM A228/A228M

6 12A@125VAC/6A@250VAC

7 ELECTRICAL RATINGS, APPROVED AGENCY LOGOS, TERMINAL IDENTIFICATION NUMBERS, AND THE TE LOGO MOLDED APPROXIMATELY AS SHOWN ON THE SIDES OF THE SWITCH HOUSING.

2 FINISH:  
 PLUNGER: 1.02µm[.000040]MIN NICKEL

8. COMPONENT RECOGNIZED TO US & CANADIAN STANDARDS, UL FILE NO. E46765.

9. ROHS 2002/95/EC COMPLIANT.

3. ELECTRICAL SPECIFICATIONS:  
 CURRENT AND VOLTAGE: 6  
 CONTACT RESISTANCE: (INITIAL): <100mΩ  
 DIELECTRIC STRENGTH (INITIAL): >1000 VAC, 1 MINUTE  
 INSULATION RESISTANCE (INITIAL): >100MΩ (500 VDC BETWEEN OPEN CONTACTS)  
 ELECTRICAL LIFE ENDURANCE: >6000 OPERATIONS, VOLTAGE DROP: <100mV  
 TEMPERATURE RISE AT TERMINALS: <30°C, 6000 OPERATIONS  
 (AMBIENT CONDITIONS: 25±2°C AND 65±5%RH)

4. MECHANICAL SPECIFICATIONS:  
 ACTUATING FORCE: 400g MIN, 1400g MAX  
 OPERATING LIFE ENDURANCE: >100,000 OPERATIONS  
 TERMINAL RETENTION FORCE: >6.8kg- QC TAB

5. ENVIRONMENTAL SPECIFICATIONS:  
 AMBIENT TEMPERATURE: -20°C TO +85°C  
 HUMIDITY: MAX 85%  
 SALT SPRAY: NO REMARKABLE RUST ON METAL PARTS  
 (5% SALT / 35°C, 24HRS)  
 SHOCK: NO MECHANICAL DEFECT OR DAMAGE  
 (500G 11MSEC / X,Y,Z, 3 TIMES)

2	PRADD4-12F-BB0GW	1-1977069-2
2	PRADD4-12F-BB0FW	1-1977069-1
2	PRADD4-12F-BB000	1-1977069-0
1	PRADD2-12F-BB0EW	1977069-9
1	PRADD2-12F-BB0DW	1977069-8
1	PRADD2-12F-BB000	1977069-7
2	PRADD3-12F-BB0GW	1977069-6
2	PRADD3-12F-BB0FW	1977069-5
2	PRADD3-12F-BB000	1977069-4
1	PRADD1-12F-BB0EW	1977069-3
1	PRADD1-12F-BB0DW	1977069-2
1	PRADD1-12F-BB000	1977069-1

SHEET REF	LEGACY PART NUMBER	PART NUMBER
-----------	--------------------	-------------

THIS DRAWING IS A CONTROLLED DOCUMENT. DIM M. BINNER 03APR2007

CHK. D. ROHDE

NAME Tyco Electronics Corporation  
 Harrisburg, Pa 17105-3608

PRODUCT SPEC POWER ROCKER SWITCH, 13.0mm X 19.2mm  
 PANEL CUT-OUT SIZE, DOUBLE POLE, DOUBLE THROW,  
 SIX TERMINALS, NON-ILLUMINATED

APPLICATION SPEC NOT APPLICABLE  
 APPLICATION SPEC NOT APPLICABLE

SIZE ONE CODE DRAWING NO. RESTRICTED TO  
 A2 00779 C=1977069

MATERIAL FINISH

CUSTOMER DRAWING SCALE 3:1 SHEET 3 OF 3 REV A