

4

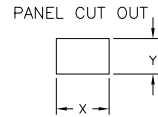
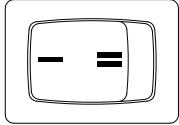
3

2

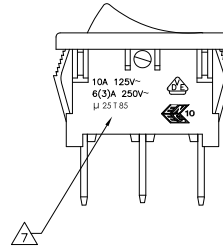
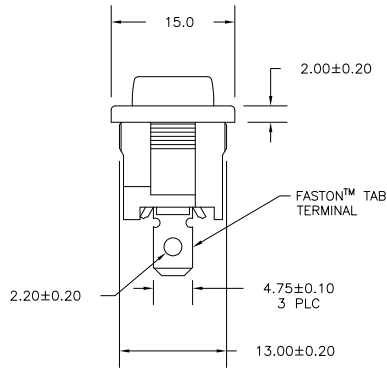
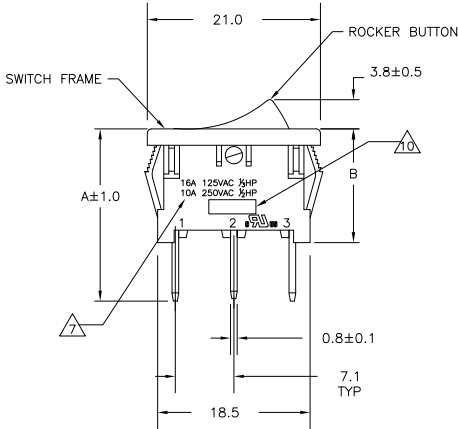
1

THIS DRAWING IS UNPUBLISHED. RELEASED FOR PUBLICATION.
 © COPYRIGHT - By - ALL RIGHTS RESERVED.

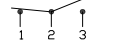
| LOC | DIST | REVISIONS | | |
|-----|------|---------------------------|---------|--------|
| F | LNK | DESCRIPTION | DATE | BY |
| AD | 00 | | | |
| | L1 | REVISED PER ECO-11-004820 | 11MAR11 | RK HMR |



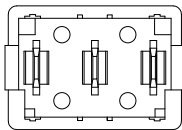
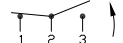
| | | |
|-----------------|----------|----------|
| 2.00-3.00 | 19.8-0.1 | 13.0+0.1 |
| 1.25-2.00 | 19.4-0.1 | 13.0+0.1 |
| 0.75-1.25 | 19.2-0.1 | 13.0+0.1 |
| PANEL THICKNESS | X | Y |



SWITCH FUNCTION D1
CIRCUIT DIAGRAM



SWITCH FUNCTION D2
CIRCUIT DIAGRAM



1571079-5 SHOWN
(TWO ROCKER BUTTON POSITIONS)

| DIMENSIONS: | | TOLERANCES UNLESS OTHERWISE SPECIFIED: | | MATERIAL: | | FINISH: | |
|-------------|---|--|--|-----------|--|---------|--|
| mm | | | | | | | |
| 0 PLC | ± | 0.30 | | | | | |
| 1 PLC | ± | 0.30 | | | | | |
| 2 PLC | ± | 0.05 | | | | | |
| 3 PLC | ± | 0.05 | | | | | |
| 4 PLC | ± | 0.05 | | | | | |
| ANGLES | ± | 0.05 | | | | | |

| | | | | |
|--|-----------|------------------|---|--------------|
| THIS DRAWING IS A CONTROLLED DOCUMENT. | | DRW | M. BINNER | 25FEB2002 |
| CHK | J. MOSIER | NAME | POWER ROCKER SWITCH, 13.0mm X 19.2mm | |
| APP | | PRODUCT SPEC | PANEL CUT-OUT SIZE, SINGLE POLE, DOUBLE-THROW, THREE TERMINALS, NON-ILLUMINATED | |
| APPL | | APPLICATION SPEC | NOT APPLICABLE | |
| WEIGHT | | WEIGHT | NOT APPLICABLE | |
| MATERIAL | | SIZE | A2 | 00779 |
| FINISH | | DATE CODE | C=1571079 | |
| CUSTOMER DRAWING | | SCALE | 3:1 | SHEET 1 of 3 |

4

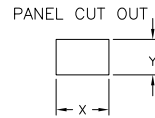
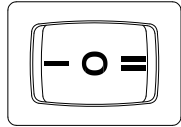
3

2

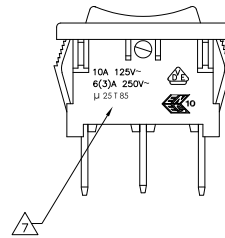
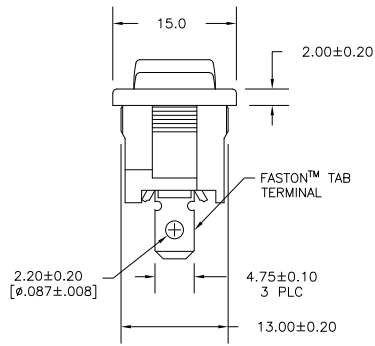
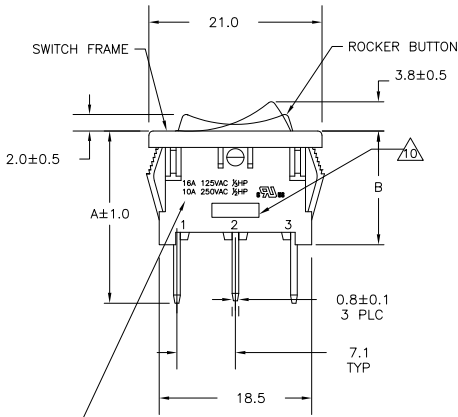
1

THIS DRAWING IS UNPUBLISHED. RELEASED FOR PUBLICATION
 © COPYRIGHT - By - ALL RIGHTS RESERVED.

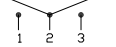
| LOC | DIST | REVISIONS | | | |
|-----|------|-------------|------|-----|-----|
| F | LR | DESCRIPTION | DATE | DRN | APD |
| AD | 00 | SEE SHEET 1 | - | - | - |



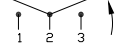
| | | |
|-----------------|----------|----------|
| 2.00-3.00 | 19.8-0.1 | 13.0+0.1 |
| 1.25-2.00 | 19.4-0.1 | 13.0+0.1 |
| 0.75-1.25 | 19.2-0.1 | 13.0+0.1 |
| PANEL THICKNESS | X | Y |



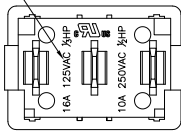
SWITCH FUNCTION D3
CIRCUIT DIAGRAM



SWITCH FUNCTION D4
CIRCUIT DIAGRAM



SWITCH FUNCTION D5
CIRCUIT DIAGRAM



1-1571079-4 SHOWN
(THREE ROCKER BUTTON POSITIONS)

| DIMENSIONS: | | TOLERANCES UNLESS OTHERWISE SPECIFIED: | DRW | 25FEB2002 | TE Connectivity |
|--|---|--|------------------|-----------|---|
| mm | | | M. BINNER | | |
| 0 PLC | ± | 0.30 | CHK | J. MOSIER | |
| 1 PLC | ± | 0.05 | APP | | |
| 2 PLC | ± | 0.05 | PRODUCT SPEC | | POWER ROCKER SWITCH, 13.0mm X 19.2mm |
| 3 PLC | ± | 0.05 | APPLICATION SPEC | | PANEL CUT-OUT SIZE, SINGLE POLE, DOUBLE-THROW, THREE TERMINALS, NON-ILLUMINATED |
| 4 PLC | ± | 0.05 | NOT APPLICABLE | | RESTRICTED TO |
| ANGLES | ± | 0.05 | NOT APPLICABLE | | SIZE ONE CODE DRAWING NO |
| MATERIAL | | | WEIGHT | | A2 00779 C=1571079 |
| FINISH | | | HEIGHT | | |
| THIS DRAWING IS A CONTROLLED DOCUMENT. | | | CUSTOMER DRAWING | | SCALE 3:1 SHEET 2 of 3 REV L1 |

4

3

2

1

THIS DRAWING IS UNPUBLISHED. RELEASED FOR PUBLICATION. ALL RIGHTS RESERVED.

| LOC | | DIST | | REVISIONS | | | |
|-----|-----|-------------|------|-----------|------|---|---|
| F | LNK | DESCRIPTION | DATE | BY | APPD | | |
| - | - | SEE SHEET 1 | - | - | - | - | - |

ALCOSWITCH PART NUMBER

X₁X₂ X₃ X₄ X₅X₆ — X₇X₈ X₉ — X₁₀X₁₁X₁₂X₁₃X₁₄

SWITCH TYPE: X₁X₂ = PR - POWER ROCKER

NOMINAL PANEL CUT OUT SIZE: X₃ = Δ - 13.0x19.2

NUMBER OF POLES: X₄ = S - SINGLE

SWITCH FUNCTION: X₅X₆ = D1 - ON-ON WITH OPAQUE, SINGLE-COLOR ROCKER BUTTON
 D2 - ON-(ON) WITH OPAQUE, SINGLE-COLOR ROCKER BUTTON
 D3 - ON-OFF-ON WITH OPAQUE, SINGLE-COLOR ROCKER BUTTON
 D4 - ON-OFF-(ON) WITH OPAQUE, SINGLE-COLOR ROCKER BUTTON
 D5 - (ON)-OFF-(ON), WITH OPAQUE, SINGLE-COLOR ROCKER BUTTON

CURRENT RATING: X₇X₈ = 16 - Δ

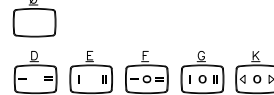
TERMINAL TYPE: X₉ = F - FASTON™ TAB
 L - SOLDER LUG

FRAME COLOR: X₁₀ = B - BLACK
 W - WHITE

ROCKER COLOR: X₁₁ = B - BLACK
 G - GREEN
 R - RED
 W - WHITE

SECONDARY ROCKER COLOR: X₁₂ = Ø - NOT APPLICABLE
 B - BLACK
 G - GREEN
 R - RED
 W - WHITE

LEGEND TEXT PATTERN: X₁₃ = Ø



LEGEND TEXT COLOR: X₁₄ = Ø - NOT APPLICABLE
 G - GREEN
 R - RED
 B - BLACK
 W - WHITE

1 MATERIALS:
 ROCKER BUTTON & HOUSING FRAME: NYLON 66, UL 94 V-2.
 TERMINAL, ACTIVE CONTACTOR: COPPER ALLOY PER ASTM B152/B152M
 PLUNGER: COPPER ALLOY PER ASTM B036
 PHENOLIC, UL94V1(SWITCH FUNCTION D5 ONLY)
 SPRING: STEEL WIRE PER ASTM A228/A228M
 CONTACT: SILVER-TIN OXIDE

2 UL: 16A@125VAC ½HP / 10A@250VAC ½HP
 ENEC: 10A 125V~, 6(3)A 250V~, μ25T85

3 ELECTRICAL RATINGS, APPROVED AGENCY LOGOS, TERMINAL IDENTIFICATION NUMBERS, MOLDED APPROXIMATELY AS SHOWN ON THE SIDE AND/OR BOTTOM SURFACE(S) OF THE SWITCH HOUSING.

4 COMPONENT RECOGNIZED TO US & CANADIAN STANDARDS, UL FILE NO. E46765.

5 COMPONENT RECOGNIZED TO EUROPEAN STANDARDS (ENEC, PENDING VDE). MARKS LICENSE No. 40006757

6 TE CONNECTIVITY LOGO LOCATED APPROXIMATELY AS SHOWN PER TEC 202-36

2 FINISH:
 TERMINAL, ACTIVE CONTACTOR: 1.0μm MIN SILVER
 COPPER ALLOY PLUNGER: 3.0μm MIN NICKEL

3 ELECTRICAL SPECIFICATIONS:
 CURRENT AND VOLTAGE: Δ
 CONTACT RESISTANCE (INITIAL): <100mΩ (5V, 1A DC)
 DIELECTRIC STRENGTH (INITIAL): >1000 VAC, 1 MINUTE
 INSULATION RESISTANCE (INITIAL): >100MΩ MIN (500VDC BETWEEN OPEN CONTACTS)
 INRUSH CURRENT: 50A / 3msec (CAPACITIVE LOAD)
 ELECTRICAL LIFE ENDURANCE: >6000 OPERATIONS, VOLTAGE DROP: <100mV
 TEMPERATURE RISE AT TERMINALS: <30°C, 6000 OPERATIONS (AMBIENT CONDITIONS: 25±2°C AND 65±5%RH)

4 MECHANICAL SPECIFICATIONS:
 ACTUATING FORCE: 150g MIN, 650g MAX
 OPERATING LIFE ENDURANCE: >100,000 OPERATIONS
 TERMINAL RETENTION STRENGTH: >2.5kg - SOLDER LUG
 >6.8kg - FASTON TAB

5 ENVIRONMENTAL SPECIFICATIONS:
 AMBIENT TEMPERATURE: -20°C TO +85°C
 HUMIDITY: MAX 85%
 SALT SPRAY: NO REMARKABLE RUST IN METAL PARTS. (5% SALT / 35°C 24HRS)
 SHOCK: NO MECHANICAL DEFECT OR DAMAGE. (100g / 10MSEC / X,Y,Z 3 TIMES)
 VIBRATION: NO MECHANICAL DEFECT OR DAMAGE. (10-55Hz / 1.5mm / X,Y,Z 2HRS)

| | | | | |
|------|------|---|------------------|-------------|
| 16.5 | 23.5 | 2 | PRASD5-16F-BBOKW | 1-1571079-6 |
| 16.5 | 23.5 | 2 | PRASD4-16F-BBOKW | 1-1571079-5 |
| 16.5 | 23.5 | 2 | PRASD4-16F-BBOFW | 1-1571079-4 |
| 16.5 | 23.5 | 2 | PRASD4-16F-BB000 | 1-1571079-3 |
| 13.8 | 20.9 | 1 | PRASD2-16F-BB0EW | 1-1571079-2 |
| 13.8 | 20.9 | 1 | PRASD2-16F-BB0DW | 1-1571079-1 |
| 13.8 | 20.9 | 1 | PRASD2-16F-BB000 | 1-1571079-0 |
| 16.5 | 23.5 | 2 | PRASD3-16F-BBOKW | 1571079-9 |
| 16.5 | 23.5 | 2 | PRASD3-16F-BBOKW | 1571079-8 |
| 16.5 | 23.5 | 2 | PRASD3-16F-BB000 | 1571079-7 |
| 13.8 | 20.9 | 1 | PRASD1-16F-BB0EW | 1571079-6 |
| 13.8 | 20.9 | 1 | PRASD1-16F-BB0DW | 1571079-5 |
| 13.8 | 20.9 | 1 | PRASD1-16F-BB000 | 1571079-4 |

THIS DRAWING IS A CONTROLLED DOCUMENT. DIM: M. BINIER 25FEB2002. CHK: J. MOSIER. DATE: 25FEB2002. NAME: POWER ROCKER SWITCH, 13.0mm X 19.2mm. PRODUCT SPEC: NOT APPLICABLE. APPLICATION SPEC: NOT APPLICABLE. SIZE: A2. ONE CODE DRAWING NO: 00779. C=1571079. RESTRICTED TO: CUSTOMER DRAWING. SCALE: 3:1. SHEET: 3 of 3. REV: L1.