

4

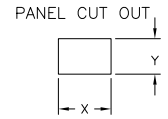
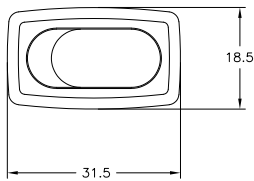
3

2

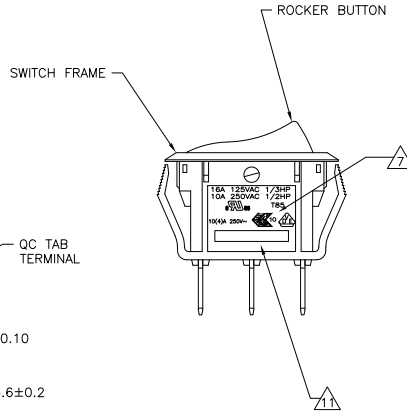
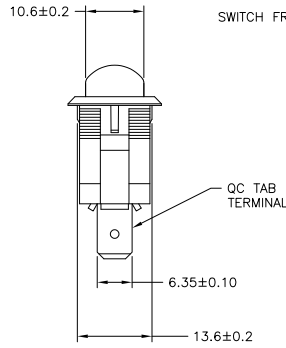
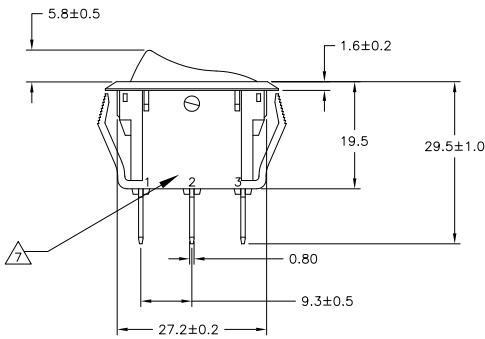
1

THIS DRAWING IS UNPUBLISHED. RELEASED FOR PUBLICATION
 BY TYCO ELECTRONICS CORPORATION. ALL RIGHTS RESERVED.

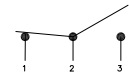
LOC	DIST	REVISIONS		
F	LR	DESCRIPTION	DATE	BY
AD	00			
E1		REVISED PER ECO-10-005254	18MAR10	HMR NE



4.00-5.00	28.0-0.1	13.8+0.1
3.00-4.00	27.8-0.1	13.8+0.1
0.75-3.00	27.6-0.1	13.8+0.1
PANEL THICKNESS	X	Y



SWITCH FUNCTION D1
CIRCUIT DIAGRAM



1571094-1 SHOWN

THIS DRAWING IS A CONTROLLED DOCUMENT.		DRW: 054904	Tyco Electronics Corporation Harrisburg, Pa 17105-3808	
DIMENSIONS: mm		DES: BSY	Tyco Electronics	
TOLERANCES UNLESS OTHERWISE SPECIFIED:		CHK: -	NAME: POWER ROCKER SWITCH, 13.8mm X 27.6mm	
0. PLC	±	APP: J MOSIER	PANEL CUT-OUT SIZE, SINGLE POLE, DOUBLE THROW, THREE TERMINALS, NON-ILLUMINATED	
1. PLC	± 0.30	DATE: -	SIZE: A2	
2. PLC	± 0.05	PRODUCT SPEC: NOT APPLICABLE	CAGE CODE: 00779	
3. PLC	±	APPLICATION SPEC: NOT APPLICABLE	DRAWING NO: 1571094	
4. PLC	±	WEIGHT: -	RESTRICTED TO: -	
ANGLES	±	CUSTOMER DRAWING	SCALE: 2:1 SHEET 1 OF 3 REV E1	

AMP 1471-9 REV 31MM2000

1571094

A

4

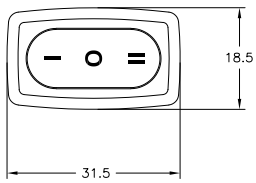
3

2

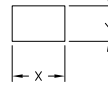
1

THIS DRAWING IS UNPUBLISHED. RELEASED FOR PUBLICATION
 BY TYCO ELECTRONICS CORPORATION. ALL RIGHTS RESERVED.

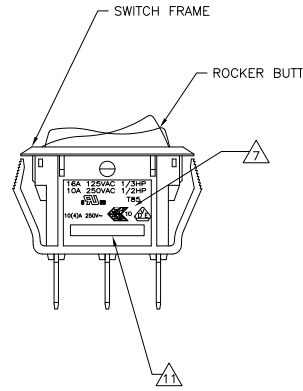
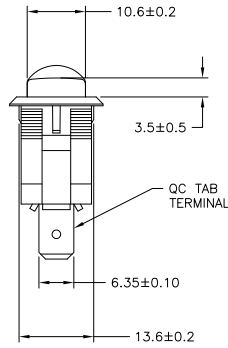
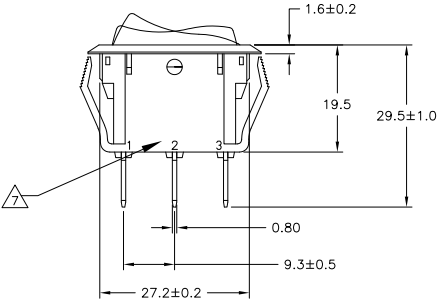
LOC	DIST	REVISIONS		
F	LNK	DESCRIPTION	DATE	BY
-	-	SEE SHEET 1	-	-



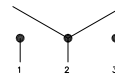
PANEL CUT OUT



4.00-5.00	28.0-0.1	13.8+0.1
3.00-4.00	27.8-0.1	13.8+0.1
0.75-3.00	27.6-0.1	13.8+0.1
PANEL THICKNESS	X	Y



SWITCH FUNCTION D3
CIRCUIT DIAGRAM



1571094-5 SHOWN

DIMENSIONS:		TOLERANCES UNLESS OTHERWISE SPECIFIED:		DWG		Tyco Electronics Corporation	
mm		0. PLG	±	REV	05/04/04	REV	Tyco Electronics Corporation
		1. PLG	± 0.30	CHK	-	NAME	Harrisburg, Pa 17105-3808
		2. PLG	± 0.05	J. MOSIER	-	PRODUCT SPEC	POWER ROCKER SWITCH, 13.8mm X 27.6mm
		3. PLG	±	APP	-	APPLICATION SPEC	PANEL CUT-OUT SIZE, SINGLE POLE, DOUBLE THROW,
		4. PLG	±	NOT APPLICABLE	-	NOT APPLICABLE	THREE TERMINALS, NON-ILLUMINATED
MATERIAL	1	FINISH	2	SIZE	A2	DATE CODE (DRAWING NO)	00779
				RESTRICTED TO	-	SCALE	2:1
				CUSTOMER DRAWING	-	SHEET	2 OF 3
					-	REV	E1

AMP 1471-9 REV 31MM2000

1571094

4

3

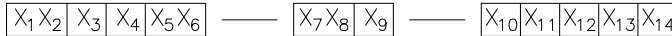
2

1

THIS DRAWING IS UNPUBLISHED. RELEASED FOR PUBLICATION.
 © COPYRIGHT BY TYCO ELECTRONICS CORPORATION. ALL RIGHTS RESERVED.

LOC	DIST	REVISIONS			
F	LNK	DESCRIPTION	DATE	BY	APPD
-	-	SEE SHEET 1	-	-	-

LEGACY PART NUMBER

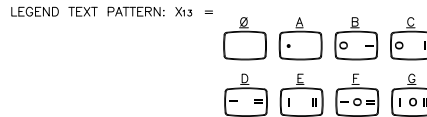


SWITCH TYPE: $X_1X_2 = PR$ - POWER ROCKER
 NOMINAL PANEL CUT OUT SIZE: $X_3 = B$ - 13.8 x 27.6
 NUMBER OF POLES: $X_4 = S$ - SINGLE
 SWITCH FUNCTION: $X_5X_6 = D1$: ON - NONE - ON, WITH OPAQUE, SINGLE-COLOR ROCKER BUTTON
 $D3$: ON - OFF - ON, WITH OPAQUE, SINGLE-COLOR ROCKER BUTTON
 SECONDARY ROCKER COLOR: $X_{12} = \emptyset$ - NOT APPLICABLE

CURRENT RATING: $X_7X_8 = 16 - \Delta$
 TERMINAL TYPE: $X_9 = E$ - QC TAB
 L - SOLDER LUG

FRAME COLOR: $X_{10} = B$ - BLACK
 W - WHITE

ROCKER COLOR: $X_{11} = B$ - BLACK
 G - GREEN
 R - RED
 W - WHITE



LEGEND TEXT COLOR: $X_{14} = \emptyset$ - NOT APPLICABLE
 G - GREEN
 R - RED
 B - BLACK
 W - WHITE

- 1. MATERIALS:
 ROCKER BUTTON & HOUSING: NYLON 66, UL 94 V-2.
 TERMINAL, ACTIVE CONTACTOR: COPPER ALLOY PER ASTM B152/B152M
 PLUNGER: COPPER ALLOY PER ASTM B036
 SPRING: STEEL WIRE PER ASTM A228/A228M
 CONTACT: SILVER TIN OXIDE
- 2. FINISH:
 TERMINAL, ACTIVE CONTACTOR: 1.0µm MIN SILVER
 PLUNGER: 3.0µm MIN NICKEL
- 3. ELECTRICAL SPECIFICATIONS:
 CURRENT & VOLTAGE
 CONTACT RESISTANCE (INITIAL): <50mΩ
 DIELECTRIC STRENGTH (INITIAL): >1000 VAC, 1 MINUTE
 INSULATION RESISTANCE (INITIAL): >100MΩ MIN (500VDC BETWEEN OPEN CONTACTS)
 INRUSH CURRENT: 50A / 3msec (CAPACITIVE LOAD)
 ELECTRICAL LIFE ENDURANCE: >6000 OPERATIONS
 TEMPERATURE RISE AT TERMINALS: <30°C, 6000 OPERATIONS
 (AMBIENT CONDITIONS: 25±2°C AND 65±5%RH)
- 4. MECHANICAL SPECIFICATIONS:
 ACTUATING FORCE: 300g MIN, 700g MAX
 OPERATING LIFE ENDURANCE: >100,000 OPERATIONS
 TERMINAL STRENGTH : >2.5kg- SOLDER LUG
 >10.0kg- QC TAB
- 5. ENVIRONMENTAL SPECIFICATIONS:
 AMBIENT TEMPERATURE: -20°C TO +85°C
 HUMIDITY: MAX 85%
 SALT SPRAY: NO REMAKABLE RUST IN METAL PARTS. (5% SALT / 35°C 24HRS)
 SHOCK: NO MECHANICAL DEFECT OR DAMAGE. (100g / 10MSEC/ X,Y,Z 3 TIMES)
 VIBRATION: NO MECHANICAL DEFECT OR DAMAGE. (10-55Hz / 1.5mm/ X,Y,Z 2HRS)

- 6. UL: 16A@125VAC 1/3HP /10A@250VAC 1/2HP
 ENEC: 10(4)A 250V~
- 7. ELECTRICAL RATINGS, APPROVED AGENCY LOGOS,
 TERMINAL IDENTIFICATION NUMBERS, AND THE TYCO/ ELECTORNICS LOGO
 MOLDED APPROXIMATELY AS SHOWN ON THE SIDES OF THE SWITCH HOUSING.
- 8. COMPONENT-RECOGNIZED TO US & CANADIAN STANDARDS.
 UL FILE NO. E46765
- 9. COMPONENT-RECOGNIZED TO EUROPEAN STANDARDS
 (ENEC & VDE) MARKS LICENSE NO 40020315
- 10. ROHS 2002/95/EC COMPLIANT

11. TYCO ELECTRONICS LOGO LOCATED APPROXIMATELY AS SHOWN

2	PRBSD3-16F-BW000	1571094-7
2	PRBSD3-16F-BB0GW	1571094-6
2	PRBSD3-16F-BB0FW	1571094-5
2	PRBSD3-16F-BB000	1571094-4
1	PRBSD1-16F-BB0EW	1571094-3
1	PRBSD1-16F-BB0DW	1571094-2
1	PRBSD1-16F-BB000	1571094-1

THIS DRAWING IS A CONTROLLED DOCUMENT.		REV 05/04/04	Tyco Electronics Corporation Harrisburg, Pa 17105-3808	
DIMENSIONS: mm	TOLERANCES UNLESS OTHERWISE SPECIFIED:	DESIGNER: J. MOSIER	NAME: J. MOSIER	POWER ROCKER SWITCH, 13.8mm X 27.6mm
0. PLG ± .	1. PLG ± 0.30	PRODUCT SPEC: NOT APPLICABLE	APPLICATION SPEC: NOT APPLICABLE	PANEL CUT-OUT SIZE, SINGLE POLE, DOUBLE THROW, THREE TERMINALS, NON-ILLUMINATED
2. PLG ± 0.05	3. PLG ± .	WEIGHT: -	SIZE: A2	RESTRICTED TO: -
4. PLG ± .	ANGLES ± .	CUSTOMER DRAWING	SCALE: 1:1	SHEET 3 OF 3
MATERIAL:	FINISH:	00779 ©=1571094		