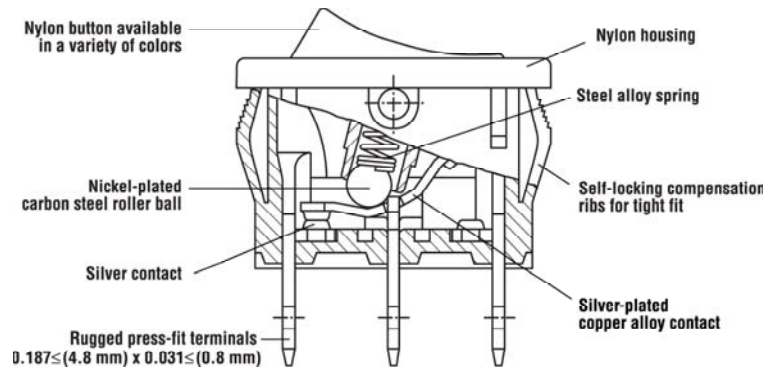


Double-Pole Rocker Switch FR Series



Features

- 12 amp switching in a compact design
- Single-throw and double-throw options
- Choice of actuator and housing color
- Mechanical life: min. 50,000 operations

Electrical Ratings				
Switch Series	EN61058 Rating	UL1054 Rating	Electrical Life at Rated Load	
			According to VDE (Min. Operations)	According to UL (Min. Operations)
FR	16(4)A, 250V~, T125/55	12A, 125/250VAC	10,000	6,000

Electrical Specifications		Material Specifications	
Ratings:	12A, 125/250VAC (cULus) 16A, (4) 250V~, T125/55 (VDE)	Actuator:	Nylon 66 94V-2
Dielectric Strength:	1000VAC for 1 minute	Base:	Nylon 66 94V-2
Insulation Resistance:	100M ohms min at 500VDC	Spring:	Steel Wire
Initial Contact Resistance:	0.030 ohms max	Contacts:	Silver Alloy
Temperature Range:	-20°C to + 125°C (VDE) -20°C to + 55°C (UL)	Movable Arm:	Silver-Plated Copper Alloy
		Terminals:	Tin-Plated Copper Alloy



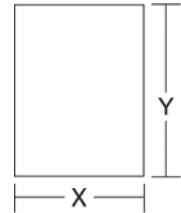
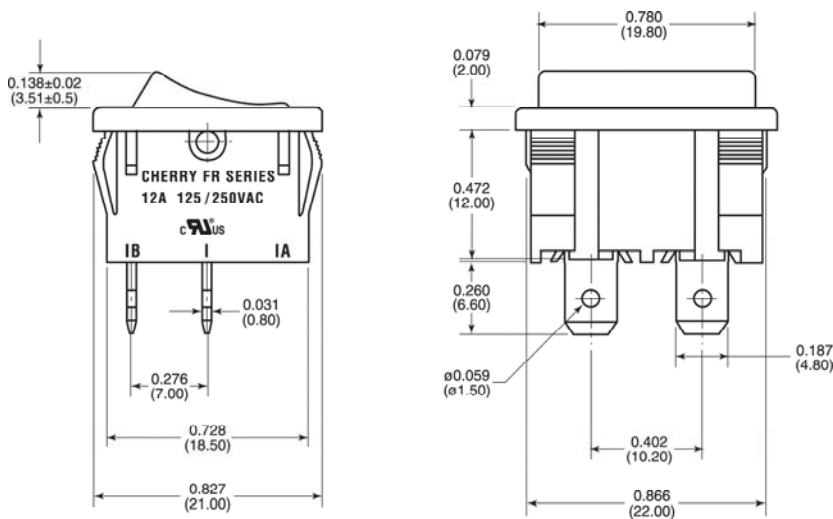
RoHS Compliant
UL File No: E23301

Specifications subject to change without notice.



Double-Pole Rocker Switch

FR Series



Recommended Panel Cut-Out Dimensions

inches (mm) ±0.002 (0.005)

Dim. Z	Dim. X	Dim. Y
0.030 to 0.049 (0.76 to 1.25)	0.752 (19.15)	0.862 (21.90)
0.049 to 0.079 (1.24 to 2.00)	0.760 (19.35)	0.862 (21.90)
0.079 to 0.118 (2.01 to 3.00)	0.775 (19.75)	0.862 (21.90)

Ordering Information

FR	H	2	2	A	2	F	B	B	N	N
Series	Code	Circuitry	Code	Switch Function	Code	Actuator Type	Code	Housing Color	Code	Lighted
	2	Single-Pole	2	On - Off	2	Curve - One Color	B	Black	N	Non-Lighted
	3	Double-Pole	3	On - On			W	White		
							Y	Grey		
Code	Contact Rating		Code	Terminal Type inches (mm)	Code	Actuator Marking	Code	Actuator Color	Code	Body Type
H	12A 125/250VAC (UL, cUL) 16(4)A 250V~ T125 (VDE)		A	0.187 (4.80) Quick-Connect	B	Blank	B	Black	N	No Splashproof Rocker Boot
			U	0.118 (3.0) Solder Tag	C	LO HI	D	Orange		
					D	OFF ON	G	Green		
					E	O I	R	Red		
					F	O -	W	White		
					G	•	Y	Grey		

Examples of Common Part Numbers and Descriptions inches (mm)

Part Number	Circuitry	Switch Function	Terminal Type	Actuator/ Housing Color	Legend Marking
FRH32A2DBBNN		On - Off	0.187 (4.80) Quick-Connect	Black/ Black	
FRH33A2BBBNN		On - On	0.187 (4.80) Quick-Connect	Black/ Black	
FRH32A2BBBNN		On - Off	0.187 (4.80) Quick-Connect	Black/ Black	
FRH32A2FWWNN		On - Off	0.187 (4.80) Quick-Connect	White/ White	
FRH32A2BBWNN		On - Off	0.187 (4.80) Quick-Connect	White/ Black	
FRH32A2FBBNN		On - Off	0.187 (4.80) Quick-Connect	Black/ Black	

Contact

Call, fax or visit our Website for more information.

ZF Electronics Corporation
11200 88th Avenue
Pleasant Prairie, WI 53158

Phone: 262.942.6500
Web: www.cherrycorp.com
Email: cep_sales@zf.com
Fax: 262.942.6566

The manufacturer accepts no liability for errors or non-availability, and reserves the right to change specifications without prior notice.

Technical data relates to product specifications only. Features may differ from those described. Only drawings combined with product specifications shall be deemed binding.

© 2007 ZF Electronics Corporation
Last Updated: 1/20/11

