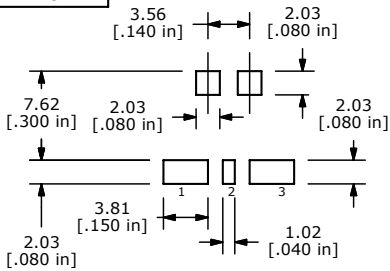
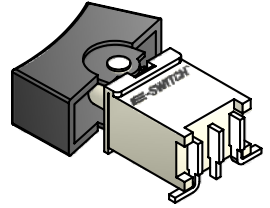
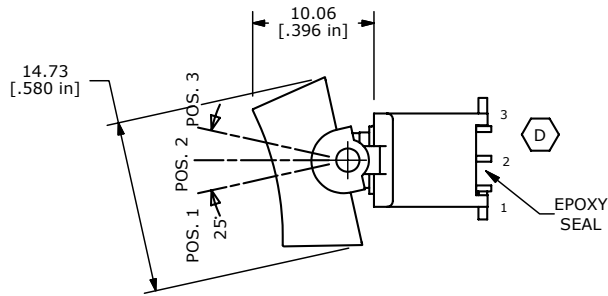


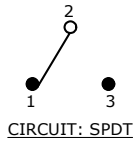
SHEET 1 OF 1



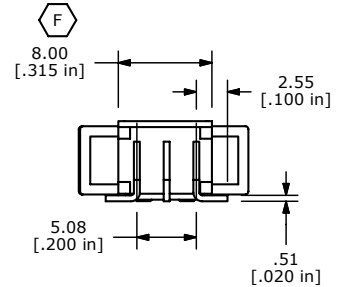
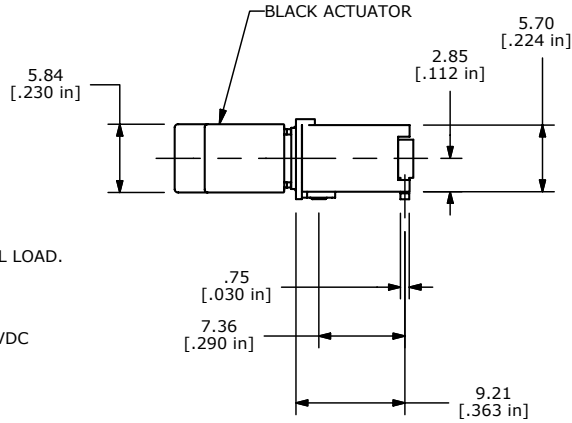
RECOMMENDED P.C.B. LAYOUT



| SWITCH FUNCTION | | |
|-----------------|--------|--------|
| POS. 1 | POS. 2 | POS. 3 |
| | | |
| ON | OFF | ON |
| 2-3 | OPEN | 2-1 |



- NOTES:
1. ALL DIMENSIONS IN MM[INCH].
 2. GENERAL TOLERANCE: X.X=±0.4
X.XX=±0.25
 3. TERM. NOS. FOR REFERENCE ONLY.
 4. ELECTRICAL LIFE: 50,000 MAKE-AND-BREAK CYCLES AT FULL LOAD.
 - ▲ 5. CONTACT MATERIAL: SILVER
 6. CONTACT RATING: 1 AMP @250 VAC
3 AMPS @120 VAC OR 28 VDC
 7. CONTACT RESISTANCE: 20MILLI-OHMS MAX. INITIAL @2-4 VDC
 8. OPERATING TEMPERATURE: -30°C TO 85°C.
 - ▲ 9. TERMINALS TO BE COPLANAR TO WITHIN 0.1[.004]
 10. ▲ DENOTES CRITICAL PARAMETER
 11. 2002/95/EC (ROHS) COMPLIANT
 - ▲ 12. PACKAGING: TAPE AND REEL, 450 PCS. PER REEL



| | | | | |
|-----|--------|--------------------------------|---------|-----|
| F | 18061 | CHANGED BODY WIDTH (FROM 8.25) | 4/17/08 | BLR |
| E | 16079 | ADD PACKAGING NOTE | 6/2/06 | BLR |
| D | 14777 | REVISE TERMINAL NUMBERS | 3/18/05 | BLR |
| C | 13748 | CHANGE ACTUATOR | 2/4/04 | BLR |
| REV | PCR NO | DESCRIPTION | DATE | BY |

THE INFORMATION CONTAINED IN THIS DOCUMENT IS PROPRIETARY TO E-SWITCH AND IS NOT TO BE COPIED OR TRANSFERRED



TITLE 400BWMSP3R2BLKSM6QE

| | | | | |
|-----------|----------------|--------|-------------|-------|
| SCALE 2:1 | DATE 4/17/2008 | DR BLR | DWG T460002 | REV F |
|-----------|----------------|--------|-------------|-------|