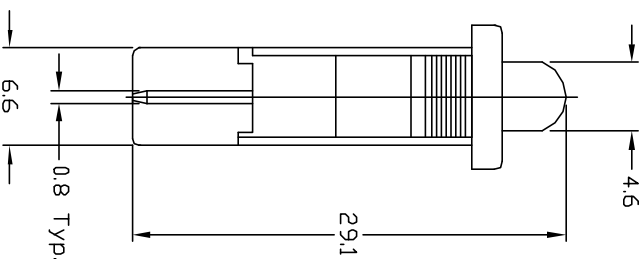
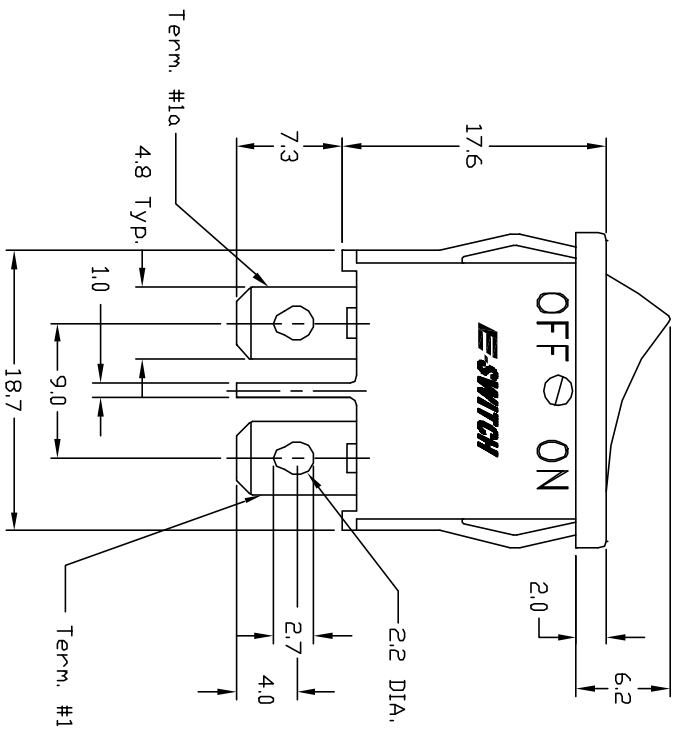
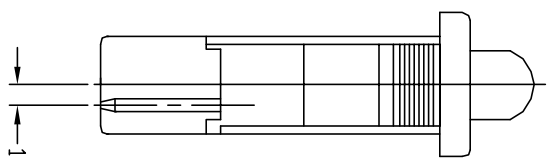


RECOMMEND P.C.B. PANEL MOUNTING

PANEL THICKNESS	X
0.75-1.25	19.2
1.25-2.0	19.4
2.0-3.0	19.6



CIRCUIT: SPST
CONTACT CONFIGURATION

NOTES:

1. ALL DIMENSIONS IN MM
2. GENERAL TOLERANCE: 0.0=±0.4
0.00=±0.25
3. TERM. NOS. FOR REF. ONLY
4. RATING: 4(1)A 250V, 10A 125VAC, 6A 250VAC
5. MATERIAL: Body & Rocker: Nylon 6/6 UL 94 V-2

REV.	ECN NO.	DESCRIPTION	DATE	CHKD
A	10156	RELEASED FOR PRODUCTION		

THE INFORMATION CONTAINED IN THIS DOCUMENT IS PROPRIETARY TO E-SWITCH AND IS NOT TO BE COPIED OR TRANSMITTED

E-SWITCH

R6 A BLK BLK E F

TITLE	SCALE	DATE	DR	DWG	REV
R6 A BLK BLK E F	2:1	3/18/99	MM	M060301	A