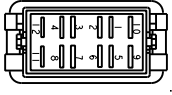
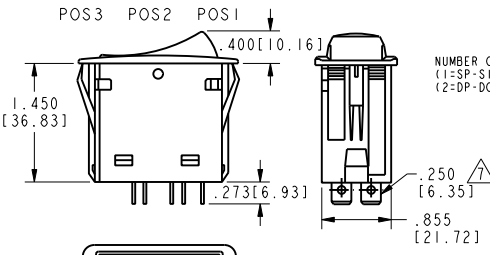
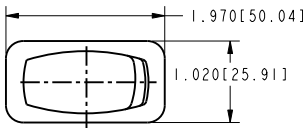


HONEYWELL  
PART NUMBER  
4

REV	DOCUMENT	CHANGED BY	CHECK
A	0016296	LKM 24OCT05	VA



TEST OPENING  
IN  
ACTUAL  
MATERIAL

SWITCH  
MOUNTING HOLE

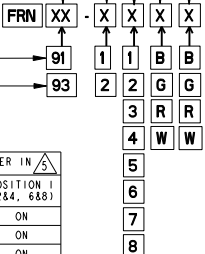
ACTUATOR COLOR (B=BLACK, G=GRAY, R=RED, W=WHITE)  
CIRCUITRY (SEE TABLE)

NUMBER OF POLES  
(1=SP-SINGLE POLE, USES TERMINAL 1-2-4)  
(2=DP-DOUBLE POLE, USES TERMINALS 1-2-4 AND 5-6-8)

TERMINAL STYLE

.250 [6.35] WIDE QUICK  
CONNECT TABS

.187 [4.76] WIDE QUICK  
CONNECT TABS



CIRCUIT MADE WITH ROCKER IN		
POSITION 3 (182, 586)	POSITION 2	POSITION 1 (284, 688)
1	ON	OFF
2	OFF	NONE
3	ON	NONE
4	(OFF)	NONE
5	(ON)	OFF
6	OFF	NONE
7	(ON)	OFF
8	(ON)	NONE

ELECTRICAL RATING & APPROVALS  
FOR .250 WIDE TABS: 20A, 12V  
FOR .187 WIDE TABS: 15A, 12V

- NOTES
- OPERATING TEMPERATURE RANGE: -40°F TO +185°F (-40°C TO +85°C)
  - ELECTRICAL LIFE: 50,000 CYCLES MOMENTARY, 100,000 CYCLES MAINTAINED.
  - MECHANICAL LIFE: 250,000 CYCLES MIN SEE DIAGRAM FOR CATALOGING SCHEME
  - PARENTHESIS DENOTE MOMENTARY ACTION
  - SEALED TO IP67
  - TERMINAL WIDTH AND ELECTRICAL RATING DEPENDENT ON STYLE SELECTED

DESIGN UNITS: INCH

TOLERANCES UNLESS NOTED:

NO PLACE	X	±	0.040
ONE PLACE	.X	±	0.030
TWO PLACE	.XX	±	0.015
THREE PLACE	.XXX	±	0.015
FOUR PLACE	.XXXX	±	.0005
ANGLES	X	±	2

DRAWN CR 13 JUN 05  
CHECK RJ 13 JUN 05

THIS DRAWING COVERS A PROPRIETARY ITEM AND IS THE PROPERTY OF HONEYWELL. THIS DRAWING IS NOT TO BE COPIED OR USED WITHOUT THE PERMISSION OF HONEYWELL.

INTERPRET PER ASME Y14.5M-1994 OTHER HONEYWELL ENGINEERING STANDARDS MAY APPLY

**Honeywell**

SWITCH, ROCKER

SIZE	TYPE	DRAWING NAME	REV
B	I	FRN SERIES CHART 1	A
SCALE	NTS	SHEET	1 OF 1

THIRD ANGLE PROJECTION

Pro/ENGINEER 2D